

RFC2 Antibody

Goat Polyclonal

Antigen Affinity Purified

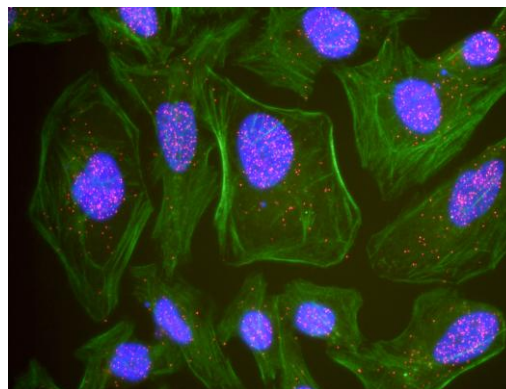
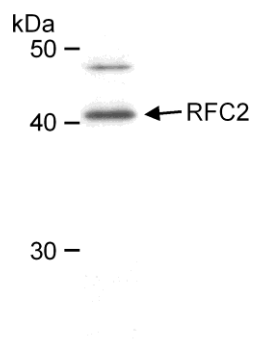
Catalog No. A300-143A

Protein ID NP_852136.1

Gene ID 5982



APPLICATIONS	WB, PLA
REACTIVITY TESTED	Human
PRESUMED REACTIVITY	Based on 100% sequence identity, this antibody is predicted to react with Orangutan, Gorilla and Chimpanzee.
ISOTYPE	IgG
AMOUNT	0.1 ml at 1 mg/ml
STORAGE/SHELF LIFE	2 - 8° C / 1 year from date of receipt
PHYSICAL STATE	Liquid
BUFFER	Tris-citrate/phosphate buffer, pH 7 to 8 containing 0.1% Sodium Azide
ORIGIN	USA
PRODUCTION PROCEDURES	<p>Antibody was affinity purified using an epitope specific to RFC2 immobilized on solid support.</p> <p>The epitope recognized by A300-143A maps to a region between residues 175 and 225 of human Replication Factor C subunit 2 using the numbering given in entry NP_852136.1 (GeneID 5982).</p> <p>Immunoglobulin concentration was determined by extinction coefficient: absorbance at 280 nm of 1.4 equals 1.0 mg of IgG.</p>
APPLICATIONS	<p>Centrifuge tube to remove product from lid. Optimal working dilutions should be determined experimentally by the investigator. Prepare working dilution immediately before use.</p> <p>Western Blot 1:500 - 1:5,000</p> <p>Proximity Ligation Assay 1:1,000 - 1:10,000</p>
ADDITIONAL INFO	<p>http://www.bethyl.com/product/A300-143A</p> <p>Use the link above to view a current list of citations and other product specific information.</p>



Detection of Human RFC2 (aka RFC40) by Western Blot.

Samples: Nuclear extract (50 μ g) from HeLa cells. *Antibody:* Affinity purified goat anti-RFC2 (Cat. No. A300-143A) used at 1 μ g/ml. *Detection:* Chemiluminescence.

This antibody is qualified for the Proximity Ligation Assay (PLA). PLA uses paired antibodies, so please refer to the PLA page of our website for specific imaging obtained by pairing this antibody with other qualified antibodies. The above image shows representative results for PLA using three color fluorescence, including DAPI stained nuclei (blue), phalloidin stained cytoplasmic F-actin (green), and PLA positive signal (red).

MATERIAL SAFETY DATA SHEET

CONTENTS

This product contains Goat immunoglobulin G (IgG) protein in Tris-citrate/phosphate buffer, pH 7 to 8 containing 0.1% Sodium Azide.

INGREDIENT DESCRIPTIONS

HAZARDOUS:

Sodium Azide (NaN₃): Azide forms explosive chemical compounds with lead and copper plumbing. Care must be taken to wash waste down drains with large volumes of water. LD50 oral mouse 27 mg/kg. Wash all affected areas with large volumes of water and if swallowed consult your physician immediately.