

SMC4 Antibody

Rabbit Polyclonal

Antigen Affinity Purified

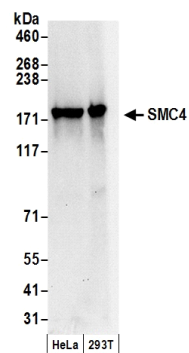
Catalog No. A300-063A-T

Protein ID NP_005487.2

Gene ID 10051



APPLICATIONS	WB, ICC, IF						
REACTIVITY TESTED	Human						
PRESUMED REACTIVITY	Based on 100% sequence identity, this antibody is predicted to react with Mouse, Rat, Dog, Horse, Rabbit, Guinea pig_10141, Panda, Rhesus Monkey, Gorilla, Chimpanzee, White-tufted-ear marmoset, Crab-eating macaque, European domestic ferret, African elephant and Northern white-cheeked gibbon.						
ISOTYPE	IgG						
AMOUNT	20 µl (2 blots)						
STORAGE/SHELF LIFE	2 - 8° C / 1 year from date of receipt						
PHYSICAL STATE	Liquid						
BUFFER	Tris-buffered Saline with 0.1% BSA containing 0.09% Sodium Azide						
ORIGIN	USA						
PRODUCTION PROCEDURES	<p>Antibody was affinity purified using an epitope specific to SMC4 immobilized on solid support.</p> <p>The epitope recognized by A300-063A-T maps to a region between residues 600 and 650 of human Structural Maintenance of Chromosomes 4 using the numbering given in entry NP_005487.2 (GeneID 10051).</p> <p>Immunoglobulin concentration was determined by extinction coefficient: absorbance at 280 nm of 1.4 equals 1.0 mg of IgG.</p>						
APPLICATIONS	<p>Centrifuge tube to remove product from lid. Optimal working dilutions should be determined experimentally by the investigator. Prepare working dilution immediately before use.</p> <table><tr><td>Western Blot</td><td>1:1000</td></tr><tr><td>Immunocytochemistry</td><td>1:50 to 1:200</td></tr><tr><td>Immunofluorescence</td><td>1:50 to 1:200</td></tr></table>	Western Blot	1:1000	Immunocytochemistry	1:50 to 1:200	Immunofluorescence	1:50 to 1:200
Western Blot	1:1000						
Immunocytochemistry	1:50 to 1:200						
Immunofluorescence	1:50 to 1:200						
ADDITIONAL INFO	<p>http://www.bethyl.com/product/A300-063A-T</p> <p>Use the link above to view SDS, a current list of citations, and other product specific information.</p>						



Detection of Human SMC4 by Western Blot. *Samples:* Whole cell lysate (50 μ g) from HeLa and 293T cells prepared using NETN lysis buffer. *Antibody:* Affinity purified rabbit anti-SMC4 antibody A300-063A-T (lot A300-063A-T-2) used at 1:1000. *Detection:* Chemiluminescence with an exposure time of 10 seconds.