

SMC2 Antibody

Rabbit Polyclonal

Antigen Affinity Purified

Protein ID NP_006435.1

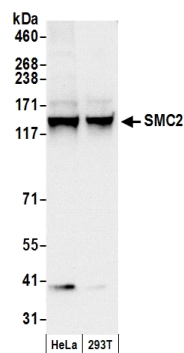
Catalog No. A300-058A-T

Gene ID 10592



APPLICATIONS	WB, IP, ICC, IF, PLA										
REACTIVITY TESTED	Human										
PRESUMED REACTIVITY	Based on 100% sequence identity, this antibody is predicted to react with Orangutan, Rhesus Monkey, Gorilla, Chimpanzee, Crab-eating macaque and Northern white-cheeked gibbon.										
ISOTYPE	IgG										
AMOUNT	20 µl (2 blots)										
STORAGE/SHELF LIFE	2 - 8° C / 1 year from date of receipt										
PHYSICAL STATE	Liquid										
BUFFER	Tris-buffered Saline with 0.1% BSA containing 0.09% Sodium Azide										
ORIGIN	USA										
PRODUCTION PROCEDURES	<p>Antibody was affinity purified using an epitope specific to SMC2 immobilized on solid support.</p> <p>The epitope recognized by A300-058A-T maps to a region between residue 1150 and the C-terminus (residue 1197) of human Structural Maintenance of Chromosomes 2 using the numbering given in entry NP_006435.1 (GeneID 10592).</p> <p>Immunoglobulin concentration was determined by extinction coefficient: absorbance at 280 nm of 1.4 equals 1.0 mg of IgG.</p>										
APPLICATIONS	<p>Centrifuge tube to remove product from lid. Optimal working dilutions should be determined experimentally by the investigator. Prepare working dilution immediately before use.</p> <table><tr><td>Western Blot</td><td>1:1000</td></tr><tr><td>Immunoprecipitation</td><td>The antibody contained within A300-058A-T has been qualified for use in immunoprecipitation; however, we recommend using the alternative formulation of this antibody found as product A300-058A.</td></tr><tr><td>Immunocytochemistry</td><td>1:20 to 1:40</td></tr><tr><td>Immunofluorescence</td><td>1:20 to 1:40</td></tr><tr><td>Proximity Ligation Assay</td><td>The antibody contained within A300-058A-T has been qualified for use in PLA; however, we recommend using the alternative formulation of this antibody found as product A300-058A.</td></tr></table>	Western Blot	1:1000	Immunoprecipitation	The antibody contained within A300-058A-T has been qualified for use in immunoprecipitation; however, we recommend using the alternative formulation of this antibody found as product A300-058A.	Immunocytochemistry	1:20 to 1:40	Immunofluorescence	1:20 to 1:40	Proximity Ligation Assay	The antibody contained within A300-058A-T has been qualified for use in PLA; however, we recommend using the alternative formulation of this antibody found as product A300-058A.
Western Blot	1:1000										
Immunoprecipitation	The antibody contained within A300-058A-T has been qualified for use in immunoprecipitation; however, we recommend using the alternative formulation of this antibody found as product A300-058A.										
Immunocytochemistry	1:20 to 1:40										
Immunofluorescence	1:20 to 1:40										
Proximity Ligation Assay	The antibody contained within A300-058A-T has been qualified for use in PLA; however, we recommend using the alternative formulation of this antibody found as product A300-058A.										
ADDITIONAL INFO	<p>http://www.bethyl.com/product/A300-058A-T</p> <p>Use the link above to view SDS, a current list of citations, and other product specific information.</p>										

SMC2 Antibody: A300-058A-T



Detection of Human SMC2 by Western Blot. *Samples:* Whole cell lysate (50 μ g) from HeLa and 293T cells prepared using NETN lysis buffer. *Antibody:* Affinity purified rabbit anti-SMC2 antibody A300-058A-T (lot A300-058A-T-3) used for WB at 1;1000. *Detection:* Chemiluminescence with an exposure time of 3 seconds.