

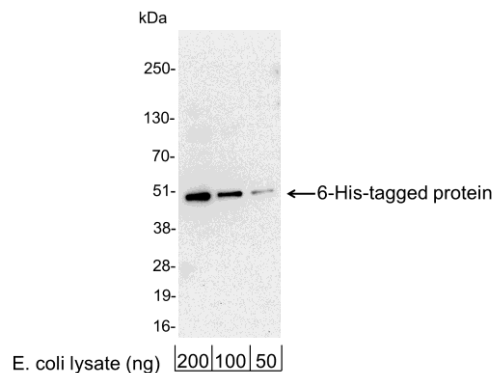
6-His Antibody

Chicken Polyclonal
Antigen Affinity Purified
Catalog No. A190-212A



APPLICATIONS	WB, IP, ICC, ELISA
ISOTYPE	IgG
AMOUNT	1 ml at 1 mg/ml
STORAGE/SHELF LIFE	2 - 8° C / 1 year from date of receipt
PHYSICAL STATE	Liquid
BUFFER	Phosphate Buffered Saline (PBS) containing 0.1% Sodium Azide
ORIGIN	USA
PRODUCTION PROCEDURES	Chickens were immunized with 6-His (HHHHHH) conjugated to KLH. Antibody was isolated by affinity chromatography using the peptide immobilized on solid support. This antibody does not detect all N-terminal 6-His tagged proteins. Antibody concentration was determined by extinction coefficient: absorbance at 280 nm of 1.4 equals 1.0 mg of IgG.
APPLICATIONS	Centrifuge tube to remove product from lid. Optimal working dilutions should be determined experimentally by the investigator. Prepare working dilution immediately before use. Western Blot 1:1,000 - 1:20,000 Immunoprecipitation 1 - 4 µg/mg lysate Immunocytochemistry 1:100 – 1:400 ELISA 1:1,000 - 1:30,000; for coating plates 1:100 - 1:500
APPLICATION NOTES	Not all listed applications have been specifically tested by our laboratory. Validation by Western Blot was performed using ReliaBLOT® Western Blot Gel 4-20%, 10 x 10 cm (Cat. No. WB101-42012G) and related ReliaBLOT® buffers and reagents.
ADDITIONAL INFO	http://www.bethyl.com/product/A190-212A Use the link above to view a current list of citations and other product specific information.

6-His Antibody: A190-212A



Detection of 6-His-tagged Protein by Western Blot. *Samples:* 200, 100, or 50 ng of E. coli whole cell lysate expressing a multi-tag fusion protein. *Antibodies:* Affinity purified, chicken anti-6-His antibody A190-212A used for WB at 0.2 $\mu\text{g}/\text{ml}$ (1:5,000). *Detection:* Chemiluminescence with an exposure time of 30 seconds.

MATERIAL SAFETY DATA SHEET

CONTENTS

This product contains Chicken Whole IgG protein in Phosphate Buffered Saline (PBS) containing 0.1% Sodium Azide.

INGREDIENT DESCRIPTIONS

HAZARDOUS:

Sodium Azide (NaN₃): Azide forms explosive chemical compounds with lead and copper plumbing. Care must be taken to wash waste down drains with large volumes of water. LD50 oral mouse 27 mg/kg. Wash all affected areas with large volumes of water and if swallowed consult your physician immediately.