

# 6-His Antibody

Goat Polyclonal

Conjugate Biotin

Antigen Affinity Purified

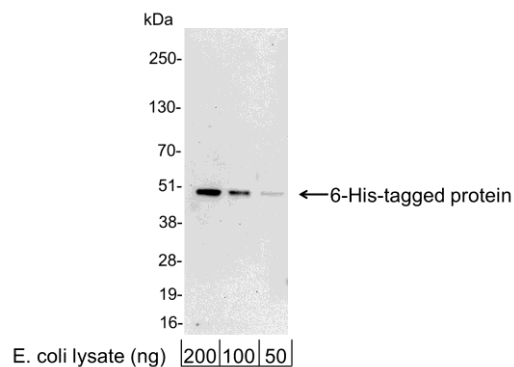
Catalog No. A190-113B



<b>APPLICATIONS</b>	ELISA, WB
<b>ISOTYPE</b>	IgG
<b>AMOUNT</b>	0.1 ml at 1 mg/ml
<b>STORAGE/SHELF LIFE</b>	2 - 8° C / 1 year from date of receipt
<b>PHYSICAL STATE</b>	Liquid
<b>BUFFER</b>	Phosphate Buffered Saline (PBS) containing 0.2% BSA and 0.09% Sodium Azide
<b>ORIGIN</b>	USA
<b>PRODUCTION PROCEDURES</b>	Goats were immunized with 6-His (HHHHHH) conjugated to KLH. Antibody was isolated by affinity chromatography using the peptide immobilized on solid support and conjugated to biotin. This antibody does not detect all N-terminal 6-His tagged proteins.  Antibody concentration was determined by extinction coefficient prior to conjugation: absorbance at 280 nm of 1.4 equals 1.0 mg of IgG.
<b>APPLICATIONS</b>	Centrifuge tube to remove product from lid. Optimal working dilutions should be determined experimentally by the investigator. Prepare working dilution immediately before use.  Western Blot                      1:10,000 - 1:100,000  ELISA                                      1:10,000 - 1:100,000
<b>APPLICATION NOTES</b>	Validation by Western Blot was performed using ReliaBLOT® Western Blot Gel 4-20%, 10 x 10 cm (Cat. No. WB101-42012G) and related ReliaBLOT® buffers and reagents.
<b>ADDITIONAL INFO</b>	<a href="http://www.bethyl.com/product/A190-113B">http://www.bethyl.com/product/A190-113B</a>  Use the link above to view a current list of citations and other product specific information.

## 6-His Antibody: A190-113B

---



**Detection of 6-His-tagged Protein by Western Blot.** *Samples:* 200, 100, or 50 ng of *E. coli* whole cell lysate expressing a multi-tag fusion protein. *Antibodies:* Affinity-purified, biotin-conjugated, goat anti-6-His antibody A190-113B used for WB at 0.04 µg/ml (1:25,000). *Detection:* Streptavidin-HRP (0.1 µg/ml) and chemiluminescence with an exposure time of 10 seconds.

### MATERIAL SAFETY DATA SHEET

**CONTENTS** This product contains Biotin conjugated Goat Whole IgG protein in Phosphate Buffered Saline (PBS) containing 0.2% BSA and 0.09% Sodium Azide.

**INGREDIENT DESCRIPTIONS** **NON-HAZARDOUS:**

Biotin – Not a hazardous material.

Bovine Serum Albumin (BSA) – This product was derived from animals free of infectious or contagious diseases of U.S. Origin. No known toxicity for this biological material.

**HAZARDOUS:**

Sodium Azide (NaN<sub>3</sub>): Azide forms explosive chemical compounds with lead and copper plumbing. Care must be taken to wash waste down drains with large volumes of water. LD50 oral mouse 27 mg/kg. Wash all affected areas with large volumes of water and if swallowed consult your physician immediately.