

ARG52923 anti-Cyclin D1 antibody [SP4]

Package: 250 µl, 125 µl
Store at: -20°C

Summary

Product Description	Rabbit Monoclonal antibody [SP4] recognizes Cyclin D1
Tested Reactivity	Hu, Ms, Rat
Predict Reactivity	Dog, Rat
Tested Application	ICC/IF, IHC-P, WB
Host	Rabbit
Clonality	Monoclonal
Clone	SP4
Isotype	IgG
Target Name	Cyclin D1
Antigen Species	Human
Immunogen	Synthetic peptide from C-terminus of human cyclin D1.
Conjugation	Un-conjugated
Alternate Names	B-cell lymphoma 1 protein; PRAD1; U21B31; D11S287E; BCL-1; G1/S-specific cyclin-D1; BCL-1 oncogene; BCL1; PRAD1 oncogene

Application Instructions

Application table	Application	Dilution
	ICC/IF	Assay-Dependent
	IHC-P	1:100
	WB	1:25 - 1:1000
Application Note	IHC-P: Antigen Retrieval: Boil tissue section in 10mM citrate buffer, pH 6.0 for 10 min followed by cooling at RT for 20 min. Incubation Time: 30 min at RT. * The dilutions indicate recommended starting dilutions and the optimal dilutions or concentrations should be determined by the scientist.	
Positive Control	Mantle Cell Lymphoma, Tonsil, MCF-7	
Calculated Mw	36 kDa	

Properties

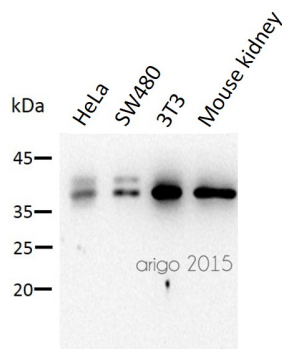
Form	Liquid
Buffer	Tissue culture supernatant in TBS (pH 7.5), 1% BSA and < 0.1% Sodium azide
Preservative	< 0.1% Sodium azide

Stabilizer	1% BSA
Storage instruction	For continuous use, store undiluted antibody at 2-8°C for up to a week. For long-term storage, aliquot and store at -20°C or below. Storage in frost free freezers is not recommended. Avoid repeated freeze/thaw cycles. Suggest spin the vial prior to opening. The antibody solution should be gently mixed before use.
Note	For laboratory research only, not for drug, diagnostic or other use.

Bioinformation

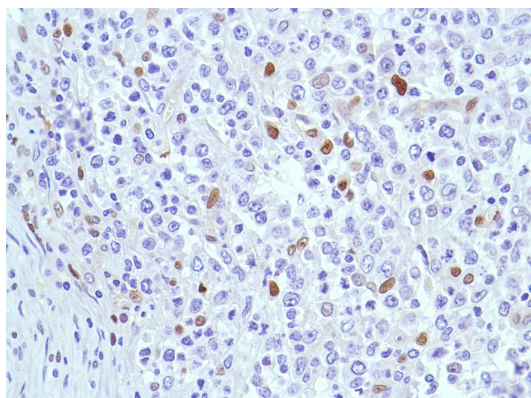
Background	Cyclin D1 or PRAD-1 or bcl-1 is one of the key cell cycle regulators, and functions in association with cdk4 and / or cdk6 by phosphorylating the Rb protein. It is a putative proto-oncogene overexpressed in a wide variety of human neoplasms including mantle cell lymphomas (MCL).
Highlight	Related products: Cyclin D1 antibodies ; Anti-Rabbit IgG secondary antibodies ;
Resrarch Area	Cancer antibody; Cell Biology and Cellular Response antibody; Gene Regulation antibody
Cellular Localization	Nucleus

Images



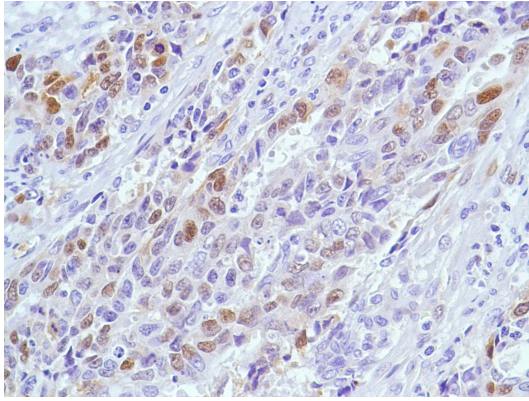
ARG52923 anti-Cyclin D1 antibody [SP4] WB image

Western blot: 30 µg of HeLa, SW480, 3T3, and Mouse kidney lysates stained with ARG52923 anti-Cyclin D1 antibody [SP4] at 1:500 dilution.



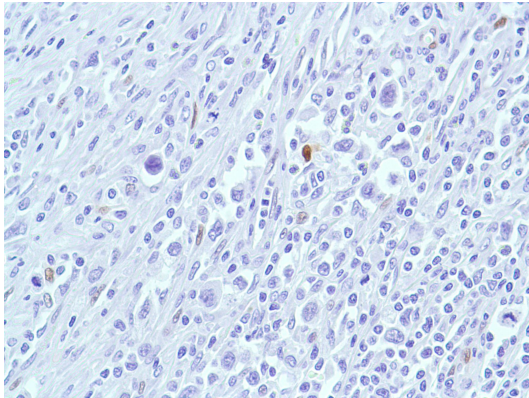
ARG52923 anti-Cyclin D1 antibody [SP4] IHC-P image

Immunohistochemistry: Human B Cell Lymphoma stained with Cyclin D1 antibody [SP4] (ARG52923)



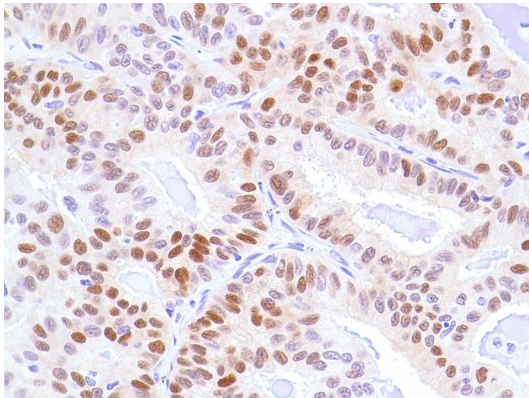
ARG52923 anti-Cyclin D1 antibody [SP4] IHC-P image

Immunohistochemistry: Human Endometrial Adenocarcinoma stained with Cyclin D1 antibody [SP4] (ARG52923)



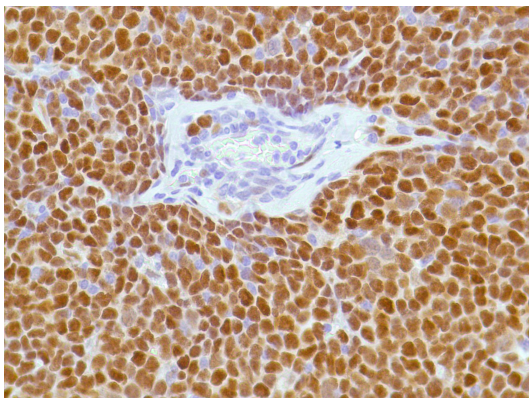
ARG52923 anti-Cyclin D1 antibody [SP4] IHC-P image

Immunohistochemistry: Human HK Lymphoma stained with Cyclin D1 antibody [SP4] (ARG52923)



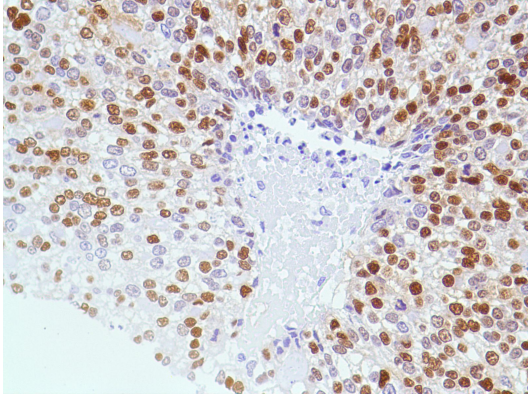
ARG52923 anti-Cyclin D1 antibody [SP4] IHC-P image

Immunohistochemistry: Human Lung Adenocarcinoma stained with Cyclin D1 antibody [SP4] (ARG52923)



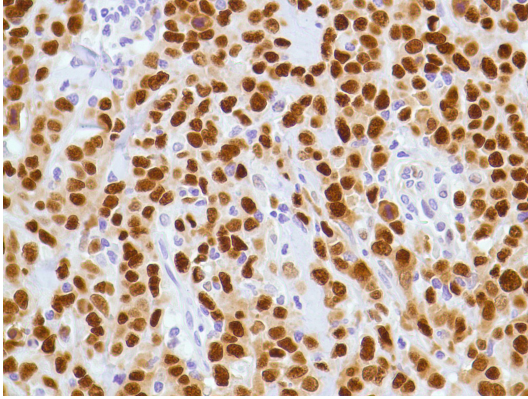
ARG52923 anti-Cyclin D1 antibody [SP4] IHC-P image

Immunohistochemistry: Human Mantle Cell Lymphoma stained with Cyclin D1 antibody [SP4] (ARG52923)



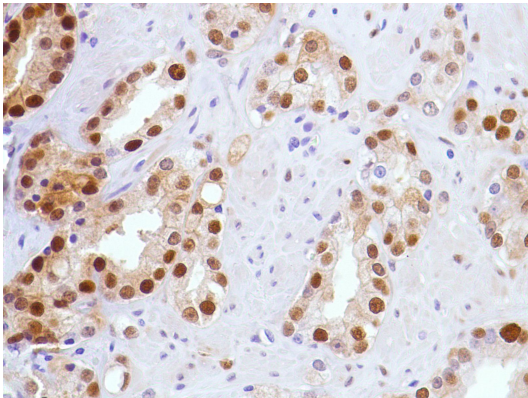
ARG52923 anti-Cyclin D1 antibody [SP4] IHC-P image

Immunohistochemistry: Human Ovarian Adenocarcinoma stained with Cyclin D1 antibody [SP4] (ARG52923)



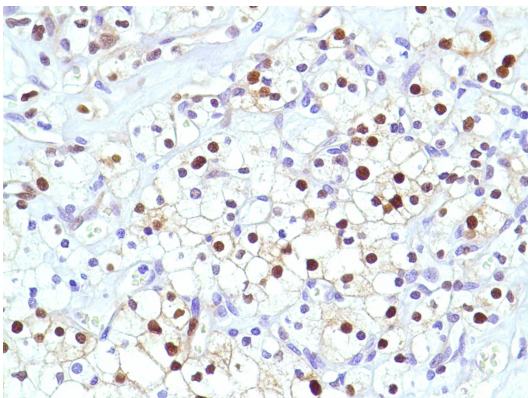
ARG52923 anti-Cyclin D1 antibody [SP4] IHC-P image

Immunohistochemistry: Human Pancreatic Adenocarcinoma stained with Cyclin D1 antibody [SP4] (ARG52923)



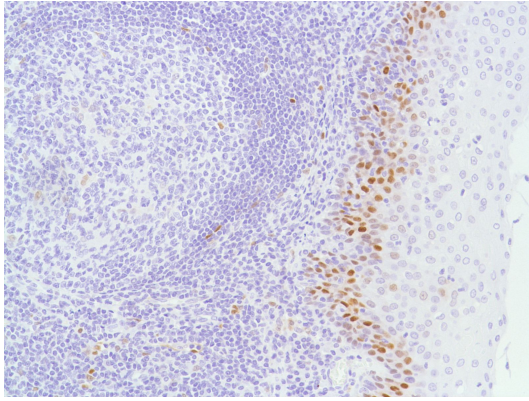
ARG52923 anti-Cyclin D1 antibody [SP4] IHC-P image

Immunohistochemistry: Human Prostate Adenocarcinoma stained with Cyclin D1 antibody [SP4] (ARG52923)



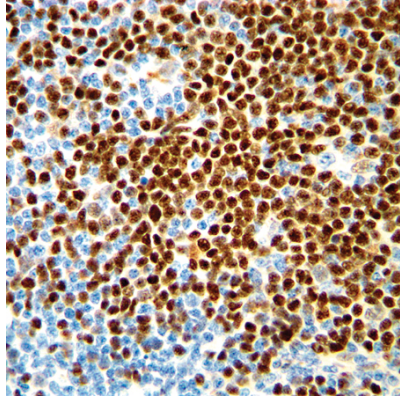
ARG52923 anti-Cyclin D1 antibody [SP4] IHC-P image

Immunohistochemistry: Human Renal Cell Carcinoma stained with Cyclin D1 antibody [SP4] (ARG52923)



ARG52923 anti-Cyclin D1 antibody [SP4] IHC-P image

Immunohistochemistry: Human Tonsil stained with Cyclin D1 antibody [SP4] (ARG52923)



ARG52923 anti-Cyclin D1 antibody [SP4] IHC-P image

Immunohistochemistry: Human Mantle Cell Lymphoma stained with Cyclin D1 antibody [SP4] (ARG52923)
