

## ARG30321JP Autophagy Antibody Panel

Package: 1 kit

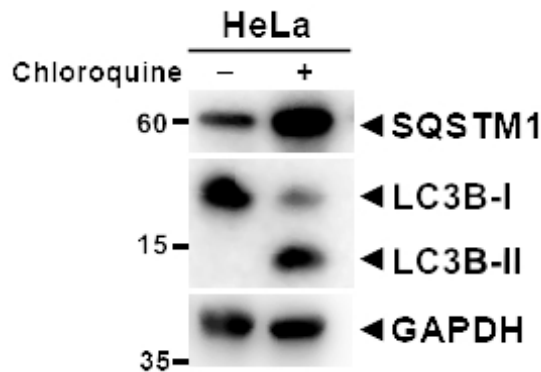
### Component

Cat. No.	Component Name	Host clonality	Reactivity	Application	Package
ARG55040	anti-SQSTM1 / p62 antibody	Rabbit pAb	Hu, Ms	ICC/IF, IHC-P, IP, WB	20 µl
ARG55799	anti-LC3B antibody	Rabbit pAb	Hu, Ms, Rat	ICC/IF, IHC-P, WB	20 µl
ARG65614	anti-Beclin 1 antibody	Rabbit pAb	Hu, Ms, Rat	IHC-P, WB	20 µl

### Properties

**Note** For laboratory research only, not for drug, diagnostic or other use.

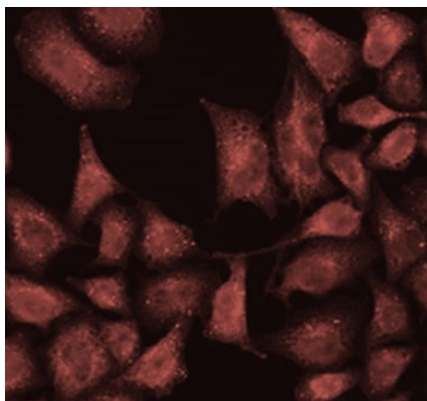
### Images



ARG55040 anti-SQSTM1 / p62 antibody WB image

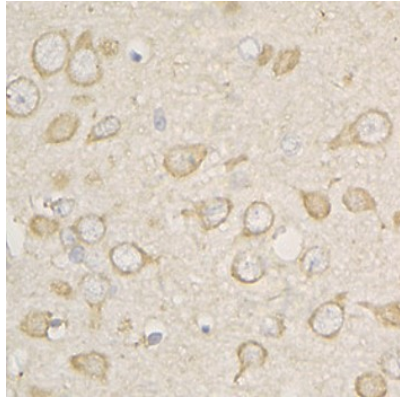
Western blot: HeLa cells untreated or treated with Chloroquine. 20 µg of cell lysates stained with ARG55040 anti-SQSTM1 / p62 antibody and [ARG55799](#) anti-LC3B antibody at 1:1000 dilution.

An anti-GAPDH antibody used as a positive control.



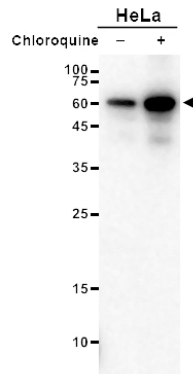
ARG55040 anti-SQSTM1 / p62 antibody ICC/IF image

Immunofluorescence: U2OS cells stained with ARG55040 anti-SQSTM1 / p62 antibody at 1:100 dilution.



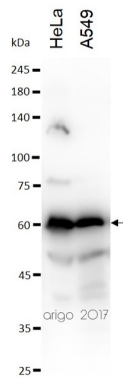
#### ARG55040 anti-SQSTM1 / p62 antibody IHC-P image

Immunohistochemistry: Paraffin-embedded Rat brain stained with ARG55040 anti-SQSTM1 / p62 antibody at 1:100 dilution.



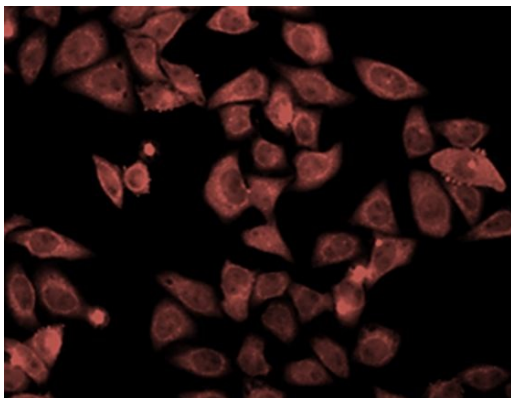
#### ARG55040 anti-SQSTM1 / p62 antibody WB image

Western blot: HeLa cells untreated or treated with Chloroquine. 20 µg of cell lysates stained with ARG55040 anti-SQSTM1 / p62 antibody at 1:1000 dilution.



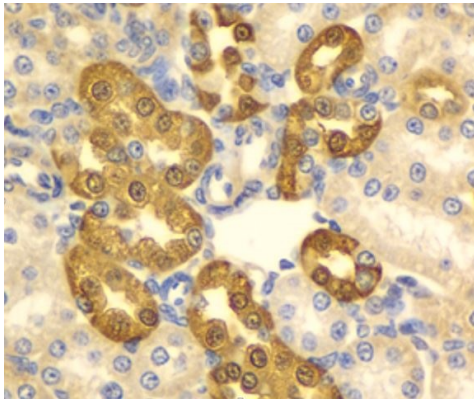
#### ARG55040 anti-SQSTM1 / p62 antibody WB image

Western blot: 30 µg of HeLa and A549 cell lysates stained with ARG55040 anti-SQSTM1 / p62 antibody at 1:500 dilution.



#### ARG55799 anti-LC3B antibody ICC/IF image

Immunofluorescence: U2OS cell stained with ARG55799 anti-LC3B antibody at 1:100 dilution.



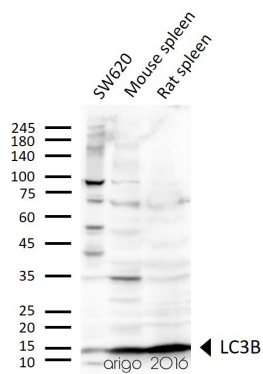
ARG55799 anti-LC3B antibody IHC-P image

Immunohistochemistry: Paraffin-embedded Rat kidney stained with ARG55799 anti-LC3B antibody at 1:100 dilution.



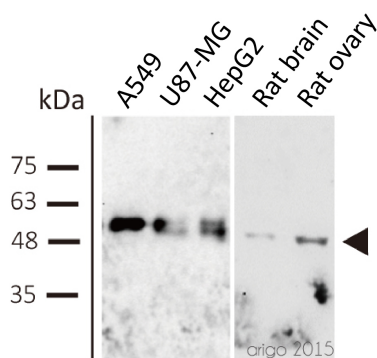
ARG55799 anti-LC3B antibody WB image

Western blot: 30 μg of HeLa untreated or treated with Chloroquine at 50 μM, 100 μM (18 hr). The blots stained with ARG55799 anti-LC3B antibody at 1:1000 dilution.



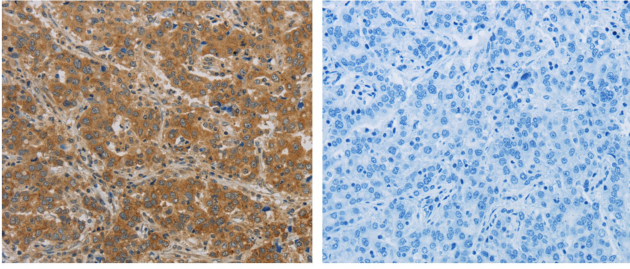
ARG55799 anti-LC3B antibody WB image

Western blot: 30 μg of SW620, Mouse spleen, and Rat spleen lysates stained with ARG55799 anti-LC3B antibody at 1:1000 dilution.



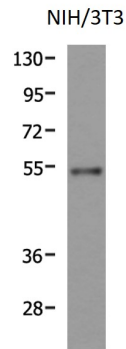
ARG65614 anti-Beclin 1 antibody WB image

Western blot: 30 μg of A549, U87-MG, HepG2, Rat brain, and Rat ovary lysates stained with ARG65614 anti-Beclin 1 antibody at 1:500 dilution.



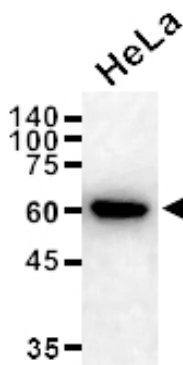
ARG65614 anti-Beclin 1 antibody IHC-P image

Immunohistochemistry: Paraffin-embedded Human liver cancer tissue stained with ARG65614 anti-Beclin 1 antibody (left) at 1/20 dilution, or the same antibody preincubated with antigen (right). (Original magnification: X200).



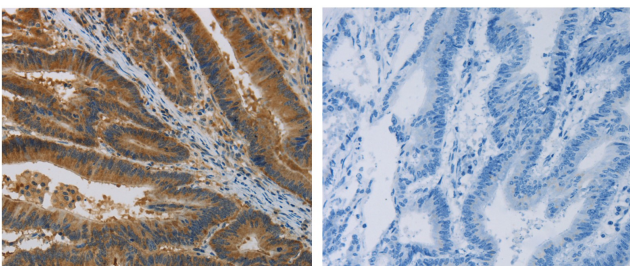
ARG65614 anti-Beclin 1 antibody WB image

Western blot: 40 µg of NIH/3T3 cell lysate stained with ARG65614 anti-Beclin 1 antibody at 1:700 dilution.



ARG65614 anti-Beclin 1 antibody WB image

Western blot: 20 µg of HeLa cell lysate stained with ARG65614 anti-Beclin 1 antibody at 1:500 dilution.



ARG65614 anti-Beclin 1 antibody IHC-P image

Immunohistochemistry: Paraffin-embedded Human colon cancer tissue stained with ARG65614 anti-Beclin 1 antibody (left) at 1/70 dilution, or the same antibody preincubated with antigen (right). (Original magnification: X200).