

CD3/CD19/CD45 antibody (FITC,PE,PE-Cy5)

Antigen:	CD3/CD19/CD45
Reactivity:	Human
Host:	Mouse
Clonality:	Monoclonal
Conjugate:	FITC,PE,PE-Cy5
Application:	Flow Cytometry (FACS)
Catalog no.:	ABIN2145031
Quantity:	20 tests

Product Details

Target details

Sub Type: Cocktail

Application Details

Application Notes:	Optimal working dilution should be determined by the investigator.
Assay Procedure:	<ul style="list-style-type: none">Take 100 µL peripheral blood anticoagulated by EDTA and add to the bottom of 5 mL tube, Add 10 µL labeled antibody to the bottom of flow tube mixing with the whole blood, incubate for 20 minutes at room temperature away from light, Add 2 mL 1×RBC lysis buffer, incubate for 10 minutes away from light after mixing, dissolve red blood cells (recommended: RBC lysing Solution 10×, Cat.: FXP001),Sample tube is set to 1000 rpm centrifugation for 5 minutes, discard the supernatant, Add 2 mL PBS wash buffer to resuspend the cells, then 1000 rpm centrifugation for 5 minutes, discard the supernatant, Add 0.5 mL PBS wash buffer to resuspend the cells and detect by flow cytometry (sample should be determined on the day on the machine and can also be added fixation overnight at 4 °C then measured).[PBS wash buffer: PBS +1 % FBS +0.1 % NaN3, Cat.: FXP005][Cell fixation: 2 % formaldehyde solution]
Restrictions:	For Research Use only

Handling

Format:	Liquid
Buffer:	Phosphate-buffered solution, pH 7.4, containing and 0.2 % (w/v) BSA
Preservative:	Sodium azide
Precaution of Use:	This product contains Sodium azide: a POISONOUS AND HAZARDOUS SUBSTANCE which should be handled by trained staff only.
Storage:	4 °C

Images

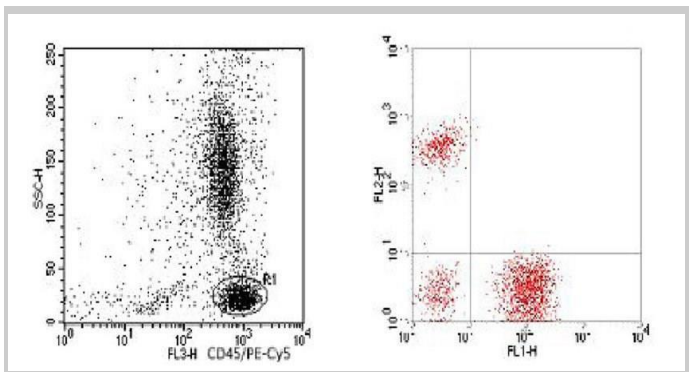


Image 1 for anti-CD3/CD19/CD45 antibody (FITC,PE,PE-Cy5)