



## Product Data Sheet

---

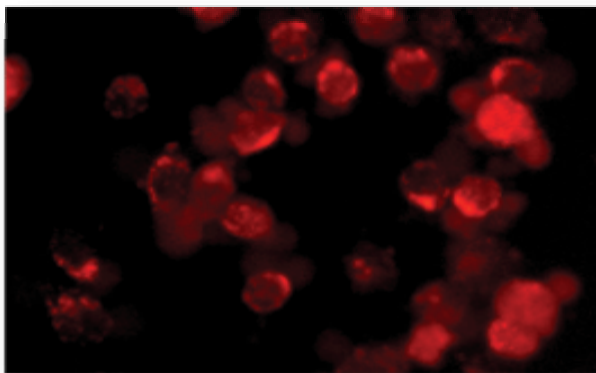
<b>Product Name:</b>	TAT (47-57), TAMRA-labeled	
<b>Catalog Number:</b>	AS-61211 (1 mg)	Lot Number: See label on vial
<b>Sequence:</b>	TAMRA-Tyr-Gly-Arg-Lys-Lys-Arg-Arg-Gln-Arg-Arg-Arg-OH (3-letter code) TAMRA-YGRKKRRQRRR (1-letter code)	
<b>Molecular Weight:</b>	1972.4	
<b>Peptide Purity:</b>	>95%	
<b>Appearance:</b>	Lyophilized red powder	

**Peptide Reconstitution:** TAT TAMRA-labeled peptide is freely soluble in water.

**Storage:** TAT TAMRA-labeled peptide is shipped at ambient temperature. Upon receipt, store lyophilized peptide at  $-20^{\circ}\text{C}$  or lower. Reconstituted peptide can be aliquoted and stored at  $-20^{\circ}\text{C}$  or lower.

**Description:** This is a fluorescent (TAMRA)-labeled TAT peptide, Abs/Em=541/568.

Uptake of TAMRA-TAT by HeLa Cells



HeLa cells were incubated with OptiMEM medium containing 10  $\mu\text{M}$  TAMRA-TAT (47-57), cat# 61211 for 1 h, washed and analyzed using fluorescence microscopy.

Related Products:

<b>Name</b>	<b>Cat #</b>	<b>Size</b>
Cys(Npys)-TAT (47-57) C(Npys)YGRKKRRQRRR-NH2	AS-61214	1 mg
TAT (47-57), FAM-labeled FAM-YGRKKRRQRRR	AS-61210	1 mg
FITC-LC-TAT (47-57) FITC-LC-YGRKKRRQRRR-NH2	AS-27042 AS-27043	0.5 mg 1 mg
Cys(Npys)-TAT (47-57), FAM-labeled C(Npys)YGRKKRRQRRR-K(FAM)-NH2	AS-61213	1 mg
Cys-TAT (47-57) CYGRKKRRQRRR-NH2	AS-61212	1 mg
Biotin-TAT (47-57) Biotin-YGRKKRRQRRR	AS-61209	1 mg

*For Research Use Only*