



Product Information Sheet

Product Name:	EndoClear™ Mouse Recombinant alpha-Synuclein Protein (< 0.1 EU per μg protein)
Catalog Number:	AS-56082-500
Lot Number:	See label on the vial
Amount/size:	500 μg
Source:	Full-length Recombinant mouse α -synuclein (GenBank Accession # NP_001035916) was expressed in <i>E. coli</i> , and purified from bacterial lysate using proprietary method. Endotoxin was further removed by proprietary technique. The molecular weight of the recombinant α -synuclein protein is 14,485 Da.
Activity:	α -synuclein was assayed for the fibrillation properties using Thioflavin T assay.
Applications:	Fibrillation, oligomerization, cell toxicity studies.
Purity:	Greater than 90% as determined by SDS-PAGE.
Endotoxin:	Less than 0.1 EU per μg /protein as tested by LAL method.
Storage:	The purified α -synuclein is supplied as lyophilized powder salt free. Store at 2-4 °C for immediate use within 1-2 weeks or at -80 °C for up to 12 months.

* previously referred to as: EndoFree human α -synuclein recombinant protein

Instructions: α -Synuclein is a major component of Lewy bodies in the affected neurons in Parkinson's disease.¹⁻⁴ This protein has a mass of 14.485 Da (140 amino acids long) and consists of a conserved degenerative amino-terminal domain and an acidic carboxyl-terminal with higher sequence divergence.¹⁻⁴ α -Synuclein is predominantly expressed in brain: specifically in cerebellum, thalamus, neocortex, hippocampus, and striatum regions.¹⁻² Other tissues express α -synuclein at very low levels.¹⁻⁴ The physiological role of α -synuclein is not yet well understood. However, the presence of imperfect KTKEGV lipid interacting repeats suggests that it may be involved in synaptic vesicle homeostasis.³

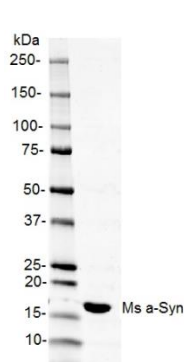


Figure 1.

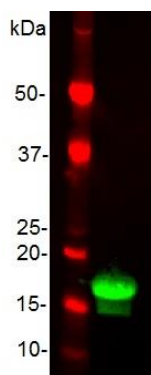


Figure 2.

Figure 1. Mouse α -synuclein on SDS-PAGE.
Purified protein was loaded onto 10-20% Tris-HCl gel at 3 μg /well.

Figure 2. Western Immunoblot of mouse α -synuclein.
Purified mouse α -synuclein protein was probed with anti- α -synuclein specific antibody.

Related Products

Product Name	Cat. #
Recombinant human α - synuclein (1 - 140), HiLyte Fluor™488 labeled	AS-55457
Recombinant Human β - Synuclein (1 - 134)	AS-55458-100 AS-55458-500 AS-55458-1000
SensoLyte® Anti-α-Synuclein (Human) ELISA Kit	AS-55550-H
EndoClear™* Human Recombinant alpha - Synuclein	AS-55555-100 AS-55555-500 AS-55555-1000
EndoClear™Plus Recombinant Human alpha - Synuclein	AS-56081-100 AS-56081-500
Recombinant human α - synuclein (1 - 140), biotin labeled	AS-55581
EndoClear™ Rat Recombinant alpha - Synuclein	AS-56083-100 AS-56083-500 AS-56083-1000

References:

1. Rivers, R. et al. *Protein Science* **17**, 887-898 (2008).
2. Bruening, W. et al. *Cancer*. **88**, 9, 2154-2163 (2000).
3. George M. J. *Genome Biology* **3**, 1, 1-6 (2001).
4. Latawiec, D. et al. *PloS ONE* **5**, 2, 1-8 (2010).

For Research Use Only!