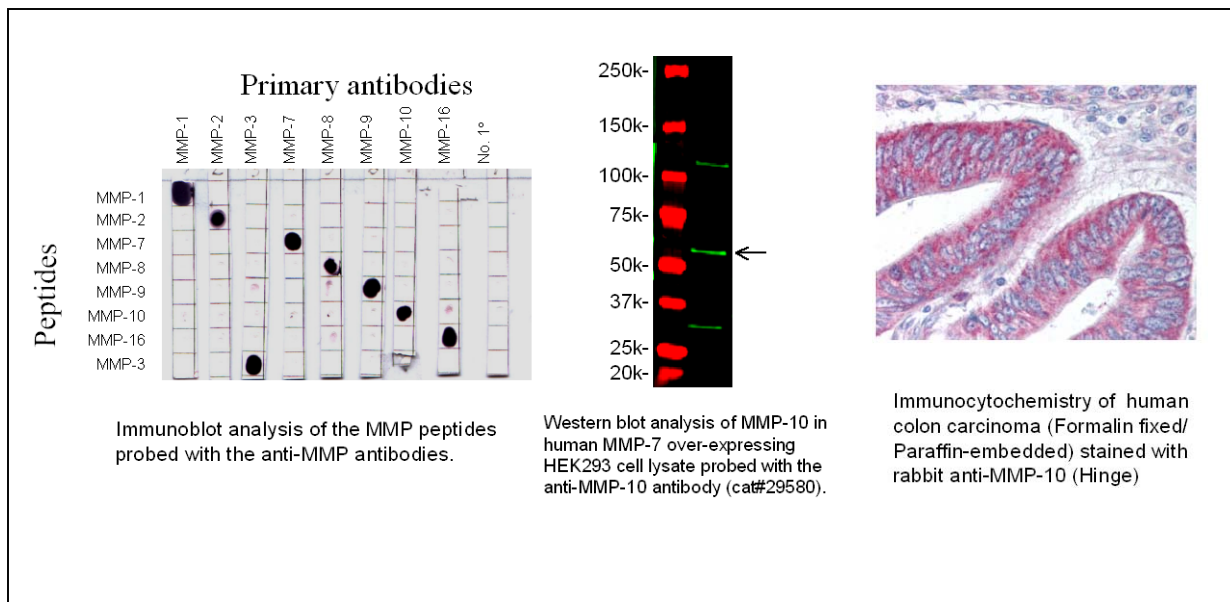




Product Data Sheet

| | |
|-----------------------------|---|
| Product Name: | Anti-MMP-10 (Hinge) (<i>Stromelysin-2, Transin-2</i>) |
| Catalog Number: | 29580 |
| Lot Number: | See label on vial |
| Product Description: | This polyclonal antibody is supplied as an epitope affinity purified rabbit IgG, 50 µg in 250 µl of 1X PBS (pH 7.4) containing 0.05% sodium azide. |
| Immunogen: | Rabbit anti-MMP-10 (Hinge) polyclonal antibody was raised against a synthetic peptide corresponding to a segment of the hinge region of human MMP-10. |
| Species Reactivity: | This antibody is specific to human. |
| Application Notes: | The following concentration ranges are recommended starting points for this product. |
| | WB: 0.5-2.0 µg/ml |
| | IHC: 5.0-20 µg/ml |



Background: Matrix metalloproteinases belong to a family of proteases that are essential for the breakdown of extracellular matrix (ECM); thus, they play an important role in apoptosis, tumor cell growth, invasion, metastasis, angiogenesis and wound healing (1-3). Most of the MMP's contain common domain structures, which include a signal sequence, a propeptide, a catalytic domain and a hemopexin-like (Hpx) domain (4). MMP-10 belongs to the Stromelysin group of proteases. Stromelysins degrade ECM proteoglycans, laminin, fibronectin and gelatin (4).

Storage: Store at 2-8°C for up to one year. Avoid repeated freezing and thawing.

References:

1. Itoh, Y. et al. *Essays in Biochemistry* **38**, 21 (2002).
2. Ito, A. et al. *J Biol Chem* **271**, 14651 (1996).
3. Fowlkes, J. et al. *J Biol Chem* **270**, 274 (1995).
4. Woessner, J. et al. *FASEBJ* **5**, 2145 (1991).

This product is for *in vitro* research use only.