

GFP Expressing Human MDA-MB-231 (Breast Cancer) Cells
ORDER INFORMATION

Name of Products: GFP-Expressing Human MDA-MB-231 (Breast Cancer) Cells
Catalogue Number: **cAP-0034GFP**
Product Format: Frozen Vial
Cell Number: >1 x 10⁶/vial

General Information

MDA-MB-231 is a human adenocarcinoma cells derived from 51 year old (Caucasian) patient metastatic site. MDA-MB-231 are adherent epithelial like cells when culture with DMEM full medium containing 10% FBS. GFP Expressing MDA-MB-231 (GFP-MDA-MB-231) cells are Puromycin resistant cells after MDA-MB-231 cells are transfected with GFP expressing lentivirues. The cells are shipped in proliferating culture with >90 confluence or in a frozen vial with > 1.0 x 10⁶cells/vial.

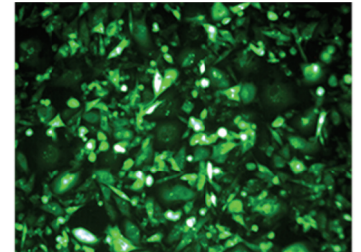
GFP-MDA-MB-231 are negative for HIV-1, HBV, HCV, and mycoplasma.

Product Use: **GFP-MDA-MB-231** cells are for research use only.

Shipping: Frozen Vials in dry ice package.

Handling of Arriving Cells

When you receive the cells in a frozen vial, you can transfer the vial of cells into a -80°C freezer for short period storage or a liquid nitrogen tank for long term storage. Thaw the cells in a 37°C water bath, and then transfer the cells into a T25 flask pre-coated with Quick coating solution (cAP-01) as described in details in Subculture Protocol.



cAP-0034GFP GFP Expressing Human MDA-MB-231 Cells

Subculture Protocol

- A) Pre-coating of T25 flasks: Add 2ml of Quick Coating Solution (**cAP-01**) into one T25 flask and make sure whole surface of the flask is covered with the coating solution. Five minutes later, dispose excessive Quick Coating Solution by aspiration and the flask is ready to be used (no need for overnight incubation when using Quick Coating Solution). Other extracellular matrix can be used including gelatin, collagen, and fibronectin and you are advised to test the conditions for using those materials in advance.
- B) Rinse the cells in T25 flask with 5ml HBSS (**Room Temperature, RT**) twice.
- C) Add 2ml of Trypsin/EDTA (**RT**) (cAP-23) into one T25 flask (make sure the whole surface of the T25 flask is covered with Trypsin/EDTA), and gently dispose the excessive Trypsin/EDTA solution **within 20 seconds** with aspiration.
- D) Leave the T25 flask with the cells at **RT** for 1 minute (the cells usually will detach from the surface within 1-2 minutes). You can monitor the cells under microscope and when most of cells become rounded up, hit the flask against the bench surface, and the cells will move on the surface of the flask when monitoring under microscope.
- E) Add 5ml Trypsin Neutralization Buffer and spin the cells down with 800g for 5 minutes.
- F) Re-suspend the cell pellet with 10 - 20ml of DMEM full medium and the cell suspension is transferred directly into 4 pre-coated T25 flasks (5ml each, and the cells are sub-cultured at 1: 4 ratios)
- G) Change medium every 2-3 days and cells usually become confluent within 5-7 days (when split at a 1:4 ratio).

Related products

| | | | |
|--|--------|-------|-----------------|
| Quick Coating Solution | cAP-01 | 240ml | Angio-Proteomie |
| HBSS w/o Ca ²⁺ , Mg ²⁺ | cAP-11 | 100ml | Angio-Proteomie |
| Trypsin/EDTA Solution | cAP-23 | 100ml | Angio-Proteomie |
| Trypsin Neutralization Solution | cAP-28 | 100ml | Angio-Proteomie |

Caution: Handling human tissue derived products is potentially bio-hazardous. Although each cell strain is tested negative for HIV, HBV and HCV DNA, diagnostic tests are not necessarily 100% accurate; therefore, proper precautions must be taken to avoid inadvertent exposure. Always wear gloves and safety glasses when working these materials. Never mouth pipette. We recommend following the universal procedures for handling products of human origin as the minimum precaution against contamination.