

Monoclonal Antibody to CD31 / PECAM1 - FITC

Alternate names:	EndoCAM, GPIIA', PECAM-1, Platelet endothelial cell adhesion molecule
Catalog No.:	SM464F
Quantity:	0.1 mg
Concentration:	0.1 mg/ml
Background:	<p>CD31, also known as platelet endothelial cell adhesion molecule 1 (PECAM1), is a type I integral membrane glycoprotein and a member of the immunoglobulin superfamily of cell surface receptors. It is constitutively expressed on the surface of endothelial cells, and concentrated at the junction between them. It is also weakly expressed on many peripheral lymphoid cells and platelets.</p> <p>CD31 has been used to measure angiogenesis in association with tumor recurrence. Other studies have also indicated that CD31 and CD34 can be used as markers for myeloid progenitor cells and recognize different subsets of myeloid leukemia infiltrates (granular sarcomas).</p> <p>Ovine CD31 is predominantly expressed by peripheral blood platelets and a small percentage of lymphocytes. CD31 is also highly expressed by ovine endothelial cells.</p>
Uniprot ID:	P51866
NCBI:	9913
Host / Isotype:	Mouse / IgG2a
Clone:	CO.3E1D4
Immunogen:	Ovine leucocytes. Spleen cells from immunised BALB/c mice were fused with cells of the SP2-0/Ag14 mouse myeloma cell line.
Format:	<p>State: Liquid purified IgG fraction. Purification: Affinity Chromatography on Protein G. Buffer System: PBS, pH 7.4 containing 0.09% Sodium Azide as preservative and 1% BSA as stabilizer. Label: FITC – Fluorescein Isothiocyanate Isomer 1</p>
Applications:	<p>Flow Cytometry: Use 10 µl of neat CD31 antibody to label 1 x 10⁶ cells in 100 µl. Other applications not tested. Optimal dilutions are dependent on conditions and should be determined by the user.</p>
Specificity:	This antibody is specific for Ovine CD31, also known as PECAM-1.
Species Reactivity:	Tested: Sheep. Reacts with Bovine and Goat.

For research and in vitro use only. Not for diagnostic or therapeutic work.

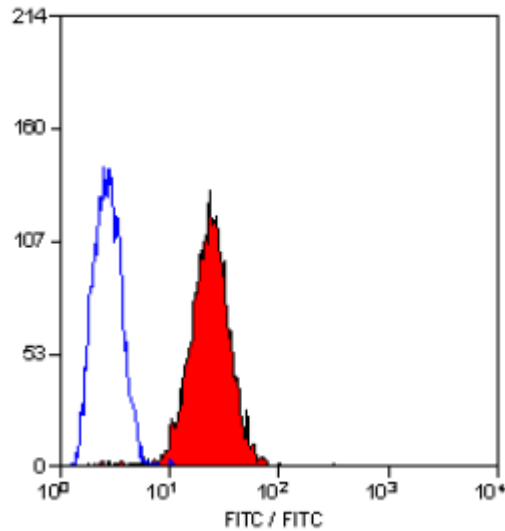
Material Safety Datasheets are available at www.acris-antibodies.com or on request.

Antibody Hotline - Technical Questions - Antibody Location Service
Free Call: 0800-2274746 (Germany only) - www.acris-antibodies.com

Storage: Store the antibody undiluted at 2-8°C for one month or (in aliquots) at -20°C for longer. This product is photosensitive and should be protected from light. Avoid repeated freezing and thawing. Shelf life: one year from despatch.

General References: 1. Brodersen, R. et al. (1998) Analysis of the immunological cross reactivities of 213 well characterized monoclonal antibodies with specificities against various leucocyte surface antigens of human and 11 animal species: *Vet. Immunol. Immunopathol.* 64: 1-13.
2. Pintado. C. O. et al. (1995) A monoclonal antibody to an ovine gp130 molecule inhibits homotypic aggregation induced by anti CD43 monoclonal antibodies of ruminant leukocytes. *Immunol. Lett.* 45: 81-85.

Pictures:



Staining of sheep peripheral blood platelets with MOUSE ANTI OVINE CD31 antibody (SM464F).

For research and in vitro use only. Not for diagnostic or therapeutic work.

Material Safety Datasheets are available at www.acris-antibodies.com or on request.

Antibody Hotline - Technical Questions - Antibody Location Service
Free Call: 0800-2274746 (Germany only) - www.acris-antibodies.com