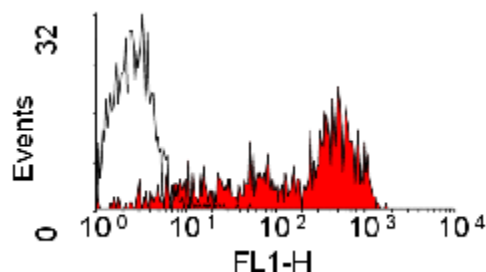


Monoclonal Antibody to Canine CD45R -FITC

Catalog No.:	SM416F
Quantity/Conc.:	0.1 mg / 0.1 mg/ml
Clone:	YKIX 753.22.2
Immunogen:	Canine thymocytes
Host/Isotype:	Rat IgG2b
Format:	This antibody is supplied as liquid, Protein G affinity purified immunoglobulin fraction, conjugated to Fluorescein Isothiocyanate Isomer 1 (FITC) in PBS buffer with 0.09% sodium azide as preservative and 1% BSA as stabilizer.
Applications:	Flow cytometry: neat -1/5; use 10 µl of the suggested working dilution to label 10 ⁶ cells. Optimal dilutions of this antibody are dependent on conditions and should be determined by the user.



Staining of canine peripheral blood lymphocytes with rat anti-canine CD45R: FITC (SM416F)

Specificity:	This antibody, clone YKIX 753.22.2, was clustered as canine CD45R in the First Canine Leucocyte Antigen Workshop (CLAW). It immunoprecipitates an antigen of 200kD from Con-A blast (1). CD45 is expressed on all leukocytes in canine peripheral blood and may be against the CD45R isoforms. CD45R is expressed on subsets of leukocytes (neutrophils are weak) in canine blood of all out bred mongrels and beagles tested.
Storage:	Store the antibody at 4-8°C for one month or at -20°C for longer. Avoid repeated freezing and thawing. This product is photosensitive and should be protected from light. Shelf life: one year from despatch.

References:

1. Cobbold, S and Metcalfe, S. (1994). Monoclonal antibodies that define canine homologues of human CD antigens: summary of the First International Canine Leukocyte Antigen Workshop (CLAW). Tissue Antigens. 43: 137 - 154.

SM416F/ME1203

**For research and *in vitro* use only. Not for diagnostic or therapeutic work.
Material Safety Datasheets are available at www.acris-antibodies.com or on request.**

**Antibody Hotline • Technical Questions • Antibody Location Service
0800-2274746
service@acris-antibodies.de**

www.acris-antibodies.com