

Monoclonal Antibody to CD8 - FITC

Alternate names:	CD8 alpha chain, CD8A, MAL, T-cell surface glycoprotein CD8 alpha chain, T-lymphocyte differentiation antigen T8/Leu-2
Catalog No.:	SM411F
Quantity:	0.1 mg
Concentration:	0.1 mg/ml
Background:	The CD8 antigen is a cell surface glycoprotein found on most cytotoxic T lymphocytes that mediates efficient cell to cell interactions within the immune system. The CD8 antigen, acting as a coreceptor, and the T cell receptor on the T lymphocyte recognize antigen displayed by an antigen presenting cell (APC) in the context of class I MHC molecules. The functional coreceptor is either a homodimer composed of two alpha chains, or a heterodimer composed of one alpha and one beta chain. Both alpha and beta chains share significant homology to immunoglobulin variable light chains.
Uniprot ID:	P33706
NCBI:	NP_001002935
GeneID:	403157
Host / Isotype:	Rat / IgG1
Clone:	YCATE55.9
Immunogen:	Canine CD8a chimaeric human IgG1 Fc fusion protein. Spleen cells from immunised DA rat were fused with cells of the Y3/A1.2.3 rat myeloma cell line.
Format:	State: Liquid purified IgG Purification: Affinity chromatography on Protein G Buffer System: PBS, pH 7.4 containing 0.09% Sodium Azide and 1% Bovine Serum Albumin Label: FITC – Fluorescein Isothiocyanate Isomer 1
Applications:	Flow Cytometry: Neat - 1/5; Use 10µl of the suggested working dilution to label 10e6 cells in 100µl. Other applications not tested. Optimal dilutions are dependent on conditions and should be determined by the user.
Specificity:	This antibody, clone YCATE 55.9 was clustered as CD8 in the first canine leukocyte antigen workshop. The antibody reacts with canine CD8a transfectants. Clone YCATE 55.9 is reported to block MHC class I dependant T-cell responses in vitro and in vivo. Species: Dog. Other species not tested.

For research and in vitro use only. Not for diagnostic or therapeutic work.

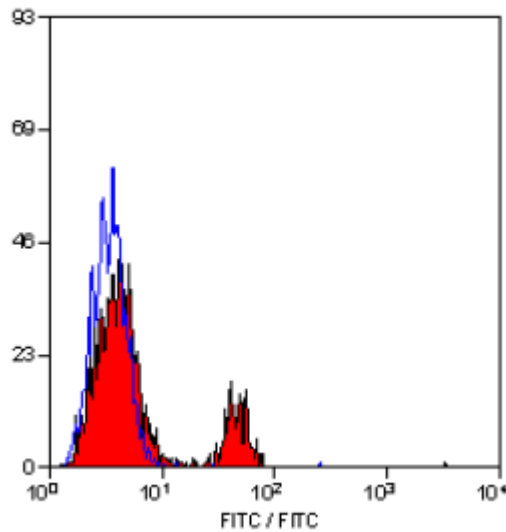
Material Safety Datasheets are available at www.acris-antibodies.com or on request.

Antibody Hotline - Technical Questions - Antibody Location Service
Free Call: 0800-2274746 (Germany only) - www.acris-antibodies.com

Storage: Store the antibody undiluted at 2-8°C for one month or (in aliquots) at -20°C for longer. Avoid repeated freezing and thawing. This product is photosensitive and should be protected from light. Shelf life: one year from despatch.

General References: 1. Cobbold, S and Metcalfe, S. (1994) Monoclonal antibodies that define canine homologues of human CD antigens: summary of the First International Canine Leukocyte Antigen Workshop (CLAW). *Tissue Antigens*. 43:137 - 154.
2. Gorman, S. et al. (1994) Isolation and expression of cDNA encoding the canine CD4 and CD8a antigens. *Tissue Antigens*. 43:184 - 188.
3. Watson, C. J. E. et al. (1993) CD4 and CD8 monoclonal antibody therapy: strategies to prolong renal allograft survival in the dog. *Brit. J. Surg.* 80: 1389 - 1392.

Pictures:



Staining of canine peripheral blood lymphocytes with RAT ANTI CANINE CD8:FITC (SM411F).

For research and in vitro use only. Not for diagnostic or therapeutic work.

Material Safety Datasheets are available at www.acris-antibodies.com or on request.

Antibody Hotline - Technical Questions - Antibody Location Service
Free Call: 0800-2274746 (Germany only) - www.acris-antibodies.com