

Monoclonal Antibody to T Cell Receptor (TCR) alpha/beta - FITC

Alternate names:	T-Cell Receptor alpha, T-Cell Receptor alpha beta, T-Cell Receptor beta, TCRA, TCRB
Catalog No.:	SM321F
Quantity:	0.1 mg
Concentration:	0.1 mg/ml
Host / Isotype:	Mouse / IgG1
Clone:	R73
Immunogen:	Rat T Blasts and Erythrocytes. Spleen cells from immunised BALB/c mice were fused with cells of the X63.Ag8.653 mouse myeloma cell line.
Format:	State: Liquid purified IgG Purification: Ion exchange chromatography Buffer System: PBS, pH 7.2 containing 0.09% Sodium Azide and 1% Bovine Serum Albumin Label: FITC – Fluorescein Isothiocyanate Isomer 1
Applications:	Flow Cytometry. Other applications not tested. Optimal dilutions are dependent on conditions and should be determined by the user.
Specificity:	This antibody detects a T cell specific molecule consisting of two disulphide-linked subunits of 40 and 46 kD molecular weight, respectively, on 97% of peripheral rat T cells as defined by the OX-52 marker. R7.3 is mitogenic for unseparated spleen cells and for purified T cells. In the rat thymus, mature medullary cells express the R7.3 determinant at the same level as peripheral T cells, whereas 94% of CD4- CD8- thymocytes are R7.3 negative. It is most likely directed at a constant determinant of the rat alpha/beta heterodimeric T cell antigen receptor. Species: Rat, Cynomolgus monkey, Monkey. Other species not tested.
Storage:	Store the antibody undiluted at 2-8°C for one month or (in aliquots) at -20°C for longer. Avoid repeated freezing and thawing. This product is photosensitive and should be protected from light. Shelf life: one year from despatch.
General References:	1. Tsuchida, M. et al. (1994) Identification of CD4- CD8- alpha/beta T cells in the subarachnoid space of rats with experimental autoimmune encephalomyelitis. A possible route by which effector cells invade the lesions. <i>Immunology</i> 81: 420-427. 2. Tomida, S. et al. (1994) Intracellular adhesion molecule-1 and leucocyte function-associated antigen-1 are involved in protection mediated by CD3 + TCR alpha/beta- T cells at the early stages after infection with <i>Listeria monocytogenes</i> in rats. <i>Int. Immunol.</i> 6: 955-961.

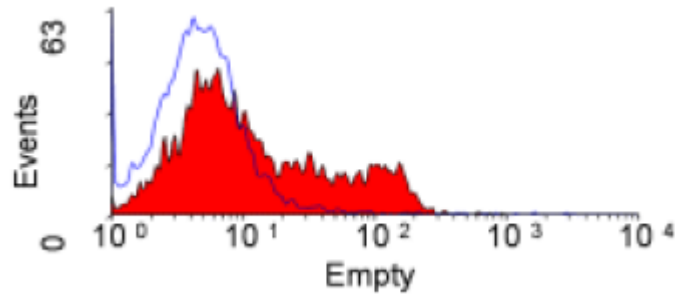
For research and in vitro use only. Not for diagnostic or therapeutic work.

Material Safety Datasheets are available at www.acris-antibodies.com or on request.

Antibody Hotline - Technical Questions - Antibody Location Service
Free Call: 0800-2274746 (Germany only) - www.acris-antibodies.com

3. Hunig, T. et al. (1989) A monoclonal antibody to a constant determinant of the rat T-cell antigen receptor that induces T-cell activation. *J. Exp. Med.* 169: 73-86.
4. Yoshino, N. et al. (2000) Upgrading of flow cytometric analysis for absolute counts, cytokines and other antigenic molecules of Cynomolgus monkeys (*Macaca fascicularis*) by using anti-human cross-reactive antibodies. *Exp. Anim.* 49 (2): 97-110

Pictures:



SM321F staining of rat splenocytes.