

## Monoclonal Antibody to CD18 / ITGB2 - FITC

<b>Alternate names:</b>	95 subunit beta, Cell surface adhesion glycoproteins LFA-1/CR3/p150, Complement receptor C3 subunit beta, Integrin beta-2, MFI7
<b>Catalog No.:</b>	SM3103F
<b>Quantity:</b>	100 Tests
<b>Background:</b>	CD18 is a 90-95 kDa type I transmembrane protein expressed on all leukocytes. CD18, integrin b2 subunit, forms heterodimers with four types of CD11 molecule to constitute leukocyte (b2) integrins: aLb2 (CD11a/CD18, LFA-1), aMb2 (CD11b/CD18, Mac-1, CR3), aXb2 (CD11c/CD18) and aDb2 (CD11d/CD18). In most cases, the response mediated by the integrin is a composite of the functions of its individual subunits. These integrins are essential for proper leukocyte migration, mediating intercellular contacts. Absence of CD18 leads to leukocyte adhesion deficiency-1; severe reduction of CD18 expression leads to the development of a psoriasiform skin disease. CD18 is also a target of Mannheimia (Pasteurella) haemolytica leukotoxin and is sufficient to mediate leukotoxin-mediated cytolysis.
<b>Uniprot ID:</b>	<a href="#">P05107</a>
<b>NCBI:</b>	<a href="#">NP_000202.2</a>
<b>GeneID:</b>	<a href="#">3689</a>
<b>Host / Isotype:</b>	Mouse / IgG1
<b>Clone:</b>	MEM-48
<b>Immunogen:</b>	Leucocytes of a patient suffering from a LGL-type leukaemia
<b>Format:</b>	<b>State:</b> Liquid purified Ig fraction <b>Buffer System:</b> Phosphate buffered saline (PBS) containing 15 mM sodium azide and 0.2% (w/v) high-grade protease free Bovine Serum Albumin (BSA) as a stabilizing agent <b>Label:</b> FITC – Conjugated with Fluorescein isothiocyanate under optimum conditions. The reagent is free of unconjugated and adjusted for direct use
<b>Applications:</b>	Flow Cytometry analysis of human blood cells using 20 µl reagent / 100 µl whole blood. Other applications not tested. Optimal dilutions are dependent on conditions and should be determined by the user.
<b>Specificity:</b>	The antibody recognizes an epitope involving residues 534-546 in cysteine-rich repeat 3 of the CD18 antigen (Integrin beta2 chain). <b>Species:</b> Human. Other species not tested.
<b>Storage:</b>	Store the antibody at 2 - 8 °C. DO NOT FREEZE! This product is photosensitive and should be protected from light. Shelf life: one year from despatch.

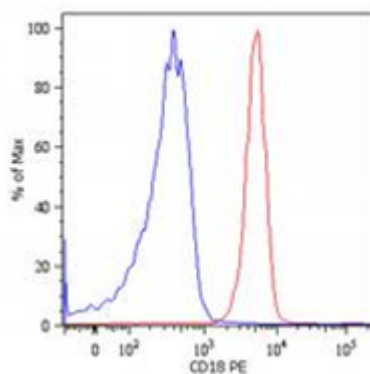
**For research and in vitro use only. Not for diagnostic or therapeutic work.**

Material Safety Datasheets are available at [www.acris-antibodies.com](http://www.acris-antibodies.com) or on request.

Antibody Hotline - Technical Questions - Antibody Location Service  
Free Call: 0800-2274746 (Germany only) - [www.acris-antibodies.com](http://www.acris-antibodies.com)

- General References:**
- Gao JX, Issekutz AC: Mac-1 (CD11b/CD18) is the predominant beta 2 (CD18) integrin mediating human neutrophil migration through synovial and dermal fibroblast barriers. *Immunology*. 1996 Jul;88(3):463-70.
  - Drbal K, Angelisova P, Cerny J, Pavlistova D, Cebecauer M, Novak P, Horejsi V.: Human leukocytes contain a large pool of free forms of CD18. *Biochem Biophys Res Commun*. 2000 Aug 28;275(2):295-9.
  - Shang XZ, Issekutz AC: Contribution of CD11a/CD18, CD11b/CD18, ICAM-1 (CD54) and -2 (CD102) to human monocyte migration through endothelium and connective tissue fibroblast barriers. *Eur J Immunol*. 1998 Jun;28(6):1970-9.
  - Kess D, Peters T, Zamek J, Wickenhauser C, Tawadros S, Loser K, Varga G, Grabbe S, Nischt R, Sunderkötter C, Müller W, Krieg T, Scharffetter-Kochanek K: CD4+ T cell-associated pathophysiology critically depends on CD18 gene dose effects in a murine model of psoriasis. *J Immunol*. 2003 Dec 1;171(11):5697-706.
  - Solovjov DA, Pluskota E, Plow EF: Distinct roles for the alpha and beta subunits in the functions of integrin alphaMbeta2. *J Biol Chem*. 2005 Jan 14;280(2):1336-45.
  - Peters T, Sindrilaru A, Wang H, Oreshkova T, Renkl AC, Kess D, Scharffetter-Kochanek K: CD18 in monogenic and polygenic inflammatory processes of the skin. *J Investig Dermatol Symp Proc*. 2006 Sep;11(1):7-15.
  - Dassanayake RP, Maheswaran SK, Srikumaran S: Monomeric expression of bovine beta2-integrin subunits reveals their role in *Mannheimia haemolytica* leukotoxin-induced biological effects. *Infect Immun*. 2007 Oct;75(10):5004-10.
  - Bazil V, Stefanova I, Hilgert I, Kristofova H, Vanek S, Horejsi V.: Monoclonal antibodies against human leucocyte antigens. IV. Antibodies against subunits of the LFA-1 (CD11a/CD18) leucocyte-adhesion glycoprotein. *Folia Biol (Praha)*. 1990;36(1):41-50.
  - Larson RS, Springer TA: Structure and function of leukocyte integrins. *Immunol Rev*. 1990 Apr;114:181-217.
  - Stefanova I, Horejsi V: Association of the CD59 and CD55 cell surface glycoproteins with other membrane molecules. *J Immunol*. 1991 Sep 1;147(5):1587-92.
  - Garnotel R, Rittié L, Poitevin S, Monboisse JC, Nguyen P, Potron G, Maquart FX, Randoux A, Gillery P: Human blood monocytes interact with type I collagen through alpha x beta 2 integrin (CD11c-CD18, gp150-95). *J Immunol*. 2000 Jun 1;164(11):5928-34.
  - Otonello L, Epstein AL, Dapino P, Barbera P, Morone P, Dallegri F: Monoclonal Lym-1 antibody-dependent cytotoxicity by neutrophils exposed to granulocyte-macrophage colony-stimulating factor: intervention of Fc gamma RII (CD32), CD11b-CD18 integrins, and CD66b glycoproteins. *Blood*. 1999 May 15;93(10):3505-11.
  - Schiff DE, Rae J, Martin TR, Davis BH, Curnutte JT: Increased phagocyte Fc gamma RI expression and improved Fc gamma-receptor-mediated phagocytosis after in vivo recombinant human interferon-gamma treatment of normal human subjects. *Blood*. 1997 Oct 15;90(8):3187-94.
  - Kuttruff S, Koch S, Kelp A, Pawelec G, Rammensee HG, Steinle A: Nkp80 defines and stimulates a reactive subset of CD8 T cells. *Blood*. 2009 Jan 8;113(2):358-69.

**Pictures:**



Surface staining of human peripheral blood cells with anti-human CD18 (MEM-48) PE. Cells in the granulocyte gate were used for analysis.

**For research and in vitro use only. Not for diagnostic or therapeutic work.**

Material Safety Datasheets are available at [www.acris-antibodies.com](http://www.acris-antibodies.com) or on request.

Antibody Hotline - Technical Questions - Antibody Location Service  
Free Call: 0800-2274746 (Germany only) - [www.acris-antibodies.com](http://www.acris-antibodies.com)

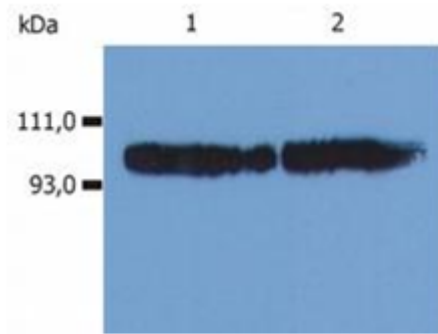
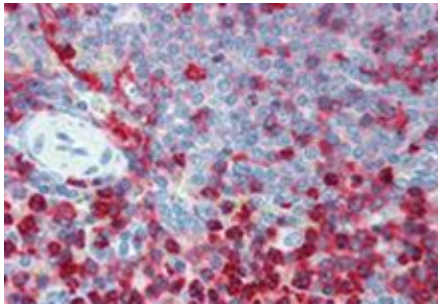


Fig. 1B Western Blotting

Western Blotting analysis (non-reducing conditions) of whole cell lysate using anti-human CD18 (MEM-48).

Lane 1: KG-1a human acute myeloid leukemia cell line

Lane 2: HPB-ALL human peripheral blood T cell leukemia cell line



Immunohistochemistry staining of human spleen (paraffin sections) using anti-CD18 (MEM-48).

**For research and in vitro use only. Not for diagnostic or therapeutic work.**

Material Safety Datasheets are available at [www.acris-antibodies.com](http://www.acris-antibodies.com) or on request.

Antibody Hotline - Technical Questions - Antibody Location Service  
Free Call: 0800-2274746 (Germany only) - [www.acris-antibodies.com](http://www.acris-antibodies.com)