

Monoclonal Antibody to CD8 - PE

Alternate names:	CD8 alpha chain, CD8A, MAL, T-cell surface glycoprotein CD8 alpha chain, T-lymphocyte differentiation antigen T8/Leu-2
Catalog No.:	SM3102R
Quantity:	100 Tests
Concentration:	0.1 mg/ml
Background:	The CD8 T cell coreceptor (monomer approx. 32-34 kDa) is expressed as ab heterodimer on majority of MHC I-restricted conventional T cells and thymocytes and as aa homodimer on subsets of memory T cells, intraepithelial lymphocytes, NK cells and dendritic cells. Regulation of CD8b level on T cell surface seems to be an important mechanism to control their effector function. Assembly of CD8 a-b but not a-a dimers is connected with formation or localization to the lipid rafts. Recruiting triggered TCR complexes to these membrane microdomains as well as affinity of TCR to MHC I is modulated by CD8, thereby affecting the functional diversity of the TCR signaling.
Uniprot ID:	P01732
NCBI:	NP_001759
GeneID:	925
Host / Isotype:	Mouse / IgG2a
Clone:	MEM-31
Immunogen:	Crude thymus membrane fraction.
Format:	State: Liquid purified Ig fraction Label: PE – R-Phycoerythrin under optimum conditions. The conjugate is purified by size-exclusion chromatography and adjusted for direct use
Applications:	Flow Cytometry analysis of human blood cells using 20 μ l reagent / 100 μ l whole blood or 10e6 cells in a suspension. Does not work in Immunohistochemistry on paraffin sections or Western blot. Other applications not tested. Optimal dilutions are dependent on conditions and should be determined by the user.
Specificity:	The antibody recognizes a conformationally-dependent epitope of CD8 antigen. Species: Human. Other species not tested.
Storage:	Store at 2-8 °C. Do not freeze. Avoid prolonged exposure to light. Shelf life: one year from despatch.
General References:	1. Devine L, Thakral D, Nag S, Dobbins J, Hodsdon ME, Kavathas PB: Mapping the binding site on CD8 beta for MHC class I reveals mutants with enhanced binding. J Immunol. 2006 Sep 15;177(6):3930-8.

For research and in vitro use only. Not for diagnostic or therapeutic work.

Material Safety Datasheets are available at www.acris-antibodies.com or on request.

Antibody Hotline - Technical Questions - Antibody Location Service
Free Call: 0800-2274746 (Germany only) - www.acris-antibodies.com

2. Pang DJ, Hayday AC, Bijlmakers MJ.: CD8 Raft localization is induced by its assembly into CD8alpha beta heterodimers, Not CD8alpha alpha homodimers. *J Biol Chem.* 2007 May 4;282(18):13884-94.
3. van den Berg HA, Wooldridge L, Laugel B, Sewell AK: Coreceptor CD8-driven modulation of T cell antigen receptor specificity. *J Theor Biol.* 2007 Nov 21;249(2):395-408.
4. Horejsi V. et al.: Monoclonal antibodies against human leucocyte antigens. I. Antibodies against beta-2-microglobulin, immunoglobulin kappa light chains, HLA-DR-like antigens, T8 antigen, T1 antigen, a monocyte antigen, and a pan-leucocyte antigen. *Folia Biol. (Praha)* 32, 12 (1986).
5. *Leukocyte Typing III.*, McMichael A. J. et al (Eds.), Oxford University Press (1987).
6. Horejsi V, Angelisova P, Bazil V, Kristofova H, Stoyanov S, Stefanova I, Hausner P, Vosecky M, Hilgert I: Monoclonal antibodies against human leucocyte antigens. II. Antibodies against CD45 (T200), CD3 (T3), CD43, CD10 (CALLA), transferrin receptor (T9), a novel broadly expressed 18-kDa antigen (MEM-43) and a novel antigen of restricted expression (MEM-74). *Folia Biol (Praha).* 1988;34(1):23-34.
7. Drbal K, Moertelmaier M, Holzhauser C, Muhammad A, Fuertbauer E, Howorka S, Hinterberger M, Stockinger H, Schütz GJ: Single-molecule microscopy reveals heterogeneous dynamics of lipid raft components upon TCR engagement. *Int Immunol.* 2007 May;19(5):675-84.
8. Brdicková N, Brdicka T, Angelisová P, Horváth O, Spicka J, Hilgert I, Paces J, Simeoni L, Kliche S, Merten C, Schraven B, Horejsí V: LIME: a new membrane Raft-associated adaptor protein involved in CD4 and CD8 coreceptor signaling. *J Exp Med.* 2003 Nov 17;198(10):1453-62.
9. Estefanía E, Flores R, Gómez-Lozano N, Aguilar H, López-Botet M, Vilches C: Human KIR2DL5 is an inhibitory receptor expressed on the surface of NK and T lymphocyte subsets. *J Immunol.* 2007 Apr 1;178(7):4402-10.
10. Linnebacher M, Wienck A, Boeck I, Klar E: Identification of an MSI-H tumor-specific cytotoxic T cell epitope generated by the (-1) frame of U79260(FTO). *J Biomed Biotechnol.* 2010;2010:841451.

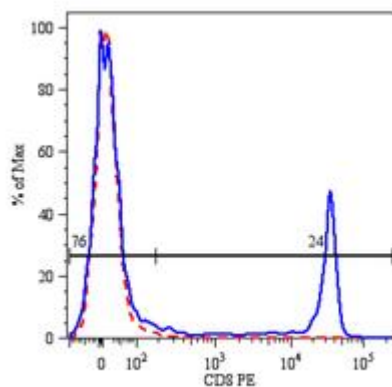
Pictures:


Fig. 1.

Surface staining of human peripheral blood lymphocytes using anti-human CD8 (clone MEM-31) PE

For research and in vitro use only. Not for diagnostic or therapeutic work.

Material Safety Datasheets are available at www.acris-antibodies.com or on request.

Antibody Hotline - Technical Questions - Antibody Location Service
Free Call: 0800-2274746 (Germany only) - www.acris-antibodies.com