

Monoclonal Antibody to CD8 - FITC

Alternate names:	CD8 alpha chain, CD8A, MAL, T-cell surface glycoprotein CD8 alpha chain, T-lymphocyte differentiation antigen T8/Leu-2
Catalog No.:	SM3102F
Quantity:	100 Tests
Background:	The CD8 T cell coreceptor (monomer approx. 32-34 kDa) is expressed as ab heterodimer on majority of MHC I-restricted conventional T cells and thymocytes and as aa homodimer on subsets of memory T cells, intraepithelial lymphocytes, NK cells and dendritic cells. Regulation of CD8b level on T cell surface seems to be an important mechanism to control their effector function. Assembly of CD8 a-b but not a-a dimers is connected with formation or localization to the lipid rafts. Recruiting triggered TCR complexes to these membrane microdomains as well as affinity of TCR to MHC I is modulated by CD8, thereby affecting the functional diversity of the TCR signaling.
Uniprot ID:	P01732
NCBI:	NP_001759
GeneID:	925
Host / Isotype:	Mouse / IgG2a
Clone:	MEM-31
Immunogen:	Crude thymus membrane fraction.
Format:	State: Liquid purified Ig fraction Buffer System: Phosphate buffered saline (PBS) containing 15 mM Sodium Azide and 0.2% (w/v) high-grade protease free BSA as a stabilizing agent. Label: FITC – Fluorescein isothiocyanate under optimum conditions. The reagent is free of unconjugated and adjusted for direct use
Applications:	Flow Cytometry: Human blood cells using 20 µl reagent / 100 µl whole blood or 10e6 cells in a suspension. Does not work in Immunohistochemistry on formalin fixed cells or Western blot. Other applications not tested. Optimal dilutions are dependent on conditions and should be determined by the user.
Specificity:	The antibody recognizes a conformationally-dependent epitope of CD8 antigen (does not react with formaldehyde-fixed cells, negative in Western Blotting application).
Species Reactivity:	Tested: Human.
Storage:	Store the antibody at 2-8°C. DO NOT FREEZE. This product is photosensitive and should be protected from light. Shelf life: one year from despatch.

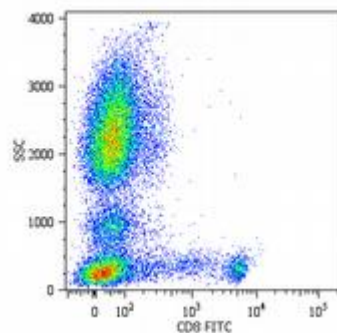
For research and in vitro use only. Not for diagnostic or therapeutic work.

Material Safety Datasheets are available at www.acris-antibodies.com or on request.

Antibody Hotline - Technical Questions - Antibody Location Service
Free Call: 0800-2274746 (Germany only) - www.acris-antibodies.com

- General References:**
1. Devine L, Thakral D, Nag S, Dobbins J, Hodsdon ME, Kavathas PB: Mapping the binding site on CD8 beta for MHC class I reveals mutants with enhanced binding. *J Immunol.* 2006 Sep 15;177(6):3930-8.
 2. Pang DJ, Hayday AC, Bijlmakers MJ.: CD8 Raft localization is induced by its assembly into CD8alpha beta heterodimers, Not CD8alpha alpha homodimers. *J Biol Chem.* 2007 May 4;282(18):13884-94.
 3. van den Berg HA, Wooldridge L, Laugel B, Sewell AK: Coreceptor CD8-driven modulation of T cell antigen receptor specificity. *J Theor Biol.* 2007 Nov 21;249(2):395-408.
 4. Horejsí V. et al.: Monoclonal antibodies against human leucocyte antigens. I. Antibodies against beta-2-microglobulin, immunoglobulin kappa light chains, HLA-DR-like antigens, T8 antigen, T1 antigen, a monocyte antigen, and a pan-leucocyte antigen. *Folia Biol. (Praha)* 32, 12 (1986).
 5. Leukocyte Typing III., McMichael A. J. et al (Eds.), Oxford University Press (1987).
 6. Horejsí V, Angelisova P, Bazil V, Kristofova H, Stoyanov S, Stefanova I, Hausner P, Vosecký M, Hilgert I: Monoclonal antibodies against human leucocyte antigens. II. Antibodies against CD45 (T200), CD3 (T3), CD43, CD10 (CALLA), transferrin receptor (T9), a novel broadly expressed 18-kDa antigen (MEM-43) and a novel antigen of restricted expression (MEM-74). *Folia Biol (Praha).* 1988;34(1):23-34.
 7. Drbal K, Moertelmaier M, Holzhauser C, Muhammad A, Fuertbauer E, Howorka S, Hinterberger M, Stockinger H, Schütz GJ: Single-molecule microscopy reveals heterogeneous dynamics of lipid raft components upon TCR engagement. *Int Immunol.* 2007 May;19(5):675-84.
 8. Brdicková N, Brdicka T, Angelisová P, Horváth O, Spicka J, Hilgert I, Paces J, Simeoni L, Kliche S, Merten C, Schraven B, Horejsí V: LIME: a new membrane Raft-associated adaptor protein involved in CD4 and CD8 coreceptor signaling. *J Exp Med.* 2003 Nov 17;198(10):1453-62.
 9. Estefanía E, Flores R, Gómez-Lozano N, Aguilar H, López-Botet M, Vilches C: Human KIR2DL5 is an inhibitory receptor expressed on the surface of NK and T lymphocyte subsets. *J Immunol.* 2007 Apr 1;178(7):4402-10.
 10. Linnebacher M, Wienck A, Boeck I, Klar E: Identification of an MSI-H tumor-specific cytotoxic T cell epitope generated by the (-1) frame of U79260(FTO). *J Biomed Biotechnol.* 2010;2010:841451.

Pictures:



Surface staining of human peripheral blood cells with anti-human CD8 (MEM-31) FITC.

For research and in vitro use only. Not for diagnostic or therapeutic work.

Material Safety Datasheets are available at www.acris-antibodies.com or on request.

Antibody Hotline - Technical Questions - Antibody Location Service
Free Call: 0800-2274746 (Germany only) - www.acris-antibodies.com