

Monoclonal Antibody to CD10 / Neprilysin - PE

Alternate names:	Atriopeptidase, CALLA, Common acute lymphocytic leukemia antigen, EPN, Enkephalinase, MME, NEP, Neutral endopeptidase, Neutral endopeptidase 24.11
Catalog No.:	SM3006R
Quantity:	100 Tests
Background:	CD10 (neutral endopeptidase NEP, common acute lymphocytic leukemia antigen CALLA, membrane metallo-endopeptidase MME, enkephalinase) is a 100-kDa cell surface zinc metalloprotease cleaving peptide bonds on the N-terminus of hydrophobic amino acids and inactivating multiple physiologically active peptides. CD10 is expressed on various normal cell types, including lymphoid precursor cells, germinal center B lymphocytes, and some epithelial cells, and its expression level serves as a marker for diagnostics of many carcinomas. CD10 is also a differentiation antigen for early B-lymphoid progenitors in the B-cell differentiation pathway and has a key role in regulation of growth, differentiation and signal transduction of many cellular systems.
Uniprot ID:	P08473
NCBI:	NP_000893.2
GeneID:	4311
Host / Isotype:	Mouse / IgG1
Clone:	MEM-78
Immunogen:	NALM-6 human pre-B cell line
Format:	State: Liquid Ig fraction Purification: Size-exclusion chromatography Buffer System: Phosphate buffered saline (PBS) containing 15 mM sodium azide and 0.2% (w/v) high-grade protease free Bovine Serum Albumin (BSA) as a stabilizing agent Label: PE – Conjugated with R-Phycoerythrin under optimum conditions
Applications:	Suitable for Flow cytometry (use 20 μ l to label 10e6 cells or 100 μ l whole blood). Other applications not tested. Optimal dilutions of this antibody are dependent on conditions and should be determined by the user. Other applications not tested. Optimal dilutions are dependent on conditions and should be determined by the user.
Specificity:	The antibody reacts with CD10 antigen (CALLA - Common acute lymphatic leukemia antigen), a 100 kDa type II integral membrane protein. Species: Human. Other species not tested.
Storage:	Store the antibody undiluted at 4-8°C. DO NOT FREEZE! This product is photosensitive and should be protected from light. Should it contain a precipitate we recommend microcentrifugation before use. Shelf life: one year from despatch.

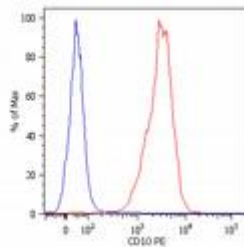
For research and in vitro use only. Not for diagnostic or therapeutic work.

Material Safety Datasheets are available at www.acris-antibodies.com or on request.

Antibody Hotline - Technical Questions - Antibody Location Service
Free Call: 0800-2274746 (Germany only) - www.acris-antibodies.com

- General References:**
1. Suzuki T, Ino K, Kikkawa F, Uehara C, Kajiyama H, Shibata K, Mizutani S: Neutral endopeptidase/CD10 expression during phorbol ester-induced differentiation of choriocarcinoma cells through the protein kinase C- and extracellular signal-regulated kinase-dependent signalling pathway. *Placenta*. 2002 Jul;23(6):475-82.
 2. Yada K, Kashima K, Daa T, Kitano S, Fujiwara S, Yokoyama S: Expression of CD10 in basal cell carcinoma. *Am J Dermatopathol*. 2004 Dec;26(6):463-71.
 3. Braham H, Trimeche M, Ziadi S, Mestiri S, Mokni M, Amara K, Hachana M, Sriha B, Korbi S: CD10 expression by fusiform stromal cells in nasopharyngeal carcinoma correlates with tumor progression. *Virchows Arch*. 2006 Aug;449(2):220-4.
 4. Dall'Era MA, True LD, Siegel AF, Porter MP, Sherertz TM, Liu AY: Differential expression of CD10 in prostate cancer and its clinical implication. *BMC Urol*. 2007 Mar 2;7:3.
 5. Horejsi V, Angelisova P, Bazil V, Kristofova H, Stoyanov S, Stefanova I, Hausner P, Vosecky M, Hilgert I.: Monoclonal antibodies against human leucocyte antigens. II. Antibodies against CD45 (T200), CD3 (T3), CD43, CD10 (CALLA), transferrin receptor (T9), a novel broadly expressed 18-kDa antigen (MEM-43) and a novel antigen of restricted expression (MEM-74). *Folia Biol (Praha)*. 1988;34(1):23-34.
 6. Leukocyte Typing IV., Knapp W. et al. (Eds.), Oxford University Press (1989).
 7. Leukocyte Typing V., Schlossman S. et al. (Eds.), Oxford University Press (1995).
 8. Angelisová P, Drbal K, Horejsí V, Cerný J: Association of CD10/neutral endopeptidase 24.11 with membrane microdomains rich in glycosylphosphatidylinositol-anchored proteins and Lyn kinase. *Blood*. 1999 Feb 15;93(4):1437-9.

Pictures:



Surface staining of NALM-6 human pre-B cell leukemia cell line with anti-human CD10 (MEM-78) PE. Total viable cells were used for analysis.

For research and in vitro use only. Not for diagnostic or therapeutic work.

Material Safety Datasheets are available at www.acris-antibodies.com or on request.

Antibody Hotline - Technical Questions - Antibody Location Service
Free Call: 0800-2274746 (Germany only) - www.acris-antibodies.com