

Monoclonal Antibody to Bromodeoxyuridine (BrdU) - Purified

Catalog No.:	SM3005P
Quantity:	0.1 mg
Concentration:	1.0 mg/ml
Background:	Bromodeoxyuridine (BrdU) is a thymidine analog which is selectively incorporated into the DNA of proliferating cells to provide a marker for the DNA being replicated. The number of proliferating cells can then be detected in cell lysates, tissue sections or suspensions using an antibody specific for the BrdU.
Host / Isotype:	Mouse / IgG1
Clone:	MoBu-1
Immunogen:	5-bromodeoxyuridine conjugated with hemocyanine
Format:	State: Liquid purified Ig fraction (> 95% pure by PAGE) Purification: Protein A Affinity Chromatography Buffer System: PBS, pH 7.4, with 15 mM Sodium Azide as preservative
Applications:	Flow Cytometry: 1-2 µg/ml. Immunocytochemistry: 2 µg/ml. Immunohistochemistry on Frozen and Paraffin Sections. Other applications not tested. Optimal dilutions are dependent on conditions and should be determined by the user.
Specificity:	The antibody reacts specifically with BrdU incorporated into DNA during S-phase of a cell cycle. The antibody MoBu-1 is also useful for detecting proliferating cells by Flow Cytometry or Immunofluorescence staining. It reacts also specifically with 5-Bromouridine (BrdU).
Storage:	Store undiluted at 2-8°C for one month or (in aliquots) at -20°C for longer. Avoid repeated freezing and thawing. Shelf life: One year from despatch.
Product Citation:	1. Sabina Tahirovic, Farida Hellal, Dorothee Neukirchen, Robert Hindges, Boyan K. Garvalov, Kevin C. Flynn, Theresia E. Stradal, Anna Chrostek-Grashoff, Cord Brakebusch, and Frank Bradke Rac1 Regulates Neuronal Polarization through the WAVE Complex J. Neurosci., May 2010; 30: 6930-6943.
General References:	1. Ashby J, Tinwell H, Soames A, Foster J.: Induction of hyperplasia and increased DNA content in the uterus of immature rats exposed to coumestrol. Environ Health Perspect. 1999 Oct;107(10):819-22. 2. Soames AR, Lavender D, Foster JR, Williams SM, Wheeldon EB: Image analysis of bromodeoxyuridine (BrdU) staining for measurement of S-phase in rat and mouse liver. J Histochem Cytochem. 1994 Jul;42(7):939-44.

For research and in vitro use only. Not for diagnostic or therapeutic work.

Material Safety Datasheets are available at www.acris-antibodies.com or on request.

Antibody Hotline - Technical Questions - Antibody Location Service
Free Call: 0800-2274746 (Germany only) - www.acris-antibodies.com

3. Buckiova D, Kubinova L, Soukup A, Jelinek R, Brown NA.: Hyperthermia in the chick embryo: HSP and possible mechanisms of developmental defects. *Int J Dev Biol.* 1998 Jul;42(5):737-40.
4. Stanek D, Kiss T, Raska I.: Pre-ribosomal RNA is processed in permeabilised cells at the site of transcription. *Eur J Cell Biol.* 2000 Mar;79(3):202-7.

Pictures:

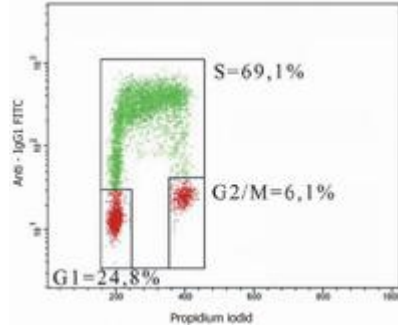


Figure 1. Flow cytometry analysis of 5-Bromodeoxyuridin (BrdU) incorporation in CEM Human acute lymphoblastic leukemia cell line using purified anti-5-Bromodeoxyuridin (MoBu-1) (detection by Goat anti-Mouse IgG1 FITC). The individual cell cycle phases (S-, G1-, G2/M-phase) are indicated in the figure.

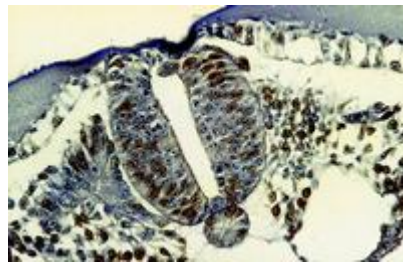


Figure 2. Immunohistochemistry staining of bromodeoxyuridine-labeled cells (chick embryo; paraffin-embedded sections) with anti-5-Bromodeoxyuridine (MoBu-1).

For research and in vitro use only. Not for diagnostic or therapeutic work.

Material Safety Datasheets are available at www.acris-antibodies.com or on request.

Antibody Hotline - Technical Questions - Antibody Location Service
Free Call: 0800-2274746 (Germany only) - www.acris-antibodies.com