

## Monoclonal Antibody to CD161 / KLRB1 - PE

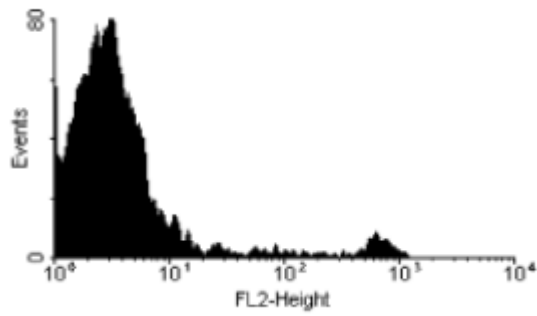
<b>Alternate names:</b>	C-type lectin domain family 5 member B, CLEC5B, HNKRP1a, Killer cell lectin-like receptor subfamily B member 1, NKR-P1A, Natural killer cell surface protein P1A
<b>Catalog No.:</b>	SM293R
<b>Quantity:</b>	100 Tests
<b>Background:</b>	CD161 is a 60kD glycoprotein expressed on rat NK cells and T cell subpopulations.
<b>Uniprot ID:</b>	<a href="#">Q12918</a>
<b>NCBI:</b>	<a href="#">NP_002249.1</a>
<b>GeneID:</b>	<a href="#">3820</a>
<b>Host / Isotype:</b>	Mouse / IgG1
<b>Clone:</b>	10/78
<b>Immunogen:</b>	Purified splenic NK cells from the LEW rat strain. Spleen cells from immunised BALB/c mice were fused with cells of the mouse X63.Ag8653 myeloma cell line.
<b>Format:</b>	<b>State:</b> Lyophilized purified IgG <b>Purification:</b> Affinity chromatography on Protein G <b>Buffer System:</b> PBS, pH7.4 containing 0.09% Sodium Azide and 1% Bovine Serum Albumin <b>Label:</b> PE – R. Phycoerythrin (RPE) <b>Reconstitution:</b> Restore with 1 ml distilled water
<b>Applications:</b>	Flow Cytometry: Neat - 1/10; Use 10µl of the suggested working dilution to label 10e6 cells in 100µl. Other applications not tested. Optimal dilutions are dependent on conditions and should be determined by the user.
<b>Specificity:</b>	This antibody recognises the CD161 protein (also known as NKR-PI). This antibody competes with clone 3.2.3 for binding to antigen. <b>Species:</b> Rat. Other species not tested.
<b>Storage:</b>	Prior to and following reconstitution store the antibody at 2-8°C. DO NOT FREEZE! This product is photosensitive and should be protected from light. Shelf life: one year from despatch.
<b>General References:</b>	1. Sedgwick, J.D. et al. (1998) Central Nervous system microglial cell activation and proliferation follows direct interaction with Tissue-infiltrating T Cell Blasts. J. Immunol. 160: 5320-5330.

**For research and in vitro use only. Not for diagnostic or therapeutic work.**

Material Safety Datasheets are available at [www.acris-antibodies.com](http://www.acris-antibodies.com) or on request.

Antibody Hotline - Technical Questions - Antibody Location Service  
Free Call: 0800-2274746 (Germany only) - [www.acris-antibodies.com](http://www.acris-antibodies.com)

Pictures:



SM293R (MOUSE ANTI RAT CD161:RPE) staining of rat splenocytes.