

Monoclonal Antibody to CD43 / Leukosialin - FITC

Alternate names:	Galactoglycoprotein, Leukocyte sialoglycoprotein, SPN, Sialophorin
Catalog No.:	SM271F
Quantity:	0.1 mg
Concentration:	0.1 mg/ml
Background:	CD43 is a 95kD heavily glycosylated glycoprotein expressed by all leucocytes with the exception of B lymphocytes.
Uniprot ID:	P13838
NCBI:	10116
Host / Isotype:	Mouse / IgG1
Clone:	W3/13
Immunogen:	Rat thymocyte membrane preparation. Spleen cells from immunised BALB/c mice were fused with cells of the mouse NS1 myeloma cell line.
Format:	State: Liquid purified IgG Buffer System: PBS, pH 7.4 containing 0.09% Sodium Azide and 1% Bovine Serum Albumin Label: FITC – Fluorescein Isothiocyanate Isomer 1
Applications:	Flow cytometry. Other applications not tested. Optimal dilutions are dependent on conditions and should be determined by the user.
Specificity:	This antibody recognises the CD43 cell surface antigen, also known as leukosialin and sialophorin. Species: Rat. Other species not tested.
Storage:	Store the antibody undiluted at 2-8°C for one month or (in aliquots) at -20°C for longer. Avoid repeated freezing and thawing. This product is photosensitive and should be protected from light. Shelf life: one year from despatch.
General References:	1. Brown, W.R.A. et al. (1981) Identification of a glycoprotein-like molecule at the cell surface of rat thymocytes. <i>Nature</i> . 289: 456-460. 2. Barclay, A. N. (1981) The localization of populations of lymphocytes defined by monoclonal antibodies in rat lymphoid tissues. <i>Immunology</i> . 42:593-600 3. Forbes, R. D. C. et al. (1983) Leukocyte subsets in first-set rat cardiac allograft rejection. <i>Transplantation</i> . 36 (6):681-686 4. Jung, S. et al. (1994) Therapeutic effect of transforming growth factor-beta 2 on actively induced EAN but not on adoptive transfer EAN. <i>Immunology</i> . 83:545-551. 5. Bataller, R. et al. (2003) Prolonged infusion of angiotensin II into normal rats induces

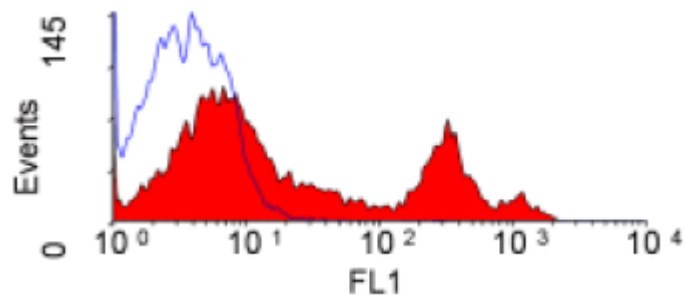
For research and in vitro use only. Not for diagnostic or therapeutic work.

Material Safety Datasheets are available at www.acris-antibodies.com or on request.

Antibody Hotline - Technical Questions - Antibody Location Service
Free Call: 0800-2274746 (Germany only) - www.acris-antibodies.com

stellate cell activation and proinflammatory events in liver. *Am. J. Physiol. Gastrointest. Liver Physiol.* 285:G642-651

Pictures:



SM271F staining of rat splenocytes.

For research and in vitro use only. Not for diagnostic or therapeutic work.

Material Safety Datasheets are available at www.acris-antibodies.com or on request.

Antibody Hotline - Technical Questions - Antibody Location Service
Free Call: 0800-2274746 (Germany only) - www.acris-antibodies.com