

Monoclonal Antibody to CD5 - FITC

Alternate names:	CD5, LEU1, Lymphocyte antigen T1/Leu-1, T-cell surface glycoprotein CD5
Catalog No.:	SM258F
Quantity:	0.1 mg
Concentration:	0.1 mg/ml
Background:	CD5 is a 69kD glycoprotein expressed by T cells, thymocytes and a subset of B cells.
Uniprot ID:	P51882
NCBI:	NP_062168.1
GeneID:	54236
Host / Isotype:	Mouse / IgG1
Clone:	OX-19
Immunogen:	Rat thymocyte glycoproteins. Spleen cells from immunised BALB/c mouse were fused with cells of the NS1 mouse myeloma cell line.
Format:	State: Liquid purified IgG fraction. Purification: Ion Exchange Chromatography Buffer System: PBS, pH 7.4 containing 0.09% Sodium Azide as preservative and 1% BSA as stabilizer. Label: FITC – Fluorescein Isothiocyanate Isomer 1
Applications:	Flow Cytometry. Other applications not tested. Optimal dilutions are dependent on conditions and should be determined by the user.
Specificity:	This antibody recognises the CD5 cell surface antigen. OX-19 has been reported as being suitable for use on periodate-lysine paraformaldehyde (PLP) fixed paraffin embedded tissue. Species: Rat. Other species not tested.
Storage:	Store the antibody undiluted at 2-8°C for one month or (in aliquots) at -20°C for longer. This product is photosensitive and should be protected from light. Avoid repeated freezing and thawing. Shelf life: one year from despatch.
General References:	1. Dallman, M.J. et al. (1982) The roles of host and donor cells in the rejection of skin allografts by T celldeprived rats injected with syngeneic T cells. Eur. J. Immunol. 12: 511-518. 2. Dallman, M.J. et al. (1984) MRC OX-19: A monoclonal antibody that labels rat T lymphocytes and augments in vitro proliferative responses. Eur. J. Immunol. 14: 260-267 3. Huitinga, I. et al. (1995) Macrophages in T cell line-mediated, demyelinating, and chronic

For research and in vitro use only. Not for diagnostic or therapeutic work.

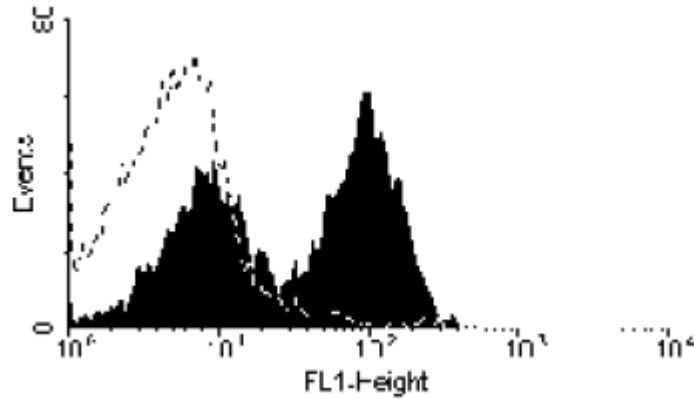
Material Safety Datasheets are available at www.acris-antibodies.com or on request.

Antibody Hotline - Technical Questions - Antibody Location Service
Free Call: 0800-2274746 (Germany only) - www.acris-antibodies.com

relapsing experimental autoimmune encephalomyelitis in Lewis rats. Clin. Exp. Immunol. 100:344-351

4. Whiteland, J.L. et al. (1995) Immunohistochemical Detection of T-Cell Subsets and other Leucocytes in Paraffin-embedded Rat and Mouse Tissues with Monoclonal Antibodies. J. Histochem. Cytochem. 43: 313-320

Pictures:



SM258F/FX/FS (Mouse Anti RAT CD5:FITC) staining of rat splenocytes.

For research and in vitro use only. Not for diagnostic or therapeutic work.

Material Safety Datasheets are available at www.acris-antibodies.com or on request.

Antibody Hotline - Technical Questions - Antibody Location Service
Free Call: 0800-2274746 (Germany only) - www.acris-antibodies.com