

Monoclonal Antibody to CD223 / LAG3 - PE

Alternate names:	FDC, LAG-3, Lymphocyte activation gene 3 protein
Catalog No.:	SM2270RT
Quantity:	25 Tests
Background:	CD223 is a 70kD activation-induced cell surface molecule. Murine CD223 is expressed on activated CD4 positive and CD8 positive alpha/beta T lymphocytes and a subset of natural killer (NK) cells. CD223 binds to MHC class II molecules with high affinity and is reported to negatively regulate T cell homeostasis and T cell expansion.
Uniprot ID:	Q61790
NCBI:	NP_032505.1
GeneID:	16768
Host / Isotype:	Rat / IgG1
Clone:	C9B7W
Immunogen:	Murine CD223 Ig fusion protein. Cells from immunised Lewis rats were fused with cells of the Sp/20 myeloma cell line.
Format:	State: Lyophilized purified IgG fraction. Purification: Affinity Chromatography on Protein G. Buffer System: PBS, pH 7.4 containing 0.09% Sodium Azide as preservative and 1% BSA as stabilizer. Label: PE – R. Phycoerythrin (RPE) Reconstitution: Restore with 1.0 ml distilled water
Applications:	Flow Cytometry: Use 10 µl of neat-1/5 diluted antibody to label 10e6 cells in 100 µl. The Fc region of monoclonal antibodies may bind non-specifically to cells expressing low affinity fc receptors. Other applications not tested. Optimal dilutions are dependent on conditions and should be determined by the user.
Specificity:	This antibody recognises lymphocyte activation gene-3 (LAG-3), that is also referred to as CD223. Clone C9B7W recognises an epitope within the D2 domain of CD223. The antibody is reported to block the in vitro function of murine LAG-3 but studies suggest that the antibody does not block binding of LAG-3 to MHC class II. We recommend the use of SM2270LE for this purpose. Species: Mouse. Other species not tested.

For research and in vitro use only. Not for diagnostic or therapeutic work.

Material Safety Datasheets are available at www.acris-antibodies.com or on request.

Antibody Hotline - Technical Questions - Antibody Location Service
Free Call: 0800-2274746 (Germany only) - www.acris-antibodies.com

Storage:

Prior to and following reconstitution store the antibody at 2-8°C.

DO NOT FREEZE!

This product is photosensitive and should be protected from light.

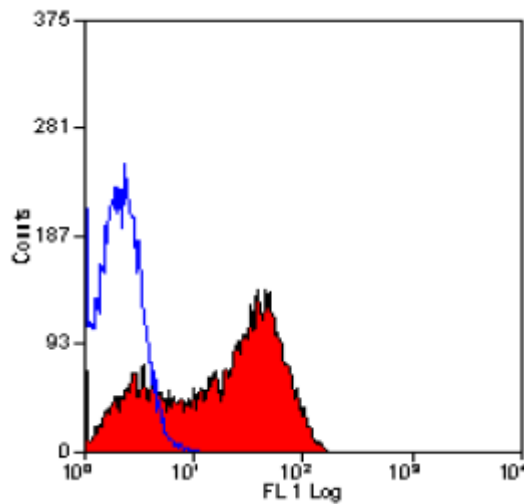
Shelf life: one year from despatch.

General References:

1. Workman, C.J. et al. (2002) Phenotypic analysis of the murine CD4-related glycoprotein, CD223 (LAG-3). Eur. J. Immunol. 32:2255-2263.

2. Workman, C.J. et al. (2005) Negative Regulation of T cell Homeostasis by Lymphocyte Activation gene-3 (CD223). J. Immunol.174:688-695.

Pictures:



Staining of CD223 transfected cells with Rat Anti Mouse CD223:RPE (SM2270R/RT)

For research and in vitro use only. Not for diagnostic or therapeutic work.

Material Safety Datasheets are available at www.acris-antibodies.com or on request.

Antibody Hotline - Technical Questions - Antibody Location Service
Free Call: 0800-2274746 (Germany only) - www.acris-antibodies.com