

## Monoclonal Antibody to CD52 / CAMPATH-1 - FITC

<b>Alternate names:</b>	CDw52, Cambridge pathology 1 antigen, Epididymal secretory protein E5, HE5
<b>Catalog No.:</b>	SM2135F
<b>Quantity:</b>	0.1 mg
<b>Concentration:</b>	0.1 mg/ml
<b>Background:</b>	The CD52 antigen is a remarkably small peptide that is heavily glycosylated, and attached to the cell surface membrane via a GPI link. The apparent molecular mass of the antigen on SDS-PAGE is 25-29kD. CD52 is expressed at high density by lymphocytes, monocytes, eosinophils, thymocytes and macrophages. It is expressed by most lymphoid derived malignancies, although expression on myeloma cells is variable.
<b>Uniprot ID:</b>	<a href="#">P31358</a>
<b>NCBI:</b>	<a href="#">NP_001794.2</a>
<b>GeneID:</b>	<a href="#">1043</a>
<b>Host / Isotype:</b>	Rat / IgG2b
<b>Clone:</b>	YTH34.5
<b>Format:</b>	<b>State:</b> Liquid purified IgG fraction. <b>Purification:</b> Affinity Chromatography on Protein A. <b>Buffer System:</b> PBS containing 0.09% Sodium Azide as preservative and 1% Bovine Serum Albumin as stabilizer. <b>Label:</b> FITC – Fluorescein Isothiocyanate Isomer 1
<b>Applications:</b>	Flow Cytometry (Neat): Use 10 ul of the suggested working dilution to label 10e6 cells or 100 ul whole blood. Other applications not tested. Optimal dilutions are dependent on conditions and should be determined by the user.
<b>Specificity:</b>	This antibody reacts with the human CD52 antigen, also known as CAMPATH-1. Humanised versions of CAMPATH-1 specific antibodies are currently in clinical trials for the treatment of a range of lymphoid malignancies. <b>Species:</b> Human and Rhesus Monkey. Other species not tested.
<b>Storage:</b>	Store the antibody undiluted at 2-8°C for one month or (in aliquots) at -20°C for longer. Avoid repeated freezing and thawing. Shelf life: one year from despatch.
<b>General References:</b>	1. Hale, G. et al. (1998) Improving the Outcome of Bone Marow Transplantation by using CD52 Monoclonal Antibodies to prevent graft-versus-host disease and graft rejection. Blood 92: 4581-4590. 2. Salisbury, J.R. et al. (1994) Immunohistochemical analysis of CDw52 antigen expression

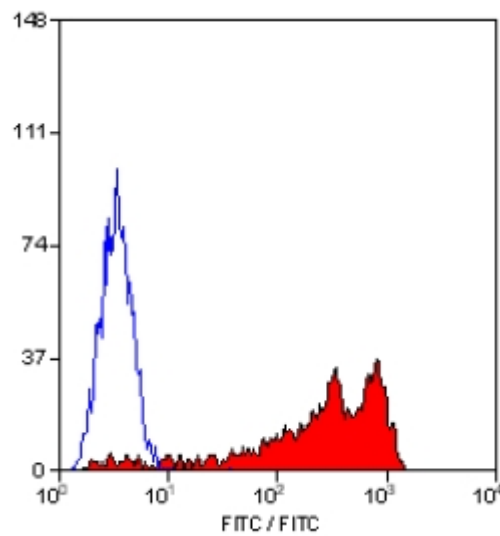
**For research and in vitro use only. Not for diagnostic or therapeutic work.**

Material Safety Datasheets are available at [www.acris-antibodies.com](http://www.acris-antibodies.com) or on request.

Antibody Hotline - Technical Questions - Antibody Location Service  
Free Call: 0800-2274746 (Germany only) - [www.acris-antibodies.com](http://www.acris-antibodies.com)

in non-hodgkins lymphomas. J. Clin. Path. 47: 313 - 317.

Pictures:



Staining of human peripheral blood lymphocytes with RAT ANTI HUMAN CD52:FITC (SM2135F)

---

**For research and in vitro use only. Not for diagnostic or therapeutic work.**

Material Safety Datasheets are available at [www.acris-antibodies.com](http://www.acris-antibodies.com) or on request.

Antibody Hotline - Technical Questions - Antibody Location Service  
Free Call: 0800-2274746 (Germany only) - [www.acris-antibodies.com](http://www.acris-antibodies.com)