

Monoclonal Antibody to CD200R - PE

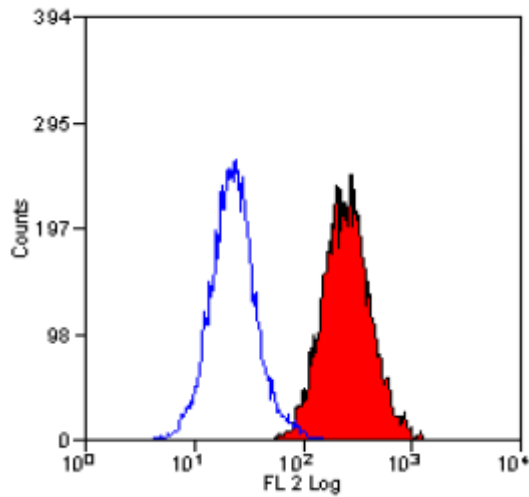
Alternate names:	CD200 Receptor 1, CD200 cell surface glycoprotein receptor, CD200R1, CRTR2, Cell surface glycoprotein CD200 receptor 1, Cell surface glycoprotein OX2 receptor 1, MOX2R, OX2R
Catalog No.:	SM2095RT
Quantity:	25 Tests
Concentration:	0.1 mg/ml
Background:	In mouse CD200R is expressed primarily by peripheral blood monocytes and neutrophils, but also by other leucocytes including Tlymphocytes and mast cells. Studies suggest that CD200-CD200R interaction may be involved in the control of myeloid cellular function.
Uniprot ID:	Q9ES57
NCBI:	NP_067300.1
GeneID:	57781
Host / Isotype:	Rat / IgG2a
Clone:	OX-110
Immunogen:	Fusion protein mCD200RCD4d3+4.
Format:	State: Lyophilized purified IgG fraction. Purification: Affinity Chromatography on Protein G. Buffer System: PBS, pH7.4 containing 0.09% Sodium Azide and 1% Bovine Serum Albumin Label: PE – R. Phycoerythrin (RPE) Reconstitution: Restore with 1 ml distilled water
Applications:	Flow Cytometry: The Fc region of monoclonal antibodies may bind non-specifically to cells expressing low affinity fc receptors. Other applications not tested. Optimal dilutions are dependent on conditions and should be determined by the user.
Specificity:	This antibody recognises CD200R, a cell surface glycoprotein (also known as OX2R). Species: Mouse. Other species not tested.
Storage:	Store the antibody undiluted at 2-8°C. DO NOT FREEZE! This product is photosensitive and should be protected from light. Shelf life: one year from despatch.
General References:	1. Wright. G.J. et al. (2003) Characterization of the CD200 Receptor family in mice and humans and their interactions with CD200. J. Immunol. 171:3034-3046.

For research and in vitro use only. Not for diagnostic or therapeutic work.

Material Safety Datasheets are available at www.acris-antibodies.com or on request.

Antibody Hotline - Technical Questions - Antibody Location Service
Free Call: 0800-2274746 (Germany only) - www.acris-antibodies.com

Pictures:



Staining of mouse peripheral blood granulocytes with RAT ANTI MOUSE CD200R: RPE (SM2095R).

For research and in vitro use only. Not for diagnostic or therapeutic work.

Material Safety Datasheets are available at www.acris-antibodies.com or on request.

Antibody Hotline - Technical Questions - Antibody Location Service
Free Call: 0800-2274746 (Germany only) - www.acris-antibodies.com