

## Monoclonal Antibody to CD200R - FITC

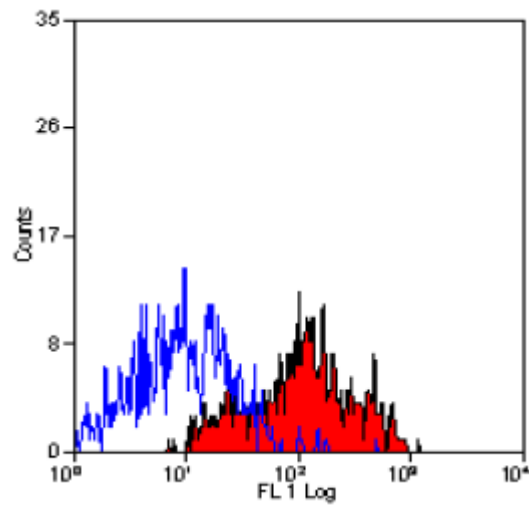
<b>Alternate names:</b>	CD200 Receptor 1, CD200 cell surface glycoprotein receptor, CD200R1, CRTR2, Cell surface glycoprotein CD200 receptor 1, Cell surface glycoprotein OX2 receptor 1, MOX2R, OX2R
<b>Catalog No.:</b>	SM2095FX
<b>Quantity:</b>	0.5 mg
<b>Concentration:</b>	0.5 mg/ml
<b>Background:</b>	In mouse CD200R is expressed primarily by peripheral blood monocytes and neutrophils but also by other leucocytes including Tlymphocytes and mast cells. Studies suggest that CD200-CD200R interaction may be involved in the control of myeloid cellular function.
<b>Uniprot ID:</b>	<a href="#">Q9ES57</a>
<b>NCBI:</b>	<a href="#">NP_067300.1</a>
<b>GeneID:</b>	<a href="#">57781</a>
<b>Host / Isotype:</b>	Rat / IgG2a
<b>Clone:</b>	OX-110
<b>Immunogen:</b>	Fusion protein mCD200RCD4d3+4.
<b>Format:</b>	<b>State:</b> Liquid purified IgG <b>Purification:</b> Affinity chromatography on Protein G <b>Buffer System:</b> PBS, pH7.4 containing 0.09% Sodium Azide and 1% Bovine Serum Albumin <b>Label:</b> FITC – Fluorescein Isothiocyanate Isomer 1
<b>Applications:</b>	Flow Cytometry: 1/10 - 1/20; Use 10µl of the suggested working dilution to label 10e6 cells in 100µl; The Fc region of monoclonal antibodies may bind non-specifically to cells expressing low affinity Fc receptors. Other applications not tested. Optimal dilutions are dependent on conditions and should be determined by the user.
<b>Specificity:</b>	This antibody recognises CD200R, a cell surface glycoprotein (also known as OX2R). <b>Species:</b> Mouse. Other species not tested.
<b>Storage:</b>	Store the antibody undiluted at 2-8°C for one month or (in aliquots) at -20°C for longer. Avoid repeated freezing and thawing. This product is photosensitive and should be protected from light. Shelf life: one year from despatch.
<b>General References:</b>	1. Wright. G.J. et al. (2003) Characterization of the CD200 Receptor family in mice and humans and their interactions with CD200. J. Immunol. 171:3034-3046.

**For research and in vitro use only. Not for diagnostic or therapeutic work.**

Material Safety Datasheets are available at [www.acris-antibodies.com](http://www.acris-antibodies.com) or on request.

Antibody Hotline - Technical Questions - Antibody Location Service  
Free Call: 0800-2274746 (Germany only) - [www.acris-antibodies.com](http://www.acris-antibodies.com)

Pictures:



Staining of mouse peritoneal macrophages with RAT ANTI MOUSE CD200R: FITC (SM2095FX).

---

**For research and in vitro use only. Not for diagnostic or therapeutic work.**

Material Safety Datasheets are available at [www.acris-antibodies.com](http://www.acris-antibodies.com) or on request.

Antibody Hotline - Technical Questions - Antibody Location Service  
Free Call: 0800-2274746 (Germany only) - [www.acris-antibodies.com](http://www.acris-antibodies.com)