

Monoclonal Antibody to MHC Class II DQ/DR (polymorphic) - FITC

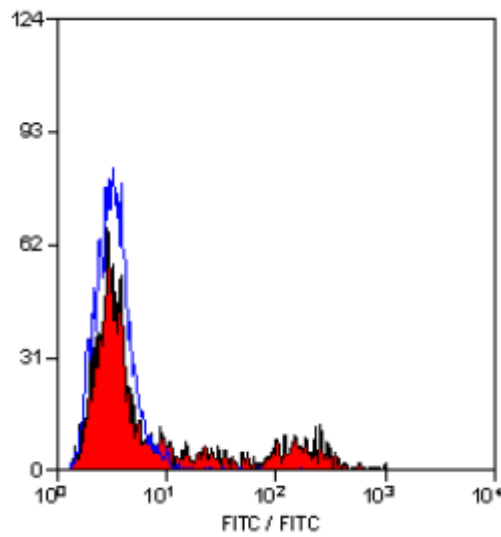
Catalog No.:	SM2081F
Quantity:	0.1 mg
Concentration:	0.1 mg/ml
Background:	The expression of ovine MHC class II molecules is restricted to B cells, activated T cells, monocytes, macrophages, dendritic cells and some endothelial and epithelial cells.
Host / Isotype:	Mouse / IgG1
Clone:	49.1
Format:	State: Liquid purified IgG Purification: Affinity chromatography on Protein G Buffer System: PBS, pH 7.4 containing 0.09% Sodium Azide and 1% Bovine Serum Albumin Label: FITC – Fluorescein Isothiocyanate Isomer 1
Applications:	Flow Cytometry: 1/10; Use 10µl of the suggested working dilution to label 1 x 10 ⁶ cells in 100µl. Other applications not tested. Optimal dilutions are dependent on conditions and should be determined by the user.
Specificity:	This antibody recognises a polymorphic epitope on MHC class II DQ and DR molecules. In recent work, this clone was found to recognise MHC class II transfectants DQ - T28.1. DR - T8.1. DR - T31.3, but not DQ - T26.2 (Ballingall, K. et al. 1995) Species: Sheep, Bovine, Goat, Human. Other species not tested.
Storage:	Store the antibody undiluted at 2-8°C for one month or (in aliquots) at -20°C for longer. Avoid repeated freezing and thawing. This product is photosensitive and should be protected from light. Shelf life: one year from despatch.
General References:	1. Puri, N. et al. (1987) Monoclonal antibodies to sheep MHC class I and class II molecules: biochemical characterization of three class I gene products and four distinct subpopulations of class II molecules. <i>Vet. Immunol. Immunopathol.</i> 15: 59 - 86. 2. Puri, N. et al. (1987) Sheep MHC II class molecules II. Identification and characterization of four distinct subsets of sheep MHC class II molecules. <i>Immunology.</i> 62: 575 - 580. 3. Puri, N. et al. (1987) Monoclonal antibodies to sheep MHC class II molecules recognize all HLA-D or subsets of HLA-D region products. <i>Hum. Immunol.</i> 20: 195 - 207. 4. Ballingall, K. et al. (1995) Analysis of the fine specificities of sheep major histocompatibility complex class II - specific monoclonal antibodies using mouse L - cell transfectants. <i>Anim. Genet.</i> 26: 79-84.

For research and in vitro use only. Not for diagnostic or therapeutic work.

Material Safety Datasheets are available at www.acris-antibodies.com or on request.

Antibody Hotline - Technical Questions - Antibody Location Service
Free Call: 0800-2274746 (Germany only) - www.acris-antibodies.com

Pictures:



Staining of sheep peripheral blood lymphocytes with MOUSE ANTI OVINE MHC CLASS II DQ/DR (POLYMORPHIC) (SM2081F).

For research and in vitro use only. Not for diagnostic or therapeutic work.

Material Safety Datasheets are available at www.acris-antibodies.com or on request.

Antibody Hotline - Technical Questions - Antibody Location Service
Free Call: 0800-2274746 (Germany only) - www.acris-antibodies.com