

## Monoclonal Antibody to CLEC7A / Dectin-1 - FITC

<b>Alternate names:</b>	BGR, Beta-glucan receptor, C-type lectin domain family 7 member A, C-type lectin superfamily member 12, CLECSF12, DC-associated C-type lectin 1, DECTIN1, Dendritic cell-associated C-type lectin 1
<b>Catalog No.:</b>	SM2052FS
<b>Quantity:</b>	50 µg
<b>Concentration:</b>	0.1 mg/ml
<b>Background:</b>	As a major leucocyte receptor for beta-glucan this molecule may have a key role in the immunomodulatory effects of beta-glucans and in the host response to fungal pathogens. Recent work has shown that Dectin-1 may stimulate reactive oxygen production in macrophages via the protein tyrosine kinase known as Syk.
<b>Uniprot ID:</b>	<a href="#">Q6QLQ4</a>
<b>NCBI:</b>	<a href="#">NP_064392.2</a>
<b>GeneID:</b>	<a href="#">56644</a>
<b>Host / Isotype:</b>	Rat / IgG2b
<b>Clone:</b>	2A11
<b>Immunogen:</b>	Dectin-1 transfected NIH3T3 cells and recombinant soluble Dectin-1.
<b>Format:</b>	<b>State:</b> Liquid purified IgG fraction. <b>Purification:</b> Affinity Chromatography on Protein G. <b>Buffer System:</b> PBS, pH 7.4 containing 0.09% Sodium Azide as preservative and 1% BSA as stabilizer. <b>Label:</b> FITC – Fluorescein Isothiocyanate Isomer 1
<b>Applications:</b>	Flow Cytometry. Other applications not tested. Optimal dilutions are dependent on conditions and should be determined by the user.
<b>Specificity:</b>	Recognises Murine beta-Glucan Receptor (Dectin-1). Dectin-1 is predominantly expressed by cells of the monocyte/macrophage and neutrophil lineages, but also at lower levels by dendritic cells and a subpopulation of T cells. This antibody inhibits the binding of zymosan to macrophages via the beta-glucan receptor. The low endotoxin version SM2025LE is recommended for Functional Studies. <b>Species:</b> Mouse. Other species not tested.

**For research and in vitro use only. Not for diagnostic or therapeutic work.**

Material Safety Datasheets are available at [www.acris-antibodies.com](http://www.acris-antibodies.com) or on request.

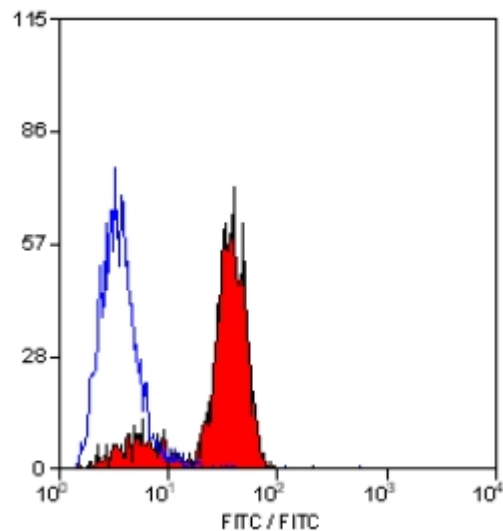
Antibody Hotline - Technical Questions - Antibody Location Service  
Free Call: 0800-2274746 (Germany only) - [www.acris-antibodies.com](http://www.acris-antibodies.com)

**Storage:**

Store the antibody undiluted at 2-8°C for one month or (in aliquots) at -20°C for longer. This product is photosensitive and should be protected from light. Should this product contain a precipitate we recommend microcentrifugation before use. Avoid repeated freezing and thawing. Shelf life: one year from despatch.

**General References:**

1. Brown, G. D. et al. (2002) Dectin-1 is a major beta-glucan receptor on macrophages. *J. Exp. Med.* 196:407-412.
2. Taylor, P. R. et al. (2002) The beta-glucan receptor, Dectin-1 is predominantly expressed on the surface of cells of the monocyte/macrophage and neutrophil lineages. *J. Immunol.* 169:3876-3882.
3. Reid, D.M. et al. (2004) Expression of the beta-glucan receptor, Dectin-1, on murine leukocytes in situ correlates with its function in pathogen recognition and reveals potential roles in leukocyte interactions. *J. Leuk. Biol.* 76:86-94.
4. Underhill, D.M. et al. (2005) Dectin-1 activates Syk tyrosine kinase in a dynamic subset of macrophages for reactive oxygen production. *Blood* 106:2543-2550.

**Pictures:**

Staining of mouse peripheral blood granulocytes with Rat Anti Mouse Beta Glucan Receptor:FITC (SM2052FS).

**For research and in vitro use only. Not for diagnostic or therapeutic work.**

Material Safety Datasheets are available at [www.acris-antibodies.com](http://www.acris-antibodies.com) or on request.

Antibody Hotline - Technical Questions - Antibody Location Service  
Free Call: 0800-2274746 (Germany only) - [www.acris-antibodies.com](http://www.acris-antibodies.com)