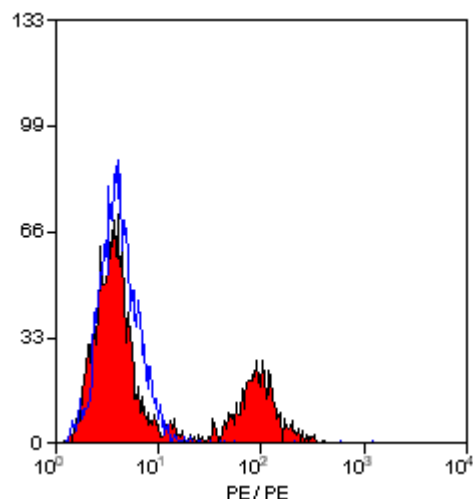


## Monoclonal Mouse Antibody to Chicken CD8a - FITC

**Catalog No.:** SM2033F  
**Quantity/Conc.:** 0.1 mg / 0.1 mg/ml  
**Clone:** 11-39  
**Immunogen:** Chicken T-cells  
**Host/Isotype:** Mouse IgG1  
**Format:** This antibody is supplied as liquid, Protein G affinity purified IgG fraction in PBS pH7.4 with 0.09% Sodium Azide as preservative and 1% BSA as stabilizer.



Staining of sheep peripheral blood lymphocytes with MOUSE ANTI OVINE MHC CLASS II DQ/DR:RPE

**Applications:** Flow Cytometry (Neat - 1:5, use 10ul to label  $10^6$  cells in 100ul). Other applications not tested. Optimal dilutions of this antibody are dependent on conditions and should be determined by the user.

**Specificity:** This antibody recognizes the alpha chain of the chicken CD8 homologue, a 33-35kD cell surface protein. CD8 is expressed as either alpha/alpha homodimers or alpha/beta heterodimers on a subpopulation of T cells and NK cells. Clone 11-39 recognizes all polymorphic forms of chicken CD8 alpha. Other species not tested.

**Storage:** Store the antibody at 4-8°C for one month or at -20°C for longer. Avoid repeated freezing and thawing. Shelf life: one year from despatch.

**References:** 1. Luhtala, M *et al.* (1997). Polymorphism of chicken CD8- alpha, but not CD8-beta. Immunogenetics. 46: 396 - 401.

SM2033F/CH0405

**For research and *in vitro* use only. Not for diagnostic or therapeutic work.**  
**Material Safety Datasheets are available at [www.acris-antibodies.com](http://www.acris-antibodies.com) or on request.**

Antibody Hotline • Technical Questions • Antibody Location Service  
Free Call: 0800-2274746 (Germany only)  
[service@acris-antibodies.de](mailto:service@acris-antibodies.de)

[www.acris-antibodies.com](http://www.acris-antibodies.com)