

Monoclonal Antibody to CD150 / SLAMF1 - PE

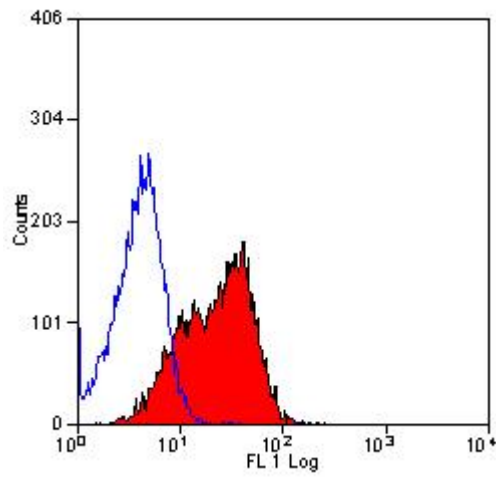
Alternate names:	CDw150, Ipo-3, Signaling lymphocytic activation molecule, Slam
Catalog No.:	SM2026RT
Quantity:	25 Tests
Concentration:	0.1 mg/ml
Background:	Murine CD150 is a 75kDa cell surface glycoprotein that is expressed on T-cells and B-cells, and has been shown to be upregulated on activated T-cells and stimulated macrophages. Reports suggest that the extracellular domain of CD150 is the receptor for the measles virus and acts as a co-activator on T-cells and B-cells.
Uniprot ID:	Q9QUM4
NCBI:	NP_038758.2
GeneID:	27218
Host / Isotype:	Rat / IgG1
Clone:	9D1
Immunogen:	CHO cells stably transfected with mouse CD150
Format:	State: Lyophilized IgG fraction Purification: Protein G affinity chromatography Buffer System: PBS, pH 7.4, with 0.09% Sodium Azide as preservative and 1% BSA as stabilizer Label: PE – R. Phycoerythrin (RPE) Reconstitution: Restore with 1 ml distilled water.
Applications:	Flow cytometry (use 10 µl of neat antibody to label 10e6 cells in 100 µl). Other applications not tested. Optimal dilutions are dependent on conditions and should be determined by the user.
Specificity:	This antibody recognizes murine CD150.
Add. Information:	Clone 9D1 is reported to have functional activity (1). We recommend the use of SM2026A for this purpose.
Storage:	Prior to and following reconstitution store at 2-8°C. DO NOT FREEZE. This product is photosensitive and should be protected from light. Shelf life: one year from despatch.
General References:	1. Howie D. et al. (2002). The role of SAP in murine CD150 (SLAM) - mediated T-cell proliferation and interferon gamma production. Blood. 100:2899-2907.

For research and in vitro use only. Not for diagnostic or therapeutic work.

Material Safety Datasheets are available at www.acris-antibodies.com or on request.

Antibody Hotline - Technical Questions - Antibody Location Service
Free Call: 0800-2274746 (Germany only) - www.acris-antibodies.com

Pictures:



Staining of mouse thymus with rat anti mouse CD150-RPE (SM2026R)

For research and in vitro use only. Not for diagnostic or therapeutic work.

Material Safety Datasheets are available at www.acris-antibodies.com or on request.

Antibody Hotline - Technical Questions - Antibody Location Service
Free Call: 0800-2274746 (Germany only) - www.acris-antibodies.com