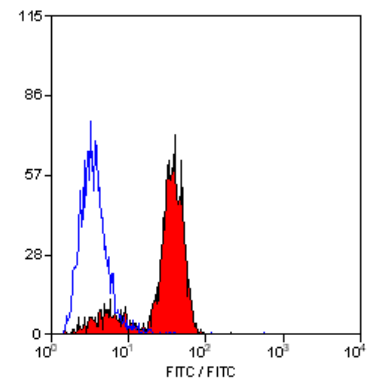


Monoclonal Antibody to Beta Glucan Receptor - FITC

Catalog No.:	SM2025F
Quantity/Conc.:	0.1 mg / 0.1mg/ml IgG
Clone:	2A11
Host/Isotype:	Rat IgG2b
Format:	This antibody is supplied as liquid, Protein G affinity purified immunoglobulin fraction, conjugated to Fluorescein Isothiocyanate Isomer 1 (FITC) in PBS buffer with 1% BSA as stabilizer and 0.09% sodium azide as preservative.
Applications:	Flow cytometry (use 10 µl of neat – 1/10 diluted antibody to label 10 ⁶ cells in 100 µl). Other applications not tested. Optimal dilutions of this antibody are dependent on conditions and should be determined by the user.
Specificity:	This antibody recognises murine beta-glucan receptor, also known as Dectin-1. Dectin-1 is predominantly expressed by cells of the monocytes / macrophage and neutrophil lineages, but also at lower levels by dendritic cells and a subpopulation of T cells. As a major leucocyte receptor for beta-glucan this molecule may have a key role in the immunomodulatory effects of beta-glucans and in the host response to fungal pathogens. This antibody inhibits the binding of zymosan to macrophages via the beta-glucan receptor.
Storage:	Store the antibody at 4°C for one month or at –20°C for longer. This product is photosensitive and should be protected from light. Avoid repeated freezing and thawing. Shelf life: one year from despatch.
References:	<ol style="list-style-type: none">1. Brown, G. D. <i>et al.</i> (2002). Dectin-1 is a major beta-glucan receptor on macrophages. <i>J. Exp. Med.</i> 196:407-412.2. Taylor, P. R. <i>et al.</i> (2002). The beta-glucan receptor, Dectin-1 is predominantly expressed on the surface of cells of the monocytes / macrophage and neutrophil lineages. <i>J. Immunol.</i> 169:3876-3882.



Staining of mouse peripheral blood granulocytes with RAT ANTI MOUSE BETA GLUCAN RECEPTOR:FITC (SM2025F).

SM2025F/PB1104

For research and *in vitro* use only. Not for diagnostic or therapeutic work.
Material Safety Datasheets are available at www.acris-antibodies.com or on request.

Antibody Hotline • Technical Questions • Antibody Location Service
0800-2274746
service@acris-antibodies.de

www.acris-antibodies.com