

## Monoclonal Antibody to CD226 / DNAM1 - PE

<b>Alternate names:</b>	DNAM-1, DNAX accessory molecule 1
<b>Catalog No.:</b>	SM2023R
<b>Quantity:</b>	100 Tests
<b>Background:</b>	CD226 is a 65kD glycoprotein, also known as DNAM1 (DNAX accessory molecule-1). CD226 is broadly expressed on T-cells, NK cells, platelets, monocytes and a subset of B cells. CD226 is also expressed by a subset of CD3 positive thymocytes.
<b>Uniprot ID:</b>	<a href="#">Q15762</a>
<b>NCBI:</b>	<a href="#">NP_006557.2</a>
<b>GeneID:</b>	<a href="#">10666</a>
<b>Host / Isotype:</b>	Mouse / IgG1
<b>Clone:</b>	DX11
<b>Immunogen:</b>	Human cytotoxic T lymphocyte clone. Spleen cells from immunised BALB/c mouse were fused with cells of the Sp2/0 myeloma cell line.
<b>Format:</b>	<b>State:</b> Lyophilized purified IgG fraction <b>Purification:</b> Affinity Chromatography on Protein G <b>Buffer System:</b> PBS, pH7.4 containing 0.09% Sodium Azide as preservative, 5% sucrose and 1.0% BSA as stabilizer. <b>Label:</b> PE – R. Phycoerythrin (RPE) <b>Reconstitution:</b> Restore with 0.25 ml distilled water
<b>Applications:</b>	<b>Flow Cytometry:</b> Use 10 µl of neat antibody to label 10e6 cells in 100 µl. Other applications not tested. Optimal dilutions are dependent on conditions and should be determined by the user.
<b>Specificity:</b>	This antibody recognises CD226. Clone DX11 is reported to inhibit T- and NK cell mediated cytotoxicity against tumour cell targets and to block TNF alpha and IFN gamma secretion by alloantigen-specific T-cells. We recommend the use of SM2023A for functional studies. <b>Species:</b> Human. Other species not tested.
<b>Storage:</b>	Store the antibody undiluted at 2-8°C. <b>DO NOT FREEZE!</b> This product is photosensitive and should be protected from light. Shelf life: one year from despatch.
<b>General References:</b>	1. Shibuya, A. et al. (1996) DNAM-1, a novel adhesion molecule involved in the cytolytic function of T lymphocytes. <i>Immunity</i> . 4: 573 - 581. 2. Shibuya, A. et al. (1998) Protein kinase C is involved in the regulation of both signaling

**For research and in vitro use only. Not for diagnostic or therapeutic work.**

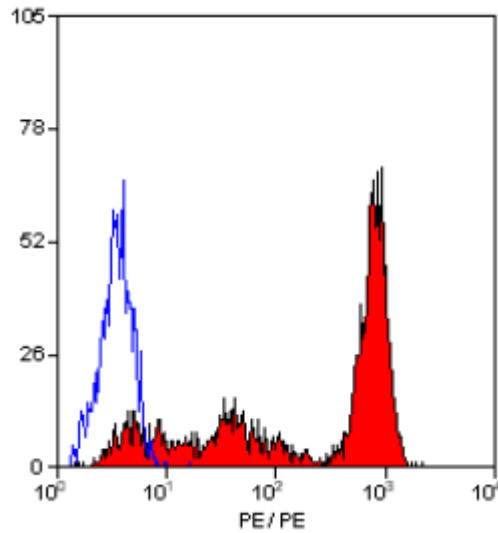
Material Safety Datasheets are available at [www.acris-antibodies.com](http://www.acris-antibodies.com) or on request.

Antibody Hotline - Technical Questions - Antibody Location Service  
Free Call: 0800-2274746 (Germany only) - [www.acris-antibodies.com](http://www.acris-antibodies.com)

and adhesion mediated by DNAX Accessory molecule-1 receptor. J. Immunol. 161. 1671 - 1676.

3. Kojima, H. et al. (2003) CD226 mediates platelet and megakaryocytic cell adhesion to vascular endothelial cells. J. Biol. Chem. 278 (38): 36748 - 36753.

Pictures:



Staining of human peripheral blood lymphocytes with MOUSE ANTI HUMAN CD226 -RPE

**For research and in vitro use only. Not for diagnostic or therapeutic work.**

Material Safety Datasheets are available at [www.acris-antibodies.com](http://www.acris-antibodies.com) or on request.

Antibody Hotline - Technical Questions - Antibody Location Service  
Free Call: 0800-2274746 (Germany only) - [www.acris-antibodies.com](http://www.acris-antibodies.com)