

## Monoclonal Antibody to CD101 - PE

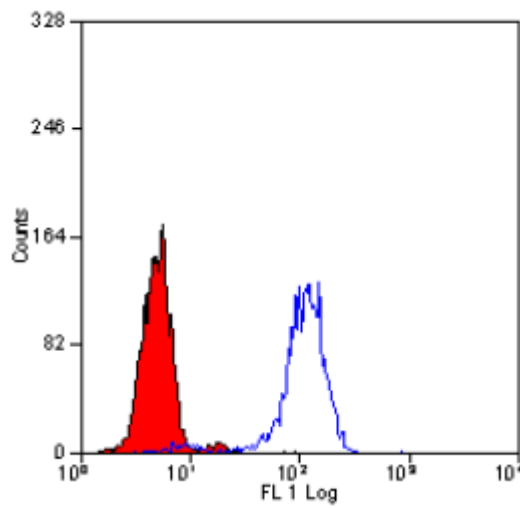
<b>Alternate names:</b>	Cell surface glycoprotein V7, EWI-101, EWI101, Glu-Trp-Ile EWI motif-containing protein 101, IGSF2, Immunoglobulin superfamily member 2, V7
<b>Catalog No.:</b>	SM1927R
<b>Quantity:</b>	100 Tests
<b>Background:</b>	CD101 is a 140kD homodimeric cell surface glycoprotein expressed primarily by monocytes, granulocytes, dendritic cells and activated T lymphocytes. Studies suggest that CD101 plays a major role in the activation of T cells by skin dendritic cells.
<b>Uniprot ID:</b>	<a href="#">Q93033</a>
<b>NCBI:</b>	<a href="#">NP_004249.2</a>
<b>GeneID:</b>	<a href="#">9398</a>
<b>Host / Isotype:</b>	Mouse / IgG1
<b>Clone:</b>	BB27
<b>Immunogen:</b>	Human thymic clone B12.
<b>Format:</b>	<b>State:</b> Lyophilized purified IgG fraction. <b>Purification:</b> Affinity Chromatography on Protein G. <b>Buffer System:</b> PBS, pH7.4 containing 0.09% Sodium Azide as preservative and 1% Bovine Serum Albumin as stabilizer. <b>Label:</b> PE – R. Phycoerythrin (RPE) <b>Reconstitution:</b> Restore with 0.25 ml distilled water.
<b>Applications:</b>	Flow Cytometry: (Neat- 1/5) Use 10 µl of the suggested working dilution to label 10e6 cell in 100 µl. Other applications not tested. Optimal dilutions are dependent on conditions and should be determined by the user.
<b>Specificity:</b>	This antibody recognises CD101. Clone BB27 has been reported to inhibit allogeneic T-cell responses. <b>Species:</b> Human. Other species not tested.
<b>Storage:</b>	Prior to and following reconstitution store the antibody undiluted at 2-8°C. <b>DO NOT FREEZE!</b> This product is photosensitive and should be protected from light. Shelf life: One year from despatch.
<b>General References:</b>	1. Bagot, M. et al. (1997) CD101 is expressed by skin dendritic cells. Tissue Antigens. 50: 439-448.

**For research and in vitro use only. Not for diagnostic or therapeutic work.**

Material Safety Datasheets are available at [www.acris-antibodies.com](http://www.acris-antibodies.com) or on request.

Antibody Hotline - Technical Questions - Antibody Location Service  
Free Call: 0800-2274746 (Germany only) - [www.acris-antibodies.com](http://www.acris-antibodies.com)

Pictures:



Staining of human peripheral blood granulocytes with MOUSE ANTI HUMAN CD101: RPE (SM1927R / SM1927RT).

**For research and in vitro use only. Not for diagnostic or therapeutic work.**

Material Safety Datasheets are available at [www.acris-antibodies.com](http://www.acris-antibodies.com) or on request.

Antibody Hotline - Technical Questions - Antibody Location Service  
Free Call: 0800-2274746 (Germany only) - [www.acris-antibodies.com](http://www.acris-antibodies.com)