

Monoclonal Antibody to CD1a - FITC

Alternate names:	T-cell surface antigen T6/Leu-6, T-cell surface glycoprotein CD1a, T6/Leu-6, hTa1, hTa1 thymocyte antigen
Catalog No.:	SM1858F
Quantity:	0.1 mg
Concentration:	0.1 mg/ml
Background:	CD1a is a 49kD molecule expressed in association with beta 2 microglobulin. CD1a is expressed strongly by cortical thymocytes, and also by Langerhans cells and interdigitating cells.
Uniprot ID:	P06126
NCBI:	9606
Host / Isotype:	Mouse / IgG2a
Clone:	NA1/34-HLK
Immunogen:	Human thymocytes. Spleen cells from immunised BALB/c mice were fused with cells of the mouse NS1/1 Ag4.1 myeloma cell line.
Format:	State: Liquid purified IgG Purification: Affinity chromatography on Protein G. Buffer System: PBS, pH7.4 containing 0.09% Sodium Azide and 1% Bovine Serum Albumin Label: FITC – Fluorescein Isothiocyanate Isomer 1
Applications:	Flow cytometry: neat - 1/10; use 10 µl of the suggested working dilution to label 10e6 cells. Other applications not tested. Optimal dilutions are dependent on conditions and should be determined by the user.
Specificity:	This antibody recognises the CD1a cell surface glycoprotein. This product is routinely tested in flow cytometry on MOLT4 cells. Species: Human, Cynomolgus monkey, Dog. Other species not tested.
Storage:	Store the antibody undiluted at 2-8°C for one month or (in aliquots) at -20°C for longer. Avoid repeated freezing and thawing. This product is photosensitive and should be protected from light. Shelf life: one year from despatch.
General References:	1. McMichael, A. J. et al. (1979) A human thymocyte antigen defined by a hybrid myeloma monoclonal antibody. <i>Eur. J. Immunol.</i> 9: 205-210. 2. Poulter, L. W. et al. (1986) Discrimination of human macrophages and dendritic cells by means of monoclonal antibodies. <i>Scand. J. Immunol.</i> 24:351-357. 3. Galkowska, H. et al. (1996) Reactivity of antibodies directed against human antigens with surface markers on canine leucocytes. <i>Vet. Immunol. Immunopathol.</i> 53: 329-334.

For research and in vitro use only. Not for diagnostic or therapeutic work.

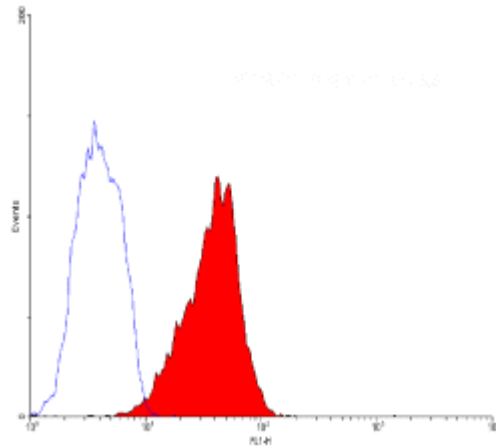
Material Safety Datasheets are available at www.acris-antibodies.com or on request.

Antibody Hotline - Technical Questions - Antibody Location Service
Free Call: 0800-2274746 (Germany only) - www.acris-antibodies.com

4. Yoshino, N. et al. (2000) Upgrading of flow cytometric analysis for absolute counts, cytokines and other antigenic molecules of Cynomolgus monkeys (*Macaca fascicularis*) by using anti-human cross reactive antibodies. *Exp. Anim.* 49: 97-110.

Pictures:

Staining of MOLT 4 cells with MOUSE ANTI HUMAN CD1a:FITC (SM1858F).



For research and in vitro use only. Not for diagnostic or therapeutic work.

Material Safety Datasheets are available at www.acris-antibodies.com or on request.

Antibody Hotline - Technical Questions - Antibody Location Service
Free Call: 0800-2274746 (Germany only) - www.acris-antibodies.com