

## Monoclonal Antibody to Leukotriene B4 receptor 1 - PE

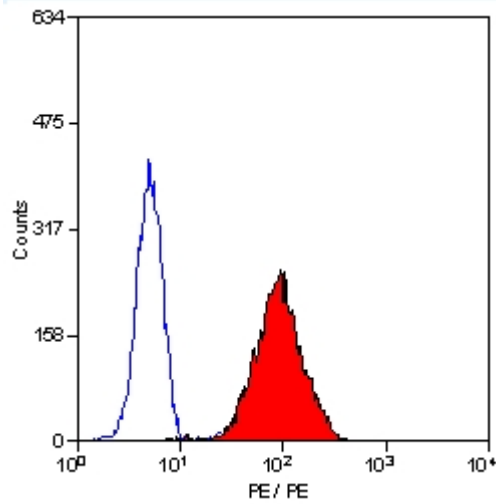
<b>Alternate names:</b>	BLT, BLT1, BLTR, CMKRL1, Chemoattractant receptor-like 1, G-protein coupled receptor 16, GPR16, LTB4-R 1, LTB4R, P2RY7, P2Y purinoceptor 7, P2Y7
<b>Catalog No.:</b>	SM1844RT
<b>Quantity:</b>	25 Tests
<b>Background:</b>	BLTR is expressed by peripheral blood granulocytes and is important in the pro-inflammatory response.
<b>Uniprot ID:</b>	<a href="#">Q15722</a>
<b>NCBI:</b>	<a href="#">NP_001137391.1</a>
<b>GeneID:</b>	<a href="#">1241</a>
<b>Host / Isotype:</b>	Mouse / IgG2a
<b>Clone:</b>	202/7B1
<b>Immunogen:</b>	HeLa cell transfectants expressing Human BLTR. Spleen cells from immunised Balb/c mice were fused with cells of the mouse SP2/0 myeloma cell line.
<b>Format:</b>	<b>State:</b> Lyophilized purified IgG fraction <b>Purification:</b> Affinity Chromatography on Protein G <b>Buffer System:</b> PBS containing 0.09% Sodium Azide as preservative and 1% BSA as stabilizer <b>Label:</b> PE – R. Phycoerythrin (RPE) <b>Reconstitution:</b> Restore with 0.25 ml distilled water.
<b>Applications:</b>	<b>Flow Cytometry:</b> Use Neat-1/2 diluted antibody to label 10e6 cells or 100 µl whole blood. Other applications not tested. Optimal dilutions are dependent on conditions and should be determined by the user.
<b>Specificity:</b>	This antibody recognises the BLTR molecule, the Leukotriene B4 Receptor.
<b>Species Reactivity:</b>	<b>Tested:</b> Human.
<b>Storage:</b>	Prior to and following reconstitution store the antibody at 2-8°C. <b>DO NOT FREEZE!</b> This product is photosensitive and should be protected from light. Shelf life: one year from despatch.
<b>General References:</b>	1. Pettersson, A. et al. (2000) First generation monoclonal antibodies identifying the human leukotriene B receptor-1. Biochem. Biophys. Res. Commun. 279: 520 - 525.

**For research and in vitro use only. Not for diagnostic or therapeutic work.**

Material Safety Datasheets are available at [www.acris-antibodies.com](http://www.acris-antibodies.com) or on request.

Antibody Hotline - Technical Questions - Antibody Location Service  
Free Call: 0800-2274746 (Germany only) - [www.acris-antibodies.com](http://www.acris-antibodies.com)

Pictures:



Staining of Human peripheral blood granulocytes with Mouse Anti Human BLTR:RPE (SM1844R/RT)

**For research and in vitro use only. Not for diagnostic or therapeutic work.**

Material Safety Datasheets are available at [www.acris-antibodies.com](http://www.acris-antibodies.com) or on request.

Antibody Hotline - Technical Questions - Antibody Location Service  
Free Call: 0800-2274746 (Germany only) - [www.acris-antibodies.com](http://www.acris-antibodies.com)