

Monoclonal Antibody to CD11c - PE

Alternate names:	CD11 antigen-like family member C, ITGAX, Integrin alpha-X, Leu M5, Leukocyte adhesion glycoprotein p150 95 alpha chain, Leukocyte adhesion receptor p150 95
Catalog No.:	SM1834RT
Quantity:	25 Tests
Concentration:	1.0 mg/ml
Background:	CD11c is a 150kD glycoprotein expressed by macrophages, monocytes, granulocytes and NK cells. The antigen is also expressed by hairy cell leukaemia cells. Ligands for CD11c are ICAM-1, iC3b, and fibrinogen. The molecule has a role in mediating adherence of granulocytes and monocytes to endothelium and fibrinogen.
Uniprot ID:	P20702
NCBI:	NP_000878.2
GeneID:	3687
Host / Isotype:	Mouse / IgG1
Clone:	BU15
Format:	State: Lyophilized purified IgG Buffer System: Contains 0.09% Sodium Azide and 2% Bovine Serum Albumin Label: PE – R. Phycoerythrin (RPE) Reconstitution: Restore with 1 ml distilled water
Applications:	Flow cytometry: Neat - 1/10; Use 10µl of the suggested working dilution to label 10e6 cells in 100µl. Other applications not tested. Optimal dilutions are dependent on conditions and should be determined by the user.
Specificity:	This antibody recognises the integrin alphax subunit. Species: Human, Cynomolgus monkey, Dog. Other species not tested.
Storage:	Prior to and following reconstitution store the antibody at 2-8°C. DO NOT FREEZE! This product is photosensitive and should be protected from light. Shelf life: one year from despatch.
General References:	1. Hogg, N. et al. (1986) The p150, 95 molecule is a marker of human mononuclear phagocytes: comparison with expression of class II molecules. Eur. J. Immunol. 16: 240 - 248. 2. Loike, J.D. et al. (1991) CD11c/CD18 on neutrophils recognizes a domain at the N terminus of the A alpha chain of fibrinogen. Proc. Natl. Acad. Sci. USA 88: 1044-1048. 3. Larson, R.S. and Springer, T.A. (1990) Structure and function of leukocyte integrins.

For research and in vitro use only. Not for diagnostic or therapeutic work.

Material Safety Datasheets are available at www.acris-antibodies.com or on request.

Antibody Hotline - Technical Questions - Antibody Location Service
Free Call: 0800-2274746 (Germany only) - www.acris-antibodies.com

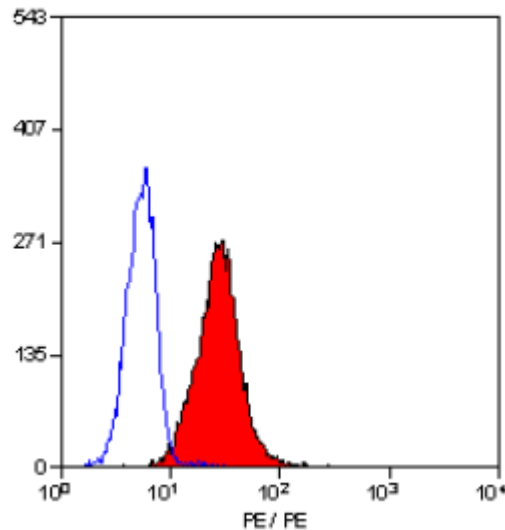
Immunol. Rev. 114: 181-217.

4. Sanchez-Madrid, F. and Corbi, A.L. (1992) Leukocyte integrins: structure, function and regulation of their activity. *Seminars Cell Biol.* 3: 199-210.

5. Yoshino, N. et al. (2000) Upgrading of flow cytometric analysis for absolute counts, cytokines and other antigenic molecules of Cynomolgus monkeys (*Macaca fascicularis*) by using anti-human cross-reactive antibodies. *Exp. Anim.* 49 (2): 97-110.

6. Trowald-Wigh, G. et al. (1993) Canine neutrophil adhesion proteins and Fc receptors in healthy dogs and dogs with adhesion protein deficiency, as studied by flow cytometry. *Vet. Immunol. Immunopathol.* 38: 297- 310.

Pictures:



Staining of human peripheral blood granulocytes with MOUSE ANTI HUMAN CD11c:RPE (SM1834R).

For research and in vitro use only. Not for diagnostic or therapeutic work.

Material Safety Datasheets are available at www.acris-antibodies.com or on request.

Antibody Hotline - Technical Questions - Antibody Location Service
Free Call: 0800-2274746 (Germany only) - www.acris-antibodies.com