

Monoclonal Antibody to CD282 / TLR2 - PE

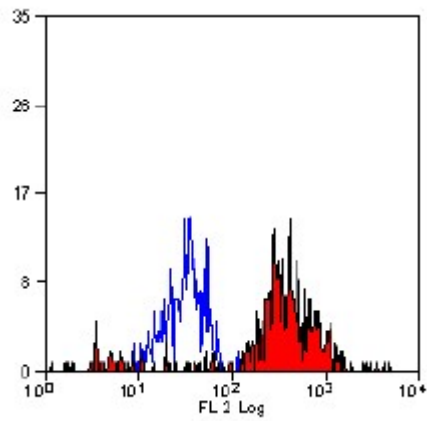
Alternate names:	Toll-like receptor 2
Catalog No.:	SM1826RT
Quantity:	25 Tests
Background:	TLR2 is a 90kD type 1 transmembrane protein that is primarily expressed by peripheral blood monocytes. TLR2, also known as CD282, is reported to respond to a diverse range of bacterial cell wall components, mediating the innate immune response in co-operation with MD-2.
Uniprot ID:	O60603
NCBI:	9606
Host / Isotype:	Mouse / IgG2a
Clone:	TLR2.3
Immunogen:	CHO cell line transfected with Human TLR2 (CD282). Spleen cells from immunised BALB/c mice were fused with cells of the NSO myeloma cell line.
Format:	State: Lyophilized purified IgG fraction. Purification: Affinity Chromatography on Protein G . Buffer System: PBS, pH 7.4, containing 0.09% Sodium Azide as preservative and 1% BSA as stabilizer. Label: PE – R. Phycoerythrin Reconstitution: Restore with 1.0 ml distilled water.
Applications:	Flow Cytometry: Use 10 µl of neat antibody to label 10e6 cells in 100 ul. Other applications not tested. Optimal dilutions are dependent on conditions and should be determined by the user.
Specificity:	Recognises toll-like receptor 2 (TLR2). Species: Human. Other species not tested.
Storage:	Store the antibody undiluted at 2-8°C before and following reconstitution. DO NOT FREEZE! This product is photosensitive and should be protected from light. Shelf life: one year from despatch.
General References:	1. Lien, E. et al. (1999) Toll-like receptor 2 functions as a pattern recognition receptor for diverse bacterial products. J. Biol. Chem. 274: 33419 - 25. 2. Flo, T. et al. (2001) Differential expression of Toll-like receptor 2 in human cells. J. Leukoc. Biol. 69: 474 - 481.

For research and in vitro use only. Not for diagnostic or therapeutic work.

Material Safety Datasheets are available at www.acris-antibodies.com or on request.

Antibody Hotline - Technical Questions - Antibody Location Service
Free Call: 0800-2274746 (Germany only) - www.acris-antibodies.com

Pictures:



Staining of human peripheral blood monocytes probed with Mouse anti Human TLR2-PE (SM1826R).

For research and in vitro use only. Not for diagnostic or therapeutic work.

Material Safety Datasheets are available at www.acris-antibodies.com or on request.

Antibody Hotline - Technical Questions - Antibody Location Service
Free Call: 0800-2274746 (Germany only) - www.acris-antibodies.com