

Monoclonal Antibody to CD45 / LCA (CD45RB) - Purified

Alternate names:	L-CA, Leukocyte common antigen, PTPRC, Receptor-type tyrosine-protein phosphatase C, T200
Catalog No.:	SM1797P
Quantity:	0.2 mg
Concentration:	1.0 mg/ml
Background:	CD45 is a family of single chain transmembrane glycoproteins consisting of at least four isoforms (220, 205, 190, 180 kDa) which share a common large intracellular domain. Their extracellular domains are heavily glycosylated. The different isoforms are produced by alternative messenger RNA splicing of three exons of a single gene on chromosome 1. CD45 is expressed on cells of the human hematopoietic lineage (including hematopoietic stem cells) with the exception of mature red cells. It is not detected on differentiated cells of other tissues. It is likely that CD45 plays an important role in signal transduction, inhibition or upregulation of various immunological functions. Antibodies recognising a common epitope on all of the isoforms are termed CD45 whilst those recognising only individual isoforms are termed CD45RA or CD45RO etc.
Uniprot ID:	P08575
NCBI:	NP_002829.2
GeneID:	5788
Host / Isotype:	Mouse / IgG1
Clone:	MEM-55
Format:	State: Liquid purified IgG Purification: Affinity chromatography on Protein A Buffer System: PBS containing 0.09% Sodium Azide
Applications:	Flow cytometry: 1/50 - 1/100; use 10 µl of the suggested working dilution to label 10e6 cells in 100µl. Immunoprecipitation. Immunohistochemistry on frozen sections. Immunohistochemistry on paraffin sections: 1/50 - 1/200; this product does not require protein digestion pre-treatment of paraffin sections. This product does not require antigen retrieval using heat treatment prior to staining of paraffin sections. Other applications not tested. Optimal dilutions are dependent on conditions and should be determined by the user.

For research and in vitro use only. Not for diagnostic or therapeutic work.

Material Safety Datasheets are available at www.acris-antibodies.com or on request.

Antibody Hotline - Technical Questions - Antibody Location Service
Free Call: 0800-2274746 (Germany only) - www.acris-antibodies.com

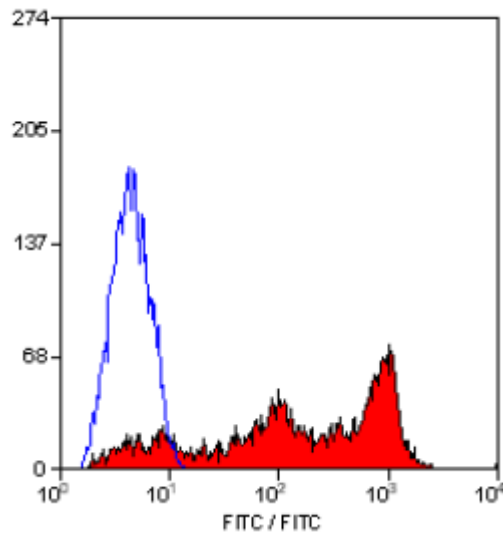
Specificity: This antibody recognises the isoform of the leucocyte common antigen encoded by exon B and stains B cells, most T cells and monocytes. Clone MEM55 immunoprecipitates bands of 190, 200 and 205kD.

Species: Human, Rhesus Monkey.
Other species not tested.

Storage: Store the antibody undiluted at 2-8°C for one month or (in aliquots) at -20°C for longer. Avoid repeated freezing and thawing.
Shelf life: one year from despatch.

General References: 1. Serra-Pages, C. et al. (1993) Tissue Antigens 42: 441.

Pictures:



Staining of human peripheral blood lymphocytes with MOUSE ANTI HUMAN CD45RB (SM1797P).

For research and in vitro use only. Not for diagnostic or therapeutic work.

Material Safety Datasheets are available at www.acris-antibodies.com or on request.

Antibody Hotline - Technical Questions - Antibody Location Service
Free Call: 0800-2274746 (Germany only) - www.acris-antibodies.com