

## Monoclonal Antibody to CD45 / LCA (CD45RA) - Purified

<b>Alternate names:</b>	L-CA, Leukocyte common antigen, PTPRC, Receptor-type tyrosine-protein phosphatase C, T200
<b>Catalog No.:</b>	SM1796PT
<b>Quantity:</b>	20 µg
<b>Concentration:</b>	1.0 mg/ml
<b>Background:</b>	CD45 is a complex molecule existing in a number of isoforms. Antibodies recognising a common epitope on all of these isoforms are termed CD45 whilst those recognising only individual isoforms are termed CD45RA or CD45RO etc.
<b>Uniprot ID:</b>	<a href="#">P08575</a>
<b>NCBI:</b>	<a href="#">NP_002829.2</a>
<b>GeneID:</b>	<a href="#">5788</a>
<b>Host / Isotype:</b>	Mouse / IgG1
<b>Clone:</b>	F8-11-13
<b>Immunogen:</b>	Human T lymphocytes. Spleen cells from immunised BALB/c mice were fused with cells of the mouse NS1 myeloma cell line.
<b>Format:</b>	<b>State:</b> Liquid purified IgG fraction. <b>Purification:</b> Affinity Chromatography on Protein G. <b>Buffer System:</b> PBS, pH 7.2 containing 0.09% Sodium Azide as preservative.
<b>Applications:</b>	Immunohistology on Paraffin (1/200). Immunohistology on Frozen. Flow Cytometry (1/50-1/100): Use 10 µl of the suggested working dilution to label 10e6 cells in 100 µl. Other applications not tested. Optimal dilutions are dependent on conditions and should be determined by the user.
<b>Specificity:</b>	This antibody recognises the human CD45RA cell surface antigen. Clone F8-11-13 reacts with the high molecular weight form of the leucocyte common antigen (LCA) expressed by B lymphocytes and a subset of T lymphocytes. <b>Species:</b> Human and Rhesus Monkey. Other species not tested.
<b>Storage:</b>	Store the antibody undiluted at 2-8°C for one month or (in aliquots) at -20°C for longer. Avoid repeated freezing and thawing. Shelf life: one year from despatch.
<b>General References:</b>	1. Dalchau, R. and Fabre, J.W. (1981) Identification with a monoclonal antibody of the predominantly B lymphocyte specific determinant of the human leucocyte common

**For research and in vitro use only. Not for diagnostic or therapeutic work.**

Material Safety Datasheets are available at [www.acris-antibodies.com](http://www.acris-antibodies.com) or on request.

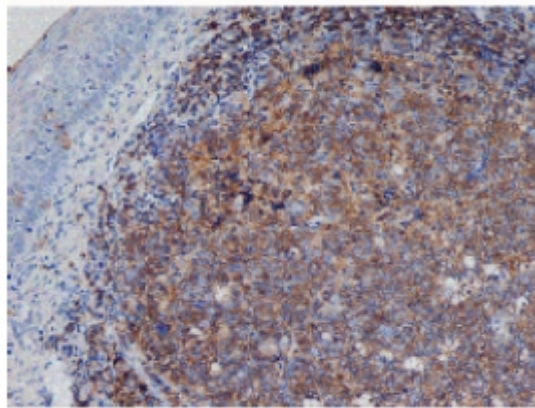
Antibody Hotline - Technical Questions - Antibody Location Service  
Free Call: 0800-2274746 (Germany only) - [www.acris-antibodies.com](http://www.acris-antibodies.com)

antigen: evidence for structural and possible functional diversity of the leucocyte common molecule. J. Exp. Med. 153: 753-765.

2. O'Grady, J. T. et al (1994) CD40 expression in Hodgkin's disease. Am. J. Pathol. 144: 21-26.

3. Franitza, S. et al. (2002) TGF-beta1 enhances SDF-1alpha-induced chemotaxis and homing of naive T cells by up-regulating CXCR4 expression and downstream cytoskeletal effector molecules. J. Immunol. 32: 193-202.

**Pictures:**



Staining of formalin fixed, paraffin embedded human tonsil with Mouse anti Human CD45RA (SM20PT).

---

**For research and in vitro use only. Not for diagnostic or therapeutic work.**

Material Safety Datasheets are available at [www.acris-antibodies.com](http://www.acris-antibodies.com) or on request.

Antibody Hotline - Technical Questions - Antibody Location Service  
Free Call: 0800-2274746 (Germany only) - [www.acris-antibodies.com](http://www.acris-antibodies.com)