

Monoclonal Antibody to CD45 / LCA - PE

Alternate names:	L-CA, Leukocyte common antigen, PTPRC, Receptor-type tyrosine-protein phosphatase C, T200
Catalog No.:	SM1795R
Quantity:	100 Tests
Background:	CD45 is a complex molecule existing in a number of isoforms. Antibodies recognising a common epitope on all of these isoforms are termed CD45 whilst those recognising only individual isoforms are termed CD45RA or CD45RO etc.
Uniprot ID:	P08575
NCBI:	NP_002829.2
GeneID:	5788
Host / Isotype:	Mouse / IgG2a
Clone:	F-10-89-4
Immunogen:	Human T lymphocytes
Format:	State: Lyophilized purified IgG fraction Purification: Ion exchange chromatography Buffer System: PBS, pH 7.4, containing 1% BSA as stabilizer and 0.09% sodium azide as preservative Label: PE – R. Phycoerythrin (RPE) Reconstitution: Restore with 1.0 ml distilled water.
Applications:	Flow cytometry: use 10 µl of neat antibody to label 10e6 cells or 100 µl whole blood. Other applications not tested. Optimal dilutions are dependent on conditions and should be determined by the user.
Specificity:	SM1795R recognises the human CD45 cell surface antigen, also known as the leucocyte common antigen. Clone F10-89-4 reacts with all forms of CD45 expressed by all haematopoietic cells, except erythrocytes, having a higher level of expression on lymphocytes than on granulocytes.
Add. Information:	This product is routinely tested in flow cytometry on human peripheral blood leucocytes.
Storage:	Prior to and following reconstitution store the antibody at 2-8°C. DO NOT FREEZE! Protect from light! Shelf life: one year from despatch.
General References:	1. Dalchau, R. et al. (1980) Monoclonal antibody to a human leucocyte specific membrane glycoprotein probably homologous to the leucocyte common antigen of the rat. Eur. J. Immunol. 10: 737-744. 2. Quenby, S et al. (1999) Pre-implantation endometrial leukocytes in women with recurrent

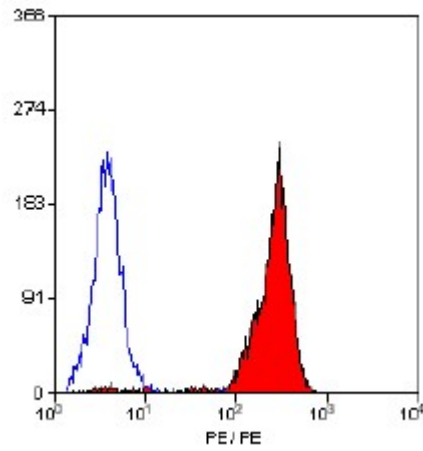
For research and in vitro use only. Not for diagnostic or therapeutic work.

Material Safety Datasheets are available at www.acris-antibodies.com or on request.

Antibody Hotline - Technical Questions - Antibody Location Service
Free Call: 0800-2274746 (Germany only) - www.acris-antibodies.com

miscarriage.
Human Reprod. 14(9):2386-2391.

Pictures:



Staining of human peripheral blood lymphocytes with Mouse anti Human CD45 - RPE (SM1795R)

For research and in vitro use only. Not for diagnostic or therapeutic work.

Material Safety Datasheets are available at www.acris-antibodies.com or on request.

Antibody Hotline - Technical Questions - Antibody Location Service
Free Call: 0800-2274746 (Germany only) - www.acris-antibodies.com