

## Monoclonal Antibody to CD45 / LCA - FITC

<b>Alternate names:</b>	L-CA, Leukocyte common antigen, PTPRC, Receptor-type tyrosine-protein phosphatase C, T200
<b>Catalog No.:</b>	SM1795F
<b>Quantity:</b>	0.1 mg
<b>Concentration:</b>	0.1 mg/ml
<b>Background:</b>	CD45 is a complex molecule existing in a number of isoforms.
<b>Uniprot ID:</b>	<a href="#">P08575</a>
<b>NCBI:</b>	<a href="#">NP_002829.2</a>
<b>GeneID:</b>	<a href="#">5788</a>
<b>Host / Isotype:</b>	Mouse / IgG2a
<b>Clone:</b>	F-10-89-4
<b>Immunogen:</b>	Human T lymphocytes. Spleen cells from immunised BALB/c mice were fused with cells of the mouse NS-1 myeloma cell line.
<b>Format:</b>	<b>Purification:</b> Affinity chromatography on Protein G <b>Buffer System:</b> PBS, pH7.4 containing 0.09% Sodium Azide and 1% Bovine Serum Albumin <b>Label:</b> FITC – Fluorescein Isothiocyanate Isomer 1
<b>Applications:</b>	Flow cytometry. Other applications not tested. Optimal dilutions are dependent on conditions and should be determined by the user.
<b>Specificity:</b>	This antibody recognises the human CD45 cell surface antigen, also known as the leucocyte common antigen (LCA). Antibodies recognising a common epitope on all of these isoforms are termed CD45 whilst those recognising only individual isoforms are termed CD45RA or CD45RO etc. Clone F10-89-4 reacts with all forms of CD45 expressed by all haematopoietic cells, except erythrocytes, having a higher level of expression on lymphocytes than on granulocytes. <b>Species:</b> Human. Other species not tested.
<b>Storage:</b>	Store the antibody undiluted at 2-8°C for one month or (in aliquots) at -20°C for longer. Avoid repeated freezing and thawing. This product is photosensitive and should be protected from light. Shelf life: one year from despatch.
<b>General References:</b>	1. Dalchau, R. et al. (1980) Monoclonal antibody to a human leucocyte specific membrane glycoprotein probably homologous to the leucocyte common antigen of the rat. Eur. J. Immunol. 10: 737-744. 2. Quenby, S et al. (1999) Pre-implantation endometrial leukocytes in women with recurrent

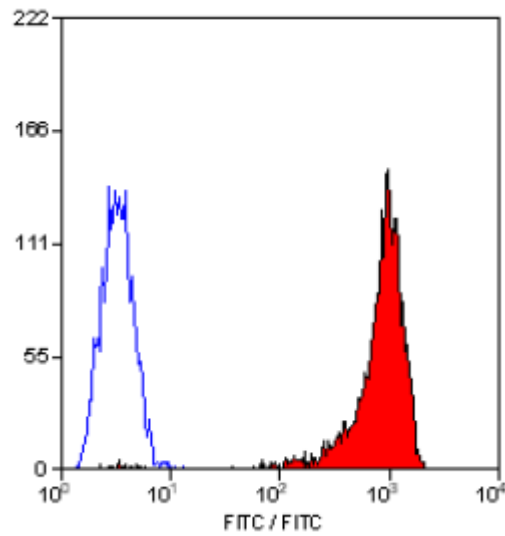
**For research and in vitro use only. Not for diagnostic or therapeutic work.**

Material Safety Datasheets are available at [www.acris-antibodies.com](http://www.acris-antibodies.com) or on request.

Antibody Hotline - Technical Questions - Antibody Location Service  
Free Call: 0800-2274746 (Germany only) - [www.acris-antibodies.com](http://www.acris-antibodies.com)

miscarriage. Human Reprod. 14(9):2386-2391.

Pictures:



Staining of human peripheral blood lymphocytes with MOUSE ANTI HUMAN CD45:FITC (SM1795F).

**For research and in vitro use only. Not for diagnostic or therapeutic work.**

Material Safety Datasheets are available at [www.acris-antibodies.com](http://www.acris-antibodies.com) or on request.

Antibody Hotline - Technical Questions - Antibody Location Service  
Free Call: 0800-2274746 (Germany only) - [www.acris-antibodies.com](http://www.acris-antibodies.com)