

## Monoclonal Antibody to CD21 - FITC

<b>Alternate names:</b>	C3DR, C3d receptor, CR2, Complement C3d receptor, Complement receptor type 2, Dendritic Cell Marker, EBV Receptor, Epstein-Barr virus receptor
<b>Catalog No.:</b>	SM1785FT
<b>Quantity:</b>	25 µg
<b>Concentration:</b>	0.1 mg/ml
<b>Background:</b>	CD21 also known as complement receptor 2 (CR2), C3d receptor or EBV receptor is a 140 kDa protein. CD21 is a glycosylated type I transmembrane protein consisting of an extracellular face of a series of 15 or 16 CCP domains. CD21 is the receptor for complement components C3d and iC3b as well as the Epstein-Barr virus (EBV) glycoprotein gp350/220. The soluble CD21 (sCD21) was shown to efficiently trigger CD23 signalling pathways in human monocytes. By inducing release of proinflammatory cytokines and upregulating expression of molecules involved in antigen presentation, sCD21 modulates critical monocyte functions that may be relevant to allergic and inflammatory disorders.
<b>Uniprot ID:</b>	<a href="#">P20023</a>
<b>NCBI:</b>	<a href="#">9606</a>
<b>Host / Isotype:</b>	Mouse / IgG1
<b>Clone:</b>	LB21
<b>Immunogen:</b>	Human IM9 cell line. Spleen cells from immunised BALB/c mice were fused with cells of the mouse Sp2/0 myeloma cell line.
<b>Format:</b>	<b>State:</b> Liquid purified IgG <b>Purification:</b> Ion exchange chromatography <b>Buffer System:</b> BPS, pH7.4 containing 0.09% Sodium Azide and 1% Bovine Serum Albumin <b>Label:</b> FITC – Fluorescein Isothiocyanate Isomer 1
<b>Applications:</b>	<b>Flow Cytometry:</b> Use 10 µl of neat-1/10 diluted antibody to label 10e6 cells or 100 µl whole blood. Other applications not tested. Optimal dilutions are dependent on conditions and should be determined by the user.
<b>Specificity:</b>	This antibody is a 145kD cell surface glycoprotein expressed by mature B cells and by follicular dendritic cells. The molecule acts as a receptor for complement component C3d, C3dg and iC3b, as well as for Epstein Barr Virus. <b>Species:</b> Human, Other species not tested.

**For research and in vitro use only. Not for diagnostic or therapeutic work.**

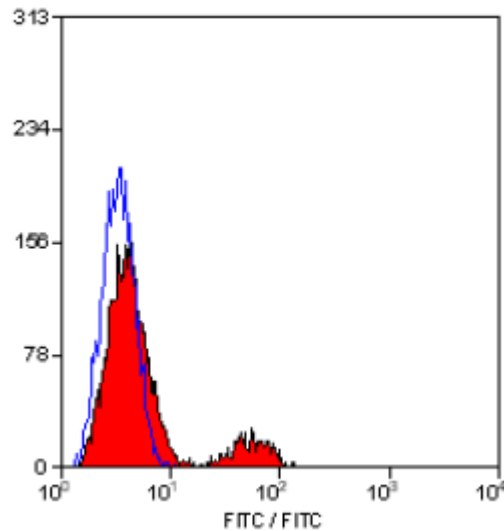
Material Safety Datasheets are available at [www.acris-antibodies.com](http://www.acris-antibodies.com) or on request.

Antibody Hotline - Technical Questions - Antibody Location Service  
Free Call: 0800-2274746 (Germany only) - [www.acris-antibodies.com](http://www.acris-antibodies.com)

**Storage:** Store the antibody undiluted at 2-8°C for one month or (in aliquots) at -20°C for longer. Avoid repeated freezing and thawing. This product is photosensitive and should be protected from light. Shelf life: one year from despatch.

**General References:** 1. Furukawa, Y. et al. (2000) Frequent reversible membrane damage in peripheral blood B cells in human T cell lymphotropic virus type I (HTLV-1)-associated myelopathy/tropical spastic paraparesis (HAM/TSP). Clin. Exp. Immunol. 120: 307-316.

**Pictures:**



Staining of human peripheral blood lymphocytes with Mouse Anti Human CD21-FITC (SM1785F/FT).

---

**For research and in vitro use only. Not for diagnostic or therapeutic work.**

Material Safety Datasheets are available at [www.acris-antibodies.com](http://www.acris-antibodies.com) or on request.

Antibody Hotline - Technical Questions - Antibody Location Service  
Free Call: 0800-2274746 (Germany only) - [www.acris-antibodies.com](http://www.acris-antibodies.com)