

Monoclonal Antibody to CD8 - FITC

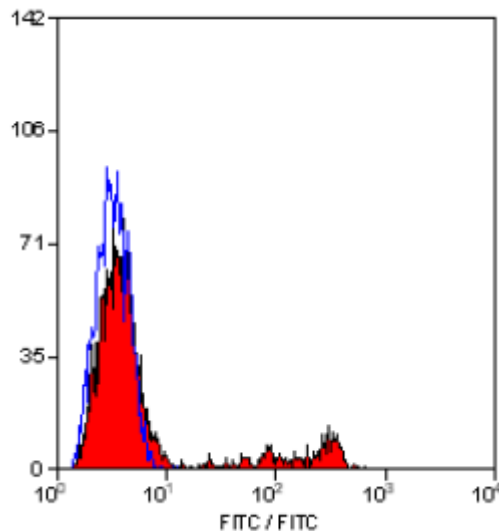
Alternate names:	CD8 alpha chain, CD8A, MAL, T-cell surface glycoprotein CD8 alpha chain, T-lymphocyte differentiation antigen T8/Leu-2
Catalog No.:	SM1784F
Quantity:	0.1 mg
Concentration:	0.1 mg/ml
Background:	CD8 is expressed by a subset of peripheral blood T cells which express cytotoxic/suppressor activity. It is also expressed weakly on NK cells. The CD8 antigen is a co-receptor for MHC Class I in conjunction with the T cell receptor, and is important in the selection process of CD8+ MHC Class I restricted T cells.
Uniprot ID:	P01732
NCBI:	NP_001759
GeneID:	925
Host / Isotype:	Mouse / IgG1
Clone:	LT8
Immunogen:	Normal Human peripheral blood lymphocytes. Remarks: Spleen cells from immunised BALB/c mice were fused with cells of the mouse X63.653 myeloma cell line.
Format:	State: Liquid purified IgG fraction. Purification: Ion Exchange Chromatography. Buffer System: PBS, pH 7.4 containing 0.09% Sodium Azide as preservative and 1% BSA as stabilizer Label: FITC – Fluorescein Isothiocyanate Isomer 1
Applications:	Flow Cytometry: Use 10 µl of Neat-1/5 diluted antibody to label 10e6 cells or cells or 100 µl Human whole blood. Other applications not tested. Optimal dilutions are dependent on conditions and should be determined by the user.
Specificity:	This antibody recognises the CD8 cell surface glycoprotein. Species: Human, Monkey, Rhesus Monkey. Other species not tested.
Storage:	Store the antibody undiluted at 2-8°C for one month or (in aliquots) at -20°C for longer. This product is photosensitive and should be protected from light. Avoid repeated freezing and thawing. Shelf life: one year from despatch.
General References:	1. Zarkesh-Esfahani, H. et al. (2001) High-dose Leptin activates human leukocytes via receptor expression on monocytes. J. Immunol. 167: 4593 - 4599.

For research and in vitro use only. Not for diagnostic or therapeutic work.

Material Safety Datasheets are available at www.acris-antibodies.com or on request.

Antibody Hotline - Technical Questions - Antibody Location Service
Free Call: 0800-2274746 (Germany only) - www.acris-antibodies.com

2. Manninen, A. et al. (2002) HIV-1 Nef interacts with inositol trisphosphate receptor to activate calcium signaling in T cells. *J. Exp.Med.* 195 (8): 1023 -1032.
3. Parnes, J.R. (1989) Molecular biology and function of CD4 and CD8. *Adv. Immunol.* 44: 265-311.
4. Kap, Y.S. et al. (2009) A monoclonal antibody selection for immunohistochemical examination of lymphoid tissues from non-human primates. *J Histochem Cytochem.* 57: 1159-67.
5. Hovden, A.O. et al. (2011) Maturation of monocyte derived dendritic cells with OK432 boosts IL-12p70 secretion and conveys strong T-cell responses. *BMC Immunol.* 12: 2.
6. Nelson, M. et al. (2010) Characterization of lethal inhalational infection with *Francisella tularensis* in the common marmoset (*Callithrix jacchus*). *J Med Microbiol.* 59: 1107-13.
7. Gibbings, D.J. et al. (2007) CD8 alpha is expressed by human monocytes and enhances Fc gamma R-dependent responses. *BMC Immunol.* 8: 12.
8. Junker, A. et al. (2007) Multiple sclerosis: T-cell receptor expression in distinct brain regions. *Brain.* 130: 2789-99.
9. Held, K. et al. (2011) Expression of HSV-1 encoded miRNAs in human trigeminal ganglia and their relation to local T-cell infiltrates. *J Virol.* Jul 27. [Epub ahead of print]

Pictures:

Staining of human peripheral blood lymphocytes with Mouse Anti Human CD8-FITC (SM1784F/FT).

For research and in vitro use only. Not for diagnostic or therapeutic work.

Material Safety Datasheets are available at www.acris-antibodies.com or on request.

Antibody Hotline - Technical Questions - Antibody Location Service
Free Call: 0800-2274746 (Germany only) - www.acris-antibodies.com