

Monoclonal Antibody to CD2 - PE

Alternate names:	Erythrocyte receptor, LFA-2, LFA-3 receptor, Rosette receptor, SRBC, T-cell surface antigen CD2, T-cell surface antigen T11/Leu-5
Catalog No.:	SM1783RT
Quantity:	25 Tests
Background:	CD2 is a surface antigen of the human T lymphocyte lineage that is expressed on all peripheral blood T cells. It is one of the earliest T cell markers, being present on more than 95% of thymocytes; it is also found on some natural killer cells but not on B lymphocytes. CD2 interacts with lymphocyte function associated antigen (LFA3) and CD48/BCM1 to mediate adhesion between T cells and other cell types. CD2 is implicated in the triggering of T cells, the cytoplasmic domain is implicated in the signaling function. It is useful for the identification of lymphomas and leukaemias of T cell origin.
Uniprot ID:	P06729
NCBI:	9606
Host / Isotype:	Mouse / IgG2b
Clone:	LT2
Immunogen:	Normal human peripheral blood lymphocytes. Spleen cells from immunised BALB/c mice were fused with cells of the mouse X63.653 myeloma cell line.
Format:	State: Lyophilized purified IgG fraction. Purification: Affinity Chromatography on Protein A Buffer System: PBS, pH 7.4 containing 0.09% Sodium Azide as preservative, 1% BSA as stabilizer and Inert Bulking Reagent. Label: PE – R. Phycoerythrin (RPE) Reconstitution: Restore with 1 ml distilled water.
Applications:	Flow Cytometry. Other applications not tested. Optimal dilutions are dependent on conditions and should be determined by the user.
Specificity:	This antibody recognises the CD2 cell surface glycoprotein, a 50kD molecule expressed by T cells, NK cells and thymocytes. Species: Human and Rhesus Monkey. Other species not tested.
Storage:	Prior to and following reconstitution store the antibody undiluted at 2-8°C. DO NOT FREEZE! This product is photosensitive and should be protected from light. Shelf life: one year from despatch.

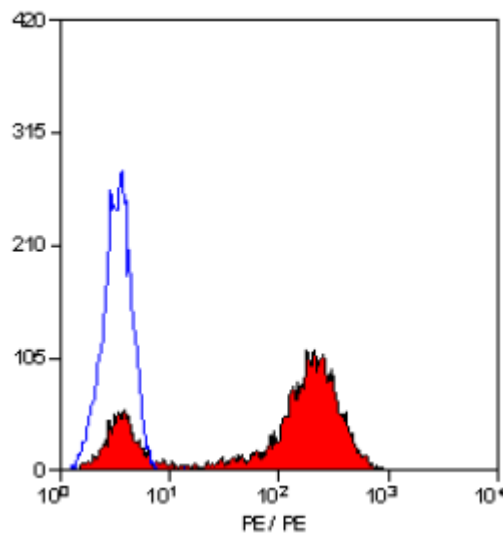
For research and in vitro use only. Not for diagnostic or therapeutic work.

Material Safety Datasheets are available at www.acris-antibodies.com or on request.

Antibody Hotline - Technical Questions - Antibody Location Service
Free Call: 0800-2274746 (Germany only) - www.acris-antibodies.com

- General References:** 1. Moingeon, P. et al. (1989) The structural biology of CD2. Immunol. Rev. 111: 111-144.
2. Beyers, A.D. et al. (1989) Activation of T lymphocytes via monoclonal antibodies against rat cell surface antigens with particular reference to CD2 antigen. Immunol. Rev. 111: 59-77.

Pictures:



Staining of human peripheral blood lymphocytes with Mouse Anti Human CD2-RPE (SM1783R/RT).

For research and in vitro use only. Not for diagnostic or therapeutic work.

Material Safety Datasheets are available at www.acris-antibodies.com or on request.

Antibody Hotline - Technical Questions - Antibody Location Service
Free Call: 0800-2274746 (Germany only) - www.acris-antibodies.com