

## Monoclonal Antibody to CD36 - FITC

<b>Alternate names:</b>	Fatty acid translocase, GP3B, GP4, Glycoprotein IIIb, PAS IV, PAS-4, Platelet collagen receptor, Platelet glycoprotein 4, Platelet glycoprotein IV, Thrombospondin receptor
<b>Catalog No.:</b>	SM1769F
<b>Quantity:</b>	0.1 mg
<b>Concentration:</b>	0.1 mg/ml
<b>Background:</b>	CD36 is an 88kD cell surface glycoprotein expressed by platelets and monocytes/macrophages and also by some microvascular endothelium and erythroid precursors. CD36 is the receptor for thrombospondin. When expressed by monocytes and macrophages, CD36 acts as a receptor for oxidized LDL and for apoptotic polymorphonuclear cells.
<b>Uniprot ID:</b>	<a href="#">P16671</a>
<b>NCBI:</b>	<a href="#">9606</a>
<b>Host / Isotype:</b>	Mouse / IgM
<b>Clone:</b>	SM0
<b>Immunogen:</b>	Human tonsil cells and peripheral blood mononuclear cells. Spleen cells from immunised mice were fused with cells of the NS1 mouse myeloma line.
<b>Format:</b>	<b>State:</b> Liquid purified IgM fraction <b>Purification:</b> Ammonium Sulphate Precipitation. <b>Buffer System:</b> PBS, pH 7.4 containing 0.09% Sodium Azide as preservative and 1% BSA as stabilizer. <b>Label:</b> FITC – Fluorescein Isothiocyanate Isomer 1
<b>Applications:</b>	Flow Cytometry: Use 10 µl of Neat-1/5 diluted antibody to label 10e6 cells in 100 µl. Other applications not tested. Optimal dilutions are dependent on conditions and should be determined by the user.
<b>Specificity:</b>	This antibody recognises the CD36 antigen. This antibody partially inhibits collagen induced platelet aggregation and macrophage ingestion of apoptotic neutrophils. This clone is also reported to block interaction of oxidised low-density lipoprotein (OXLDL) with CD36. We recommend the use of SM1769A for this purpose. <b>Species:</b> Human. Other species not tested.
<b>Storage:</b>	Store the antibody undiluted at 2-8°C. <b>DO NOT FREEZE!</b> This product is photosensitive and should be protected from light. Shelf life: one year from despatch.

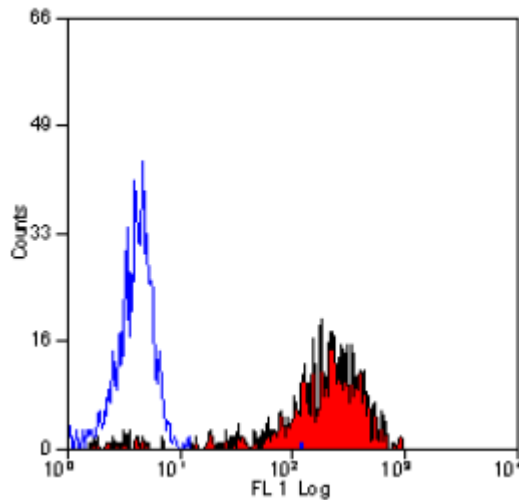
**For research and in vitro use only. Not for diagnostic or therapeutic work.**

Material Safety Datasheets are available at [www.acris-antibodies.com](http://www.acris-antibodies.com) or on request.

Antibody Hotline - Technical Questions - Antibody Location Service  
Free Call: 0800-2274746 (Germany only) - [www.acris-antibodies.com](http://www.acris-antibodies.com)

- General References:**
1. Hogg, N. (1985) Mononuclear phagocytes of normal and rheumatoid synovial membrane identified by monoclonal antibodies. *Immunol.* 56: 673-681.
  2. Greenwalt, D.E. et al. (1992) membrane glycoprotein CD36: a review of its roles in adherence, signal transduction and transfusion medicine. *Blood.* 80: 1105-1115.
  3. Endemann, G. et al. (1993) CD36 is a receptor for oxidized low density lipoprotein. *J. Biol. Chem.* 268: 11811 - 11816.
  4. Sugihara, K. et al. (1992) Thrombospondin mediates adherence of CD36+ sickle reticulocytes to endothelial cells. *Blood* 80: 2634 - 2642.
  5. Hogg, N. et al. (1984) Monoclonal antibodies specific for human monocytes, granulocytes and endothelium. *Immunology.* 53: 753 - 767
  6. Maxeiner, H. et al. (1998) Complementary roles for scavenger receptor A and CD36 of human monocytederived macrophages in adhesion to surfaces coated with oxidized-low density lipoproteins and secretion of H<sub>2</sub>O<sub>2</sub>. *J. Exp. Med.* 188 (12): 2257 - 2265.

**Pictures:**



Staining of human peripheral blood lymphocytes with Mouse Anti Human CD36-FITC (SM1769F/FT).

**For research and in vitro use only. Not for diagnostic or therapeutic work.**

Material Safety Datasheets are available at [www.acris-antibodies.com](http://www.acris-antibodies.com) or on request.

Antibody Hotline - Technical Questions - Antibody Location Service  
Free Call: 0800-2274746 (Germany only) - [www.acris-antibodies.com](http://www.acris-antibodies.com)