

## Monoclonal Antibody to CD8 - FITC

<b>Alternate names:</b>	CD8 alpha chain, CD8A, MAL, T-cell surface glycoprotein CD8 alpha chain, T-lymphocyte differentiation antigen T8/Leu-2
<b>Catalog No.:</b>	SM1746F
<b>Quantity:</b>	100 Tests
<b>Concentration:</b>	0.027 mg/ml
<b>Background:</b>	The CD8 antigen is a cell surface glycoprotein found on most cytotoxic T lymphocytes that mediates efficient cell to cell interactions within the immune system. The CD8 antigen, acting as a coreceptor, and the T cell receptor on the T lymphocyte recognize antigen displayed by an antigen presenting cell (APC) in the context of class I MHC molecules. The functional coreceptor is either a homodimer composed of two alpha chains, or a heterodimer composed of one alpha and one beta chain. Both alpha and beta chains share significant homology to immunoglobulin variable light chains.
<b>Uniprot ID:</b>	<a href="#">P01732</a>
<b>NCBI:</b>	<a href="#">NP_001759</a>
<b>GeneID:</b>	<a href="#">925</a>
<b>Host / Isotype:</b>	Rat / IgG2b
<b>Clone:</b>	YTC 182.20
<b>Immunogen:</b>	Mouse L cells transfected with human CD8 gene. Spleen cells from an immunised DA rat were fused with cells of the rat Y3/Ag.1.2.3 myeloma line.
<b>Format:</b>	<b>State:</b> Liquid purified IgG <b>Buffer System:</b> PBS, pH7.2 containing 0.09% Sodium Azide and 1% Bovine Serum Albumin <b>Label:</b> FITC – Fluorescein Isothiocyanate Isomer 1 (FI)
<b>Applications:</b>	Flow cytometry: use 10 µl of neat antibody to label 10e6 cells or 100 µl whole blood. Other applications not tested. Optimal dilutions are dependent on conditions and should be determined by the user.
<b>Specificity:</b>	This antibody recognises the CD8 cell surface antigen, a 30/32kD glycoprotein expressed by the cytotoxic/suppressor subset of T lymphocytes, and more weakly by NK cells. <b>Species:</b> Human, Cynomolgus monkey, Rhesus Monkey. Other species not tested.
<b>Storage:</b>	Store the antibody undiluted at 2-8°C for one month or (in aliquots) at -20°C for longer. Avoid repeated freezing and thawing. This product is photosensitive and should be protected from light. Shelf life: one year from despatch.
<b>General References:</b>	1. Jonker, M. et al. (1989) Reactivity of mAb specific for human CD markers with Rhesus monkey leucocytes. Leucocyte Typing IV. Oxford University Press p 1058-1063.

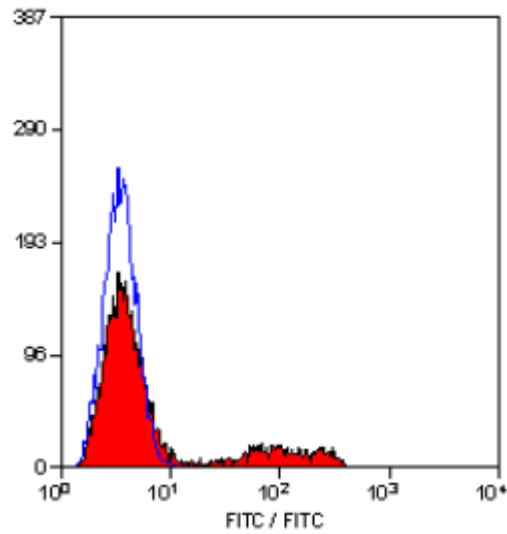
**For research and in vitro use only. Not for diagnostic or therapeutic work.**

Material Safety Datasheets are available at [www.acris-antibodies.com](http://www.acris-antibodies.com) or on request.

Antibody Hotline - Technical Questions - Antibody Location Service  
Free Call: 0800-2274746 (Germany only) - [www.acris-antibodies.com](http://www.acris-antibodies.com)

2. Yoshino, N. et al. (2000) Upgrading of flow cytometric analysis for absolute counts, cytokines and other antigenic molecules of Cynomolgus monkeys (*Macaca fascicularis*) by using anti-human cross-reactive antibodies. *Exp. Anim.* 49: 97-110.

Pictures:



Staining of human peripheral blood lymphocytes with RAT ANTI HUMAN CD8:FITC (SM1746F).

**For research and in vitro use only. Not for diagnostic or therapeutic work.**

Material Safety Datasheets are available at [www.acris-antibodies.com](http://www.acris-antibodies.com) or on request.

Antibody Hotline - Technical Questions - Antibody Location Service  
Free Call: 0800-2274746 (Germany only) - [www.acris-antibodies.com](http://www.acris-antibodies.com)