

Monoclonal Antibody to 6xHistidine Epitope Tag (HHHHHH) - FITC

Catalog No.:	SM1693F
Quantity:	0.1 mg
Concentration:	0.1 mg/ml
Background:	6x-His tags are a type of tag for expressed proteins. This tag is made up of 6 histidine residues attached to either the N- or C-terminal of a protein. Proteins expressed with this type of tag are then traditionally purified using a divalent metal ion column. However, using an antibody specific to this 6x-His tag, the protein can be analyzed for by Western blot or immunofluorescence techniques, thus eliminating the need for a protein-specific antibody. 6x-His tags are particularly effective for the purification of protein expressed in E. coli systems.
Host / Isotype:	Mouse / IgG1
Clone:	AD1.1.10
Immunogen:	PAX6 transcription factor linked to histidine tag. Spleen cells from immunised Balb/c mice were fused with cells of the mouse NS1 myeloma cell line.
Format:	State: Liquid purified IgG fraction Purification: Affinity Chromatography on Protein G Buffer System: PBS, pH 7.4 containing 0.09% Sodium Azide as preservative and 1% BSA as stabilizer Label: FITC – Fluorescein Isothiocyanate Isomer 1
Applications:	Immunofluorescence. Flow Cytometry: Use 10 µl of 1/10 diluted antibody to label 1x10 ⁶ cells in 100 µl. Other applications not tested. Optimal dilutions are dependent on conditions and should be determined by the user.
Specificity:	This antibody recognises proteins containing the motif H-H-H-H-H and is therefore of value in detecting proteins containing histidine tags. The antibody may be used to track the purification of proteins expressed in bacteria, yeast or insect cells. It reacts against all His tagged proteins so far tested. In Western blotting of bacterial extracts the antibody has been shown not to cross-react with any endogenous products, although some cross-reactivity may be seen with extracts of insect or mammalian cells.
Storage:	Store the antibody undiluted at 2-8°C for one month or (in aliquots) at -20°C for longer. This product is photosensitive and should be protected from light. Avoid repeated freezing and thawing. Shelf life: one year from despatch.

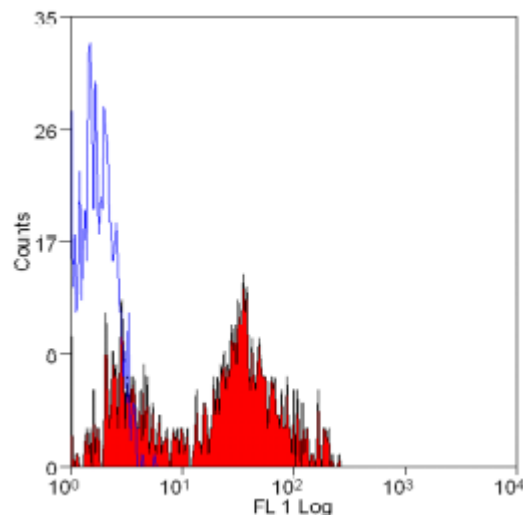
For research and in vitro use only. Not for diagnostic or therapeutic work.

Material Safety Datasheets are available at www.acris-antibodies.com or on request.

Antibody Hotline - Technical Questions - Antibody Location Service
Free Call: 0800-2274746 (Germany only) - www.acris-antibodies.com

- General References:**
1. Conrath, K. et al. (2001) Camel single-domain antibodies as modular building units in bispecific and bivalent antibody constructs. *J. Biol. Chem.* 276: 7346-7350.
 2. Suen, J.L. et al. (2001) Characterization of self-T-cell response and antigenic determinant of U1A protein with bone marrow-derived dendritic cells in NZB x NZW F1 mice. *Immunol.* 103: 301-309.
 3. Hoffmann, S.C. et al. (2007) Identification of CLEC12B, an inhibitory receptor on myeloid cells. *J. Biol. Chem.* 282: 22370-22375.
 4. Zheng, J. et al. (2007) Serum from mice immunized in the context of Treg inhibition identifies DEK as a neuroblastoma tumor antigen. *BMC Immunol.* 8: 4.
 5. Bahi, A. & Dreyer, J.L. (2008) Overexpression of plasminogen activators in the nucleus accumbens enhances cocaine-, amphetamine- and morphine-induced reward and behavioral sensitization. *Genes Brain Behav.* 7: 244-256.
 6. Wrighton, K.H. et al. (2009) Transforming Growth Factor beta can stimulate Smad1 phosphorylation independently of Bone Morphogenic Protein receptors. *J. Biol. Chem.* 284: 9755-9763.
 7. Diefenbacher, M. et al. (2011) The Dsl1 Tethering Complex Actively Participates in Soluble NSF (N-Ethylmaleimide-sensitive Factor) Attachment Protein Receptor (SNARE) Complex Assembly at the Endoplasmic Reticulum in *Saccharomyces cerevisiae*. *J Biol Chem.* 286: 25027-38.
 8. Alvarez, M.M. et al. (2010) Specific recognition of influenza A/H1N1/2009 antibodies in human serum: a simple virus-free ELISA method. *PLoS One.* 5: e10176.
 9. Bahi, A. et al. (2008) The role of tissue-type plasminogen activator system in amphetamine-induced conditional place preference extinction and reinstatement. *Neuropsychopharmacology.* 33: 2726-34.
 10. Gunnarsen, K.S. et al. (2010) Periplasmic expression of soluble single chain T cell receptors is rescued by the chaperone FkpA. *BMC Biotechnol.* 10: 8.
 11. Hwang, H.Y. et al. (2008) Highly specific inhibition of C1q globular-head binding to human IgG: a novel approach to control and regulate the classical complement pathway using an engineered single chain antibody variable fragment. *Mol Immunol.* 45: 2570-80.

Pictures:



Human anti-human CD5 (HuCAL dHLX antibody with HIS tag) staining human peripheral blood lymphocytes, visualised with FITC conjugated Mouse anti-HIS tag antibody (SM1693F).

For research and in vitro use only. Not for diagnostic or therapeutic work.

Material Safety Datasheets are available at www.acris-antibodies.com or on request.

Antibody Hotline - Technical Questions - Antibody Location Service
Free Call: 0800-2274746 (Germany only) - www.acris-antibodies.com