

## Monoclonal Antibody to CD20 - FITC

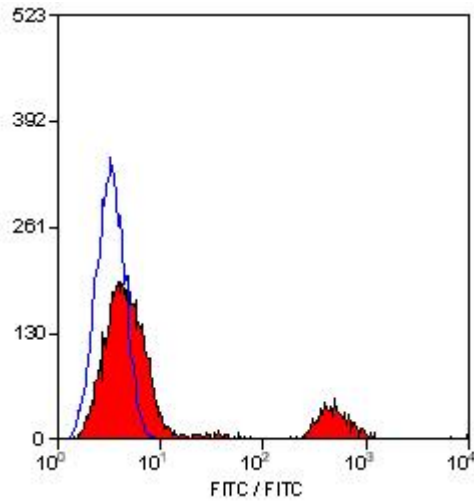
<b>Alternate names:</b>	B-cell marker, B-lymphocyte antigen CD20, B-lymphocyte surface antigen B1, Bp35, Leu-16, MS4A1, Membrane-spanning 4-domains subfamily A member 1
<b>Catalog No.:</b>	SM1676F
<b>Quantity:</b>	0.1 mg
<b>Concentration:</b>	0.1 mg/ml
<b>Background:</b>	CD20 is a 33-37kD phosphoprotein. CD20 is expressed by B lymphocytes and by a small subset of normal circulating T lymphocytes.
<b>Uniprot ID:</b>	<a href="#">P11836</a>
<b>NCBI:</b>	<a href="#">NP_068769.2</a>
<b>GeneID:</b>	<a href="#">931</a>
<b>Host / Isotype:</b>	Mouse / IgG2b
<b>Clone:</b>	2H7
<b>Format:</b>	<b>State:</b> Liquid purified IgG fraction. <b>Purification:</b> Affinity Chromatography on Protein G. <b>Buffer System:</b> PBS, pH 7.4 with 0.09% sodium azide as preservative and 1% BSA as stabilizer <b>Label:</b> FITC – Fluorescein isothiocyanate isomer 1
<b>Applications:</b>	Flow Cytometry: Use 10 µl of neat-1/10 diluted antibody to label 10e6 cells or 100 µl whole blood. Other applications not tested. Optimal dilutions are dependent on conditions and should be determined by the user.
<b>Specificity:</b>	This antibody recognises the human CD20 cell surface antigen. <b>Species:</b> Human and Rhesus Monkey. Other species not tested.
<b>Storage:</b>	Store the antibody undiluted at 2-8°C for one month or (in aliquots) at -20°C for longer. This product is photosensitive and should be protected from light. Avoid repeated freezing and thawing. Shelf life: one year from despatch.
<b>General References:</b>	1. Hultin, L.E. et al. (1993). CD20 (pan B cell) antigen is expressed at a low level on a subpopulation of human T lymphocytes. <i>Cytometry</i> 14: 196 2. Lifson, J. et al. (2001) Role of CD8+ lymphocytes in control of simian Immunodeficiency virus infection and resistance to rechallenge after transient early antiretroviral treatment. <i>J. Virol.</i> 75 (21): 10187-10199

**For research and in vitro use only. Not for diagnostic or therapeutic work.**

Material Safety Datasheets are available at [www.acris-antibodies.com](http://www.acris-antibodies.com) or on request.

Antibody Hotline - Technical Questions - Antibody Location Service  
Free Call: 0800-2274746 (Germany only) - [www.acris-antibodies.com](http://www.acris-antibodies.com)

Pictures:



Staining of human peripheral blood lymphocytes with Mouse anti Human CD20-FITC antibody (SM1676F/FT).

**For research and in vitro use only. Not for diagnostic or therapeutic work.**

Material Safety Datasheets are available at [www.acris-antibodies.com](http://www.acris-antibodies.com) or on request.

Antibody Hotline - Technical Questions - Antibody Location Service  
Free Call: 0800-2274746 (Germany only) - [www.acris-antibodies.com](http://www.acris-antibodies.com)